

Age of Motor Vehicle Population

Department of Transport

September 2004

The average age of all motorized vehicles is 10 years and that of towed vehicles 12 years. The average age of motorcars is 10 years; minibuses 13 years, buses 11 years and trucks 12 years. The average age of caravans is 19 years; heavy trailers 11 years and light trailers 11 years.

On average 16,10% of all motorized vehicles are less than 3 years and 12,21% of all towed vehicles are less than 3 years old. Amongst the separate vehicle types, 24,77% of motorcycles; 15,83% of motorcars; 14,68% of trucks and 14,29% of buses, are less than 3 years old. 4,43% of caravans; 16,50% heavy trailers (>3,5t) and 13,65% light trailers are less than 3 years old.

48,03% of motorcars are older than 10 years; 15,81% older than 20 years and 2,67% older than 30 years. 61,70% of minibuses are older than 10 years; 16,36% older than 20 years and 1,85% older than 30 years. 53,43% of buses are older than 10 years; 25,25% older than 20 years and 3,57% older than 30 years. 44,15% of LDV's (bakkies) are older than 10 years; 15,79% older than 20 years and 2,60% older than 30 years. 55,22% of trucks are older than 10 years; 25,49% older than 20 years and 3,72% older than 30 years.

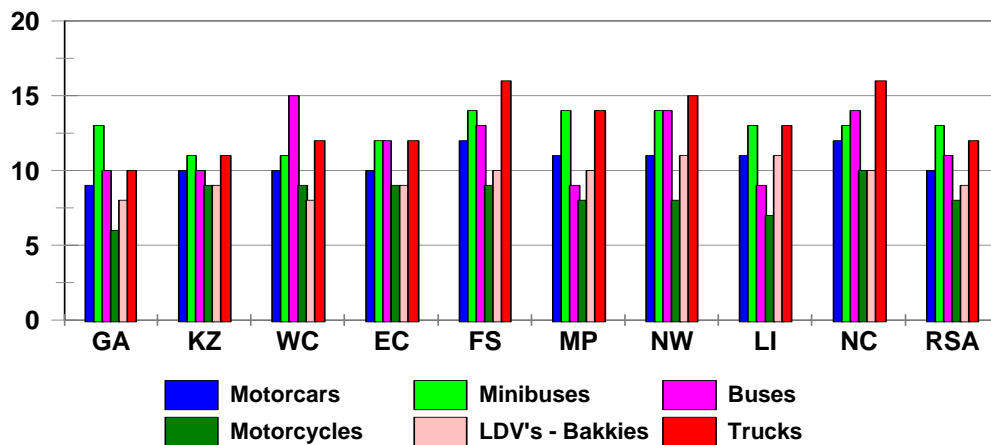
79,42% of caravans are older than 10 years; 46,53% older than 20 years and 8,65% older than 30 years. 52,58% of heavy trailers are older than 10 years; 28,15% older than 20 years and 8,54% older than 30 years. 55,95% of light trailers is older than 10 years; 19,68% older than 20 years and 5,03% older than 30 years.

Additional information is provided in the tables and graphs on the following pages.

Average Age per Vehicle Type per Province (years)										
Vehicle Type	GA	KZ	WC	EC	FS	MP	NW	LI	NC	RSA
Motorcars	9	10	10	10	12	11	11	11	12	10
Minibuses	13	11	11	12	14	14	14	13	13	13
Buses	10	10	15	12	13	9	14	9	14	11
Motorcycles	6	9	9	9	9	8	8	7	10	8
LDV's - Bakkies	8	9	8	9	10	10	11	11	10	9
Trucks	10	11	12	12	16	14	15	13	16	12
Other & Unknown	13	12	11	13	21	17	20	16	13	15
All Motorised Vehicles	9	10	10	10	12	11	12	11	12	10
Caravans	18	18	21	20	20	19	19	19	20	19
Heavy Trailers	10	10	11	10	11	12	15	11	11	11
Light Trailers	10	11	12	12	16	11	11	11	12	11
Unknown	8	10	11	10	11	23	27	20	12	12
All Towed Vehicles	11	11	13	12	15	13	13	13	13	12
All Vehicles	9	10	10	10	12	11	12	11	12	10

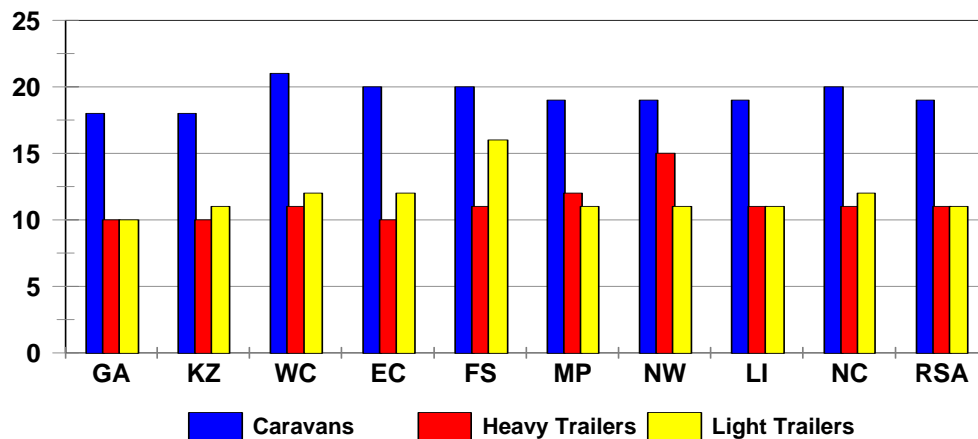
Average Age per Vehicle Type (Years)

Motorised Vehicles



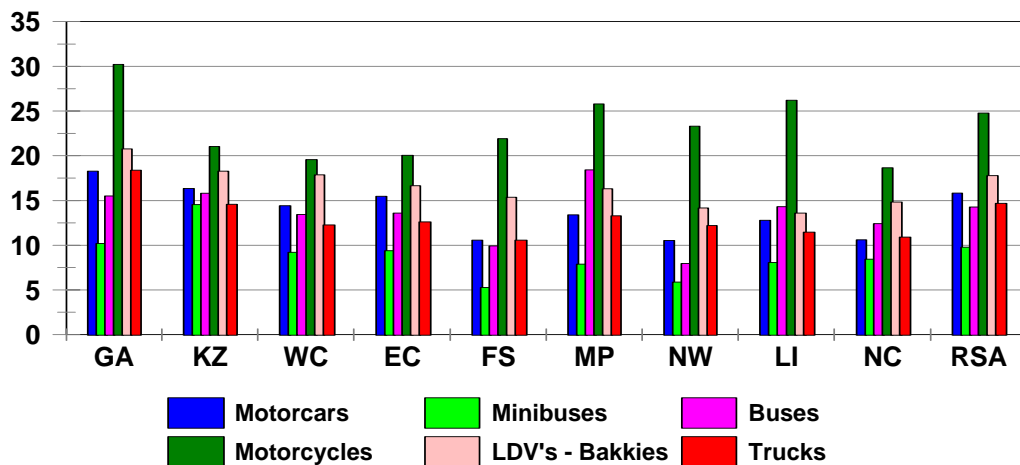
Average Age per Vehicle Type (Years)

Towed Vehicles

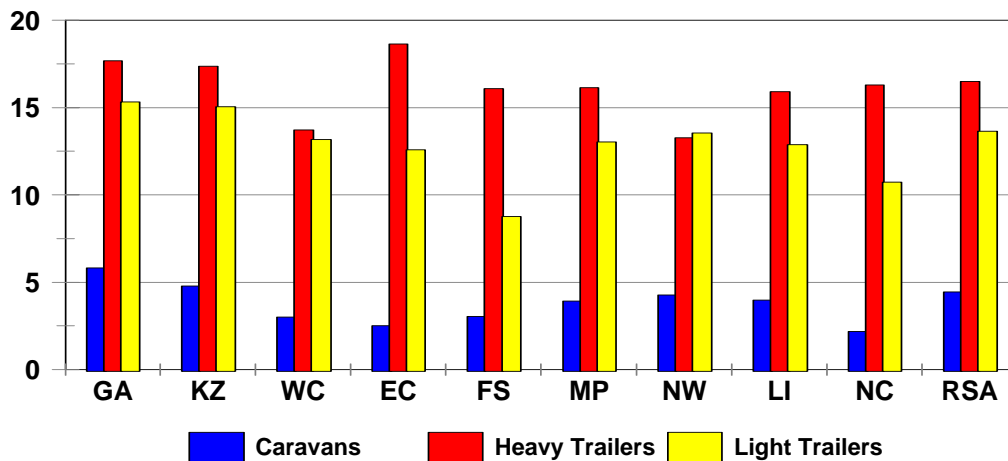


Percent (%) Vehicles Less Than 3 Years Old										
Vehicle Type	GA	KZ	WC	EC	FS	MP	NW	LI	NC	RSA
Motorcars	18.27	16.36	14.40	15.46	10.56	13.39	10.55	12.78	10.61	15.83
Minibuses	10.19	14.53	9.22	9.38	5.28	7.87	5.89	8.05	8.42	9.77
Buses	15.49	15.80	13.41	13.58	9.92	18.41	7.96	14.30	12.41	14.29
Motorcycles	30.21	21.04	19.58	20.06	21.92	25.80	23.30	26.20	18.67	24.77
LDV's - Bakkies	20.75	18.27	17.86	16.65	15.36	16.31	14.19	13.60	14.83	17.76
Trucks	18.37	14.59	12.25	12.60	10.58	13.30	12.20	11.46	10.90	14.68
Other & Unknown	16.51	14.64	13.06	12.32	7.87	10.02	9.98	11.25	10.34	11.65
Motorised Vehicles	18.72	16.70	14.94	15.49	11.67	14.18	11.64	12.98	12.23	16.10
Caravans	5.83	4.78	3.01	2.51	3.04	3.91	4.27	3.98	2.17	4.43
Heavy Trailers	17.66	17.35	13.71	18.63	16.08	16.14	13.27	15.91	16.29	16.50
Light Trailers	15.32	15.04	13.16	12.57	8.76	13.02	13.55	12.87	10.72	13.65
Unknown	5.01	2.77	1.29	1.02	0.47	0.47	1.56	1.64	2.04	1.88
Towed Vehicles	13.97	13.95	11.29	11.46	8.46	11.16	11.03	11.17	9.98	12.21
All Vehicles	18.23	16.47	14.58	15.09	11.15	13.76	11.55	12.79	11.86	15.68

**% Vehicles less than 3 Years old
Motorised Vehicles**



**% Vehicles less than 3 Years old
Towed Vehicles**

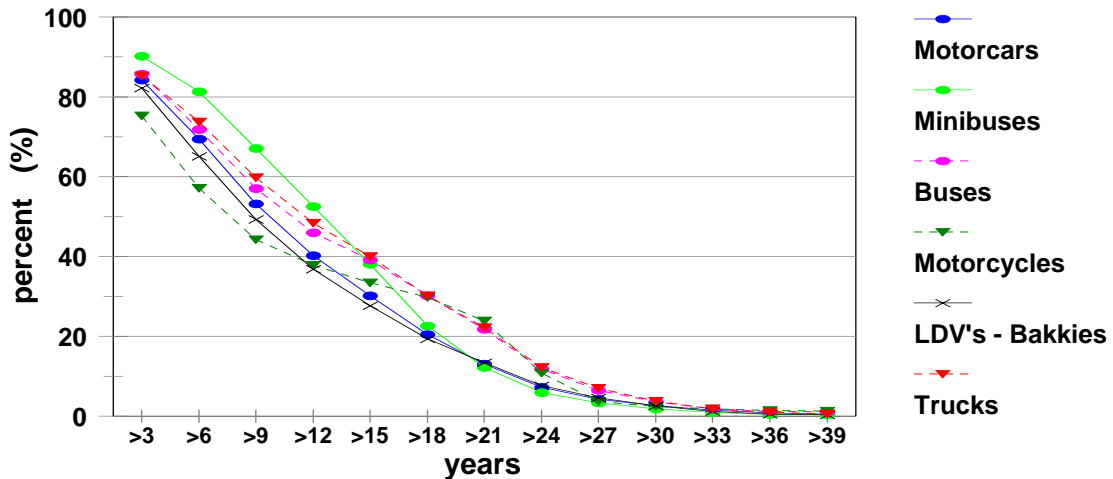


% of Motorised Vehicles Older Than										
Motorcars	% of Motorcars Older Than (Years)									
Older than	GA	KZ	WC	EC	FS	MP	NW	LI	NC	RSA
>10	43.66	47.73	49.23	51.67	57.81	51.91	56.11	54.67	57.64	48.03
>15	27.16	29.25	30.34	31.84	38.49	33.69	36.60	36.74	38.77	30.15
>20	14.45	13.65	15.13	15.77	22.82	18.64	20.82	20.72	23.45	15.81
>25	5.33	4.92	5.72	5.72	9.27	6.71	7.91	7.21	9.46	5.88
>30	2.34	2.54	2.83	2.75	4.10	2.73	3.14	2.75	4.06	2.67
>35	0.78	1.26	1.07	1.08	1.33	0.82	0.94	0.78	1.28	0.96
>40	0.32	0.90	0.49	0.53	0.57	0.35	0.39	0.33	0.57	0.47
Minibuses	% of Minibuses Older Than (Years)									
Older than	GA	KZ	WC	EC	FS	MP	NW	LI	NC	RSA
>10	63.56	53.54	55.42	59.45	70.73	65.54	71.86	64.19	63.50	61.70
>15	40.95	30.02	32.67	29.61	46.68	43.21	46.32	40.93	41.21	38.09
>20	18.18	10.86	14.59	9.52	21.86	19.46	21.36	16.88	20.48	16.36
>25	4.88	3.73	4.73	2.29	6.06	5.02	6.02	4.17	6.42	4.61
>30	1.79	2.51	2.03	0.88	1.89	1.74	1.96	1.21	2.34	1.85
>35	0.31	1.87	0.34	0.27	0.34	0.29	0.29	0.21	0.31	0.54
>40	0.11	1.79	0.09	0.16	0.09	0.08	0.10	0.04	0.09	0.35
Buses	% of Buses Older Than (Years)									
Older than	GA	KZ	WC	EC	FS	MP	NW	LI	NC	RSA
>10	49.78	51.13	59.82	56.02	55.76	47.35	67.18	46.67	60.09	53.43
>15	36.89	29.54	49.74	41.64	47.50	37.28	46.75	32.57	48.43	39.12
>20	22.90	20.00	36.28	26.14	32.58	21.90	25.51	21.01	35.72	25.25
>25	7.24	8.58	14.22	7.99	14.85	7.41	9.55	7.54	16.74	9.30
>30	2.70	4.23	5.94	3.78	5.30	2.23	2.52	2.50	4.63	3.57
>35	1.05	3.08	0.78	1.44	1.36	0.46	0.73	0.34	0.60	1.25
>40	0.90	3.01	0.52	1.22	0.61	0.29	0.41	0.15	0.00	1.03
Motorcycles	% of Motorcycles Older Than (Years)									
Older than	GA	KZ	WC	EC	FS	MP	NW	LI	NC	RSA
>10	35.11	46.86	46.49	48.52	47.87	40.61	43.45	39.02	49.96	41.75
>15	28.69	37.21	35.95	39.07	38.29	32.44	35.10	30.86	41.71	33.42
>20	23.34	30.27	27.53	31.78	29.95	25.33	27.32	23.75	33.92	26.59
>25	5.68	8.67	6.74	6.96	6.20	4.65	5.35	3.90	5.63	6.21
>30	2.15	4.83	2.51	2.46	1.88	1.33	1.79	1.23	1.44	2.41
>35	1.39	3.93	1.44	1.65	1.03	0.73	1.08	0.71	0.79	1.59
>40	0.96	3.46	1.00	1.16	0.61	0.43	0.64	0.51	0.60	1.17
LDV's	% of LDV's (bakkies) Older Than (Years)									
Older than	GA	KZ	WC	EC	FS	MP	NW	LI	NC	RSA
>10	39.25	42.37	41.70	45.32	50.93	48.21	51.74	51.68	50.29	44.15
>15	24.72	23.81	25.17	26.00	36.17	31.95	34.17	33.41	34.67	27.65
>20	14.73	11.31	13.86	12.47	23.30	19.34	20.84	19.42	21.45	15.79
>25	5.65	3.96	5.45	4.25	11.42	8.22	9.16	7.62	10.07	6.34
>30	2.27	1.91	2.25	1.63	4.84	3.46	3.60	2.99	3.80	2.60
>35	0.40	0.91	0.52	0.39	1.10	0.63	0.74	0.52	0.92	0.60
>40	0.13	0.79	0.23	0.19	0.36	0.18	0.20	0.13	0.35	0.27
Trucks	% of Trucks Older Than (Years)									
Older than	GA	KZ	WC	EC	FS	MP	NW	LI	NC	RSA
>10	47.88	54.92	57.94	57.74	63.82	60.89	63.64	59.96	66.86	55.22
>15	33.70	36.43	42.59	39.34	51.91	46.85	49.85	44.11	53.70	40.02
>20	19.77	20.68	27.74	23.98	38.94	31.98	35.92	27.99	41.28	25.49
>25	6.45	6.91	11.00	8.54	19.73	12.43	15.98	9.82	18.68	9.71
>30	2.33	3.17	4.34	2.78	7.88	4.62	6.37	3.47	6.41	3.72
>35	0.51	1.96	1.25	0.79	2.09	0.87	1.82	0.68	1.45	1.10
>40	0.17	1.83	0.41	0.33	0.40	0.18	0.32	0.19	0.36	0.51

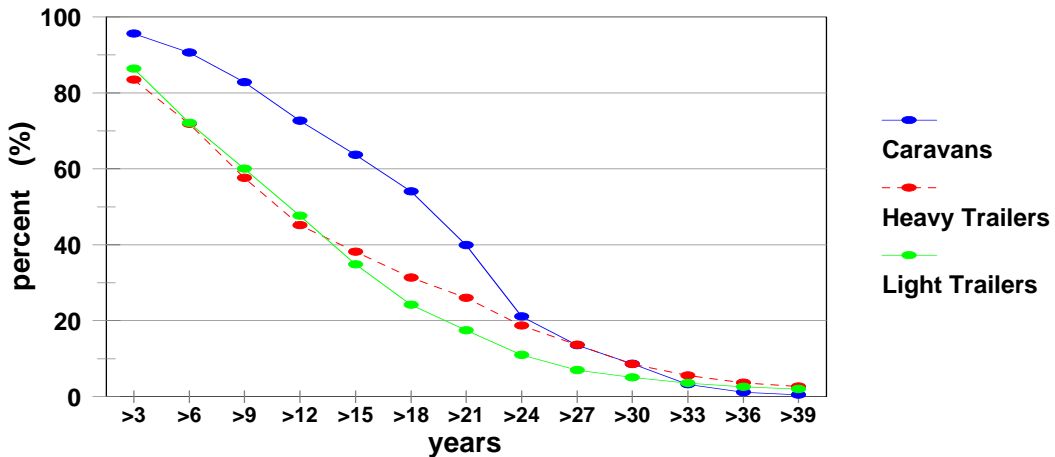
% of Towed Vehicles Older Than										
Caravans	% of Caravans Older Than (Years)									
Older than	GA	KZ	WC	EC	FS	MP	NW	LI	NC	RSA
>10	75.65	78.13	85.54	83.55	83.01	78.95	81.26	79.90	80.49	79.42
>15	59.02	58.83	72.27	70.11	68.05	63.45	65.60	64.53	66.39	63.71
>20	42.22	41.55	54.84	52.57	50.24	44.20	48.26	48.41	53.15	46.53
>25	15.01	15.02	22.50	19.93	20.57	15.33	18.62	19.20	22.96	17.59
>30	7.20	6.76	11.87	10.06	10.16	7.00	9.13	9.66	12.16	8.65
>35	1.28	1.66	2.31	1.91	2.03	1.02	1.78	1.75	2.27	1.63
>40	0.29	0.77	0.49	0.35	0.53	0.19	0.38	0.40	0.33	0.39
Heavy Trailers	% of Heavy Trailers (>3,5t) Older Than (Years)									
Older than	GA	KZ	WC	EC	FS	MP	NW	LI	NC	RSA
>10	50.45	50.66	52.87	48.93	53.02	56.80	62.38	55.51	51.91	52.58
>15	35.65	35.96	37.02	33.71	40.59	44.33	49.85	39.71	35.38	38.15
>20	25.93	25.59	26.44	24.24	31.01	34.47	39.92	28.65	25.43	28.15
>25	13.52	15.29	15.60	13.54	19.21	20.85	26.93	16.70	13.11	16.34
>30	5.82	8.54	6.96	4.62	10.10	13.51	18.20	10.27	6.10	8.54
>35	2.20	4.88	2.56	1.57	4.43	6.94	11.43	5.47	2.65	4.14
>40	0.84	3.75	1.25	0.67	2.36	3.10	7.39	2.99	1.25	2.33
Light Trailers	% of Light Trailers (<3,5t) Older Than (Years)									
Older than	GA	KZ	WC	EC	FS	MP	NW	LI	NC	RSA
>10	52.15	54.60	57.07	56.52	69.14	56.35	55.72	55.69	60.90	55.95
>15	29.64	35.21	36.44	35.62	52.87	32.61	34.83	33.95	39.71	34.79
>20	14.79	22.90	20.65	20.21	36.54	16.25	19.43	19.17	23.61	19.68
>25	5.43	13.24	8.68	8.77	23.32	6.15	8.81	8.06	9.43	9.02
>30	2.37	9.30	4.29	4.47	16.46	2.89	4.56	3.97	3.94	5.03
>35	0.97	7.34	1.86	2.09	10.61	1.21	2.26	2.35	1.68	2.84
>40	0.41	6.55	0.79	0.95	7.31	0.57	1.21	1.67	0.87	1.83

RSA Vehicle Type	Percent (%) of Vehicles Older Than (Years)													September 2004
	>3	>6	>9	>12	>15	>18	>21	>24	>27	>30	>33	>36	>39	
Motorcars	84.17	69.37	53.17	40.20	30.15	20.49	13.06	7.22	4.25	2.67	1.46	0.80	0.52	
Minibuses	90.23	81.26	67.08	52.51	38.09	22.65	12.23	5.92	3.34	1.85	0.95	0.42	0.36	
Buses	85.71	71.80	57.04	45.99	39.12	30.20	21.75	11.83	6.47	3.57	1.82	1.16	1.06	
Motorcycles	75.23	57.12	44.22	37.85	33.42	29.80	23.84	10.83	3.63	2.41	1.86	1.44	1.23	
LDV's - Bakkies	82.24	65.09	49.28	36.79	27.65	19.39	13.38	7.64	4.61	2.60	1.17	0.48	0.30	
Trucks	85.32	73.73	59.78	48.41	40.02	30.21	22.17	12.21	6.97	3.72	1.80	0.89	0.56	
Other & Unknown	88.35	80.74	67.97	56.72	50.87	43.39	36.81	26.34	18.70	12.27	7.60	4.35	2.73	
Motorised Vehicles	83.90	69.02	53.25	40.60	30.93	21.57	14.38	8.07	4.77	2.91	1.56	0.83	0.55	
Caravans	95.57	90.57	82.77	72.67	63.71	53.99	39.87	21.14	13.58	8.65	3.21	1.15	0.53	
Heavy Trailers	83.50	71.81	57.63	45.12	38.15	31.30	26.05	18.68	13.62	8.54	5.58	3.64	2.62	
Light Trailers	86.35	72.07	60.00	47.61	34.79	24.18	17.47	10.98	7.00	5.03	3.55	2.58	1.98	
Unknown	98.12	96.45	69.59	47.80	43.55	38.34	33.40	26.78	21.42	16.84	12.88	9.83	7.25	
Towed Vehicles	87.79	75.72	63.21	50.65	39.55	29.83	22.41	14.16	9.48	6.57	4.24	2.89	2.13	
All Vehicles	84.32	69.75	54.33	41.70	31.86	22.47	15.25	8.73	5.28	3.31	1.85	1.05	0.72	

**% Motorised Vehicles Older Than ...
RSA**



**% Towed Vehicles Older Than ...
RSA**



Gauteng		Percent (%) of Vehicles Older Than (Years)											September 2004	
Vehicle Type	>3	>6	>9	>12	>15	>18	>21	>24	>27	>30	>33	>36	>39	
Motorcars	81.73	65.20	48.75	36.30	27.16	18.48	12.07	6.64	3.76	2.34	1.23	0.62	0.37	
Minibuses	89.81	80.63	68.31	55.29	40.95	25.05	13.76	6.39	3.41	1.79	0.80	0.19	0.11	
Buses	84.51	69.50	53.27	43.31	36.89	28.41	19.16	9.80	4.66	2.70	1.41	0.97	0.91	
Motorcycles	69.79	50.27	37.36	32.07	28.69	26.04	20.99	9.88	3.31	2.15	1.67	1.23	1.02	
LDV's - Bakkies	79.25	59.57	44.12	32.69	24.72	17.73	12.54	6.87	4.07	2.27	0.95	0.29	0.15	
Trucks	81.63	67.35	52.55	42.02	33.70	24.02	16.69	8.41	4.50	2.33	0.98	0.36	0.21	
Other & Unknown	83.49	75.35	62.72	51.87	44.29	35.61	29.09	20.03	14.40	9.93	6.48	4.16	3.05	
Motorised Vehicles	81.28	64.52	48.58	36.57	27.65	19.14	12.77	6.94	3.91	2.36	1.21	0.58	0.36	
Caravans	94.17	87.93	79.43	68.60	59.02	49.17	36.08	18.52	11.40	7.20	2.63	0.85	0.37	
Heavy Trailers	82.34	70.09	55.40	43.22	35.65	28.62	23.87	16.30	10.39	5.82	3.43	1.77	1.08	
Light Trailers	84.68	69.12	56.66	43.14	29.64	18.90	12.84	7.12	3.79	2.37	1.42	0.81	0.48	
Unknown	94.99	92.86	41.30	28.27	23.32	18.93	14.89	9.66	6.80	4.94	3.55	2.39	1.63	
Towed Vehicles	86.03	72.52	59.55	46.59	34.54	24.50	17.60	9.93	5.75	3.54	1.88	0.96	0.56	
All Vehicles	81.77	65.35	49.72	37.61	28.37	19.70	13.27	7.25	4.10	2.49	1.28	0.62	0.38	

KwaZuluNatal		Percent (%) of Vehicles Older Than (Years)											September 2004	
Vehicle Type	>3	>6	>9	>12	>15	>18	>21	>24	>27	>30	>33	>36	>39	
Motorcars	83.64	69.03	53.01	39.78	29.25	18.70	10.85	5.95	3.74	2.54	1.62	1.14	0.94	
Minibuses	85.47	74.43	59.12	43.08	30.02	16.16	7.65	4.40	3.19	2.51	2.04	1.82	1.79	
Buses	84.20	68.79	55.98	35.46	29.54	23.41	16.47	9.99	6.07	4.23	3.32	3.06	3.01	
Motorcycles	78.96	62.60	50.09	42.17	37.21	33.61	27.42	13.28	6.11	4.83	4.20	3.75	3.54	
LDV's - Bakkies	81.73	64.44	48.08	33.86	23.81	14.95	9.10	4.82	2.99	1.91	1.15	0.86	0.80	
Trucks	85.41	74.51	60.17	45.32	36.43	25.73	17.46	8.95	4.98	3.17	2.21	1.90	1.85	
Other & Unknown	85.36	75.80	61.52	48.66	41.87	33.20	26.76	18.53	13.17	8.59	5.18	3.65	2.79	
Motorised Vehicles	83.30	68.47	52.60	39.06	28.84	18.76	11.39	6.27	3.91	2.64	1.71	1.27	1.09	
Caravans	95.22	89.58	81.84	69.52	58.83	49.06	35.65	17.93	11.39	6.76	2.60	1.38	0.90	
Heavy Trailers	82.65	69.29	55.73	43.14	35.96	29.12	23.59	16.88	12.85	8.54	5.68	4.60	3.92	
Light Trailers	84.96	69.94	58.23	46.36	35.21	26.69	20.94	14.92	11.28	9.30	7.91	7.17	6.65	
Unknown	97.23	95.32	60.22	24.80	20.92	17.55	13.51	9.18	6.21	4.38	3.39	2.75	2.57	
Towed Vehicles	86.05	73.01	60.15	46.95	37.13	29.12	22.72	15.42	11.42	8.63	6.62	5.76	5.22	
All Vehicles	83.53	68.85	53.23	39.71	29.53	19.62	12.34	7.03	4.54	3.14	2.12	1.64	1.44	

Western Cape		Percent (%) of Vehicles Older Than (Years)											September 2004	
Vehicle Type	>3	>6	>9	>12	>15	>18	>21	>24	>27	>30	>33	>36	>39	
Motorcars	85.60	71.14	54.43	41.18	30.34	20.27	12.26	6.86	4.33	2.83	1.61	0.87	0.56	
Minibuses	90.78	79.70	61.89	46.38	32.67	19.49	10.83	5.77	3.60	2.03	0.85	0.20	0.11	
Buses	86.59	75.94	62.73	55.00	49.74	40.76	32.55	18.70	10.13	5.94	2.66	0.68	0.55	
Motorcycles	80.42	62.02	48.85	41.76	35.95	31.01	24.77	11.37	3.98	2.51	1.77	1.30	1.05	
LDV's - Bakkies	82.14	64.60	47.12	34.41	25.17	17.23	11.58	6.49	4.01	2.25	0.96	0.42	0.26	
Trucks	87.75	76.40	62.66	51.62	42.59	32.45	24.31	13.42	8.13	4.34	2.14	0.99	0.51	
Other & Unknown	86.94	78.03	62.41	47.40	40.40	33.45	25.65	17.72	12.64	8.12	4.71	2.64	1.63	
Motorised Vehicles	85.06	70.25	53.59	40.59	30.26	20.71	13.17	7.36	4.55	2.86	1.56	0.82	0.53	
Caravans	96.99	93.90	88.01	80.58	72.27	63.02	47.50	26.14	17.96	11.87	4.31	1.65	0.75	
Heavy Trailers	86.29	75.06	59.17	44.60	37.02	30.09	24.11	17.36	13.40	6.96	4.17	2.19	1.48	
Light Trailers	86.84	73.39	61.05	49.30	36.44	25.62	18.01	10.88	6.48	4.29	2.64	1.56	0.97	
Unknown	98.71	97.70	71.11	40.59	36.23	32.61	26.66	18.45	12.51	8.70	5.70	3.42	2.42	
Towed Vehicles	88.71	77.46	64.98	52.64	41.32	31.43	22.99	13.93	8.99	5.79	3.16	1.72	1.06	
All Vehicles	85.42	70.96	54.71	41.78	31.35	21.76	14.13	8.01	4.99	3.15	1.72	0.91	0.58	

Eastern Cape	Percent (%) of Vehicles Older Than (Years)												September 2004
Vehicle Type	>3	>6	>9	>12	>15	>18	>21	>24	>27	>30	>33	>36	>39
Motorcars	84.54	71.94	56.60	43.24	31.84	21.19	12.63	6.86	4.27	2.75	1.58	0.89	0.59
Minibuses	90.62	82.57	65.84	47.43	29.61	14.53	6.44	3.00	1.58	0.88	0.44	0.21	0.18
Buses	86.42	76.46	58.47	49.09	41.64	33.65	22.04	10.28	6.07	3.78	1.92	1.28	1.22
Motorcycles	79.94	62.32	50.74	44.27	39.07	35.31	28.37	12.58	3.68	2.46	1.95	1.45	1.22
LDV's - Bakkies	83.35	66.36	50.61	36.79	26.00	16.61	9.94	5.17	3.00	1.63	0.71	0.33	0.21
Trucks	87.40	77.74	62.53	49.26	39.34	29.17	20.40	10.91	5.68	2.78	1.32	0.62	0.35
Other & Unknown	87.68	79.90	64.52	52.87	46.45	38.70	29.52	20.84	14.72	9.97	6.35	4.05	2.63
Motorised Vehicles	84.51	70.96	55.54	42.08	30.92	20.70	12.70	6.82	4.06	2.50	1.39	0.78	0.52
Caravans	97.49	94.31	85.97	78.01	70.11	60.19	45.27	23.79	15.46	10.06	3.87	1.20	0.56
Heavy Trailers	81.37	70.88	54.56	40.49	33.71	26.67	22.21	15.41	12.15	4.62	2.64	1.26	0.85
Light Trailers	87.43	73.33	60.39	48.13	35.62	25.14	17.69	10.74	6.71	4.47	2.88	1.81	1.17
Unknown	98.98	95.92	61.46	37.05	32.39	28.28	24.02	17.69	13.50	9.75	6.73	4.66	3.02
Towed Vehicles	88.54	76.84	62.84	50.21	39.42	29.79	21.99	13.31	8.84	5.46	3.18	1.83	1.16
All Vehicles	84.91	71.54	56.26	42.88	31.76	21.60	13.62	7.46	4.53	2.79	1.56	0.88	0.58

Free State	Percent (%) of Vehicles Older Than (Years)												September 2004
Vehicle Type	>3	>6	>9	>12	>15	>18	>21	>24	>27	>30	>33	>36	>39
Motorcars	89.44	78.19	63.09	48.68	38.49	28.16	19.54	11.23	6.76	4.10	2.11	1.07	0.65
Minibuses	94.72	89.12	76.65	60.48	46.68	29.84	16.60	7.92	4.32	1.89	0.89	0.18	0.10
Buses	90.08	74.62	59.02	51.67	47.50	37.80	29.70	18.26	11.97	5.30	2.12	1.14	0.91
Motorcycles	78.08	62.54	50.39	43.25	38.29	33.86	26.65	11.55	3.18	1.88	1.29	0.94	0.71
LDV's - Bakkies	84.64	70.41	55.80	44.02	36.17	27.41	20.66	13.42	8.47	4.84	2.31	0.83	0.42
Trucks	89.42	80.73	68.17	58.10	51.91	43.42	35.93	23.36	15.02	7.88	3.84	1.53	0.56
Other & Unknown	92.13	86.91	76.02	66.16	62.81	55.56	49.73	36.83	27.45	18.24	11.66	6.34	3.82
Motorised Vehicles	88.33	77.07	62.78	49.83	41.11	31.53	23.59	14.66	9.33	5.66	3.09	1.51	0.89
Caravans	96.96	92.86	86.18	75.66	68.05	58.31	43.33	24.49	15.75	10.16	4.01	1.64	0.80
Heavy Trailers	83.92	71.38	57.97	45.84	40.59	34.37	29.05	21.73	15.80	10.10	6.49	3.66	2.69
Light Trailers	91.24	81.14	71.66	63.74	52.87	41.98	33.91	25.95	20.27	16.46	12.70	9.88	7.87
Unknown	99.53	99.15	75.55	27.88	24.50	21.09	18.48	15.26	12.70	10.57	7.84	5.66	3.69
Towed Vehicles	91.54	82.56	71.74	59.78	50.66	41.16	33.10	24.34	18.52	14.37	10.44	7.72	6.00
All Vehicles	88.85	77.96	64.23	51.45	42.66	33.09	25.13	16.23	10.82	7.08	4.28	2.52	1.71

Mpumalanga	Percent (%) of Vehicles Older Than (Years)												September 2004
Vehicle Type	>3	>6	>9	>12	>15	>18	>21	>24	>27	>30	>33	>36	>39
Motorcars	86.61	72.99	56.96	43.99	33.69	23.50	15.60	8.44	4.62	2.73	1.35	0.66	0.40
Minibuses	92.13	84.42	70.45	57.06	43.21	26.20	14.56	6.68	3.57	1.74	0.73	0.13	0.08
Buses	81.59	65.12	49.12	44.14	37.28	27.00	18.70	10.24	5.22	2.23	0.76	0.42	0.34
Motorcycles	74.20	57.53	43.63	36.67	32.44	28.83	22.40	8.89	2.25	1.33	0.87	0.62	0.47
LDV's - Bakkies	83.69	67.92	53.08	41.11	31.95	23.41	16.64	9.89	6.05	3.46	1.49	0.47	0.21
Trucks	86.70	76.26	64.66	54.50	46.85	37.02	28.22	15.77	8.74	4.62	1.79	0.59	0.26
Other & Unknown	89.98	82.31	71.35	60.79	54.36	46.78	39.04	27.07	18.53	12.44	7.22	3.54	2.05
Motorised Vehicles	85.82	72.19	57.12	44.89	35.28	25.61	17.88	10.13	5.85	3.45	1.67	0.73	0.41
Caravans	96.09	90.71	82.87	71.77	63.45	52.84	36.92	18.76	11.59	7.00	2.40	0.74	0.25
Heavy Trailers	83.86	73.25	60.84	50.11	44.33	38.06	32.07	23.64	18.03	13.51	9.20	6.33	3.74
Light Trailers	86.98	72.96	60.84	47.19	32.61	20.97	14.15	7.92	4.34	2.89	1.78	1.03	0.62
Unknown	99.53	98.53	86.44	79.60	75.06	65.79	55.97	46.64	38.60	31.83	24.71	19.51	14.97
Towed Vehicles	88.84	77.65	66.13	53.84	42.35	31.88	23.59	15.00	10.21	7.41	4.81	3.25	2.17
All Vehicles	86.24	72.95	58.38	46.14	36.27	26.49	18.68	10.81	6.46	4.01	2.11	1.08	0.66

North West	Percent (%) of Vehicles Older Than (Years)												September 2004
Vehicle Type	>3	>6	>9	>12	>15	>18	>21	>24	>27	>30	>33	>36	>39
Motorcars	89.45	77.44	61.51	47.39	36.60	25.97	17.58	9.83	5.45	3.14	1.54	0.75	0.46
Minibuses	94.11	88.56	76.78	62.39	46.32	28.83	16.58	7.83	4.10	1.96	0.86	0.17	0.10
Buses	92.04	84.81	73.92	58.29	46.75	30.91	22.62	10.93	5.77	2.52	0.97	0.61	0.45
Motorcycles	76.70	59.53	45.71	39.37	35.10	30.70	24.54	10.54	2.96	1.79	1.31	0.91	0.70
LDV's - Bakkies	85.81	71.58	56.70	44.15	34.17	24.88	18.19	11.00	6.55	3.60	1.56	0.55	0.24
Trucks	87.80	79.11	67.43	57.73	49.85	40.89	32.33	19.85	11.79	6.37	2.94	1.41	0.40
Other & Unknown	90.02	84.36	72.92	64.40	59.01	52.80	48.42	35.32	23.31	13.97	8.63	4.49	2.45
Motorised Vehicles	88.36	76.49	61.57	48.56	38.33	28.19	20.37	12.03	6.97	3.96	1.99	0.92	0.50
Caravans	95.73	91.42	84.43	74.26	65.60	55.82	41.13	22.23	14.46	9.13	3.40	1.24	0.48
Heavy Trailers	86.73	78.09	66.62	55.80	49.85	43.00	38.05	29.57	24.27	18.20	13.59	10.20	7.96
Light Trailers	86.45	71.78	59.64	47.42	34.83	24.06	17.40	10.84	6.60	4.56	2.96	1.94	1.28
Unknown	98.44	96.33	84.53	78.64	75.22	69.23	65.92	57.08	49.06	38.82	31.05	24.27	18.31
Towed Vehicles	88.97	77.76	66.43	55.33	45.07	35.43	28.27	19.58	14.33	10.49	7.30	5.23	3.80
All Vehicles	88.45	76.66	62.23	49.47	39.24	29.16	21.43	13.05	7.97	4.84	2.71	1.50	0.95

Limpopo	Percent (%) of Vehicles Older Than (Years)												September 2004
Vehicle Type	>3	>6	>9	>12	>15	>18	>21	>24	>27	>30	>33	>36	>39
Motorcars	87.22	74.94	59.49	47.33	36.74	25.94	17.33	9.17	4.86	2.75	1.34	0.62	0.36
Minibuses	91.95	84.64	69.62	55.76	40.93	23.61	12.81	5.51	2.66	1.21	0.48	0.09	0.04
Buses	85.70	65.67	49.51	41.67	32.57	25.17	18.32	9.35	5.53	2.50	0.69	0.24	0.15
Motorcycles	73.80	56.86	42.13	35.33	30.86	27.09	20.62	8.29	1.92	1.23	0.82	0.66	0.57
LDV's - Bakkies	86.40	72.87	56.70	43.99	33.41	23.74	16.46	9.37	5.42	2.99	1.26	0.37	0.16
Trucks	88.54	78.82	63.96	53.09	44.11	33.80	24.09	12.50	6.66	3.47	1.39	0.48	0.23
Other & Unknown	88.75	79.32	66.90	57.60	52.04	44.87	38.77	28.43	20.41	14.28	9.15	5.45	3.08
Motorised Vehicles	87.02	74.61	59.05	46.87	36.42	25.97	17.82	9.80	5.47	3.13	1.50	0.64	0.35
Caravans	96.02	91.22	83.37	72.76	64.53	55.21	41.61	22.90	15.05	9.66	3.87	1.24	0.59
Heavy Trailers	84.09	74.68	60.38	47.31	39.71	31.64	26.77	19.09	14.37	10.27	7.28	4.93	3.42
Light Trailers	87.13	73.05	60.11	46.69	33.95	23.13	16.87	10.08	5.93	3.97	2.83	2.17	1.78
Unknown	98.36	95.77	79.56	71.00	65.28	55.66	48.67	42.73	33.84	27.50	21.93	18.72	13.04
Towed Vehicles	88.83	77.57	64.89	52.29	41.42	31.27	24.14	15.66	10.54	7.47	5.10	3.73	2.73
All Vehicles	87.21	74.93	59.67	47.45	36.95	26.53	18.49	10.42	6.01	3.59	1.88	0.97	0.60

Northern Cape	Percent (%) of Vehicles Older Than (Years)												September 2004
Vehicle Type	>3	>6	>9	>12	>15	>18	>21	>24	>27	>30	>33	>36	>39
Motorcars	89.39	77.51	62.62	49.31	38.77	28.69	19.97	11.48	6.82	4.06	2.09	1.05	0.66
Minibuses	91.58	84.26	69.30	55.02	41.21	27.24	15.55	8.39	4.80	2.34	0.94	0.19	0.12
Buses	87.59	74.74	62.18	56.50	48.43	39.31	31.54	19.88	11.96	4.63	1.79	0.30	0.00
Motorcycles	81.33	63.28	52.02	46.22	41.71	38.01	29.63	11.83	2.70	1.44	0.99	0.74	0.64
LDV's - Bakkies	85.17	70.54	55.42	43.09	34.67	25.58	18.95	11.96	7.43	3.80	1.74	0.75	0.41
Trucks	89.10	81.88	70.49	60.08	53.70	45.61	37.81	23.07	13.43	6.41	2.90	1.04	0.44
Other & Unknown	89.66	78.83	65.02	51.47	46.22	39.50	31.51	22.71	15.98	10.59	6.35	4.02	2.38
Motorised Vehicles	87.77	75.16	60.51	47.90	38.60	29.19	21.19	12.63	7.57	4.24	2.12	1.04	0.62
Caravans	97.83	94.78	82.36	74.93	66.39	58.97	46.16	26.68	18.40	12.16	4.40	1.45	0.53
Heavy Trailers	83.71	73.28	57.37	43.15	35.38	29.09	22.81	15.89	10.19	6.10	3.78	2.17	1.40
Light Trailers	89.28	76.30	64.66	52.08	39.71	28.77	21.07	12.44	6.51	3.94	2.35	1.53	0.98
Unknown	97.96	94.72	65.69	48.19	44.04	39.67	35.44	25.26	17.87	13.35	8.52	5.05	3.92
Towed Vehicles	90.02	79.03	65.87	53.44	42.51	32.92	24.97	15.21	8.95	5.66	3.09	1.78	1.13
All Vehicles	88.14	75.78	61.37	48.79	39.23	29.79	21.79	13.05	7.79	4.47	2.28	1.16	0.71