

Annexure A-1 : Provincial Speeds : June to September 2004

% of Traffic Exceeding Speed per Month				
Gauteng	Traffic	% Vehs Eceeding Speed		
Hans Strijdom	No. of Vehicles	>120	>130	>140
June	469,758	34.26	13.46	4.82
July	385,163	33.55	13.25	4.76
August	392,961	33.45	12.75	4.53
September	497,556	32.52	12.14	4.23
4 Month Tot / Av	1,745,438	33.43	12.88	4.57
Grootdraai	No. of Vehicles	>120	>130	>140
June	289,385	41.73	19.65	8.00
July	405,146	41.73	19.76	8.25
August	437,895	40.34	19.23	7.96
September	566,377	40.68	19.57	8.15
4 Month Tot / Av	1,906,056	41.10	19.55	8.09
Balfour Int	No. of Vehicles	>120	>130	>140
June	403,900	28.69	11.51	4.18
July	350,085	29.38	12.18	4.44
August	353,893	30.16	12.13	4.27
September	460,025	30.06	12.08	4.22
4 Month Tot / Av	1,567,903	29.58	11.97	4.27
All Stations	No. of Vehicles	>120	>130	>140
June	1,370,296	35.33	15.13	5.78
July	1,140,394	35.18	15.24	5.90
August	1,184,749	35.01	14.96	5.72
September	1,523,958	34.81	14.88	5.68
4 Month Tot / Av	5,219,397	35.07	15.04	5.77

% of Traffic Exceeding Speed per Month				
KwaZuluNatal	Traffic	% Vehs Eceeding Speed		
Winkelspruit	No. of Vehicles	>120	>130	>140
June	731,930	20.20	5.93	1.52
July	575,224	20.22	6.01	1.53
August	612,242	19.49	5.75	1.49
September	786,460	19.26	5.66	1.45
4 Month Tot / Av	2,705,856	19.77	5.83	1.49
Merrivale	No. of Vehicles	>120	>130	>140
June	731,873	13.29	3.61	0.85
July	778,680	13.60	3.72	0.90
August	785,442	13.73	3.82	0.92
September	1,019,974	13.78	3.76	0.90
4 Month Tot / Av	3,428,135	13.61	3.73	0.89
Ballengeich	No. of Vehicles	>120	>130	>140
June	177,007	16.97	6.70	2.45
July	146,632	17.05	6.74	2.44
August	150,506	16.40	6.45	2.38
September	191,209	17.53	7.13	2.62
4 Month Tot / Av	665,354	17.02	6.78	2.48
All Stations	No. of Vehicles	>120	>130	>140
June	1,752,976	16.55	4.89	1.29
July	1,500,536	16.48	4.89	1.29
August	1,548,190	16.27	4.84	1.29
September	1,997,643	16.30	4.83	1.28
4 Month Tot / Av	6,799,345	16.40	4.86	1.29

% of Traffic Exceeding Speed per Month				
Western Cape	Traffic	% Vehs Eceeding Speed		
Touwsriver	No. of Vehicles	>120	>130	>140
June	99,503	26.50	12.97	5.46
July	89,374	28.48	13.59	5.59
August	78,138	26.13	12.88	5.58
September	109,157	27.39	13.16	5.67
4 Month Tot / Av	376,172	27.15	13.15	5.58
Groot Brak	No. of Vehicles	>120	>130	>140
June	200,204	31.72	14.57	6.31
July	259,497	31.00	13.68	5.63
August	242,149	30.99	13.90	5.89
September	335,151	32.37	14.82	6.31
4 Month Tot / Av	1,130,000	31.59	14.30	6.06
Malmesbury	No. of Vehicles	>120	>130	>140
June	202,322	15.85	6.29	2.28
July	165,372	17.23	6.79	2.39
August	156,982	18.07	7.21	2.61
September	225,938	17.96	7.08	2.50
4 Month Tot / Av	750,614	17.26	6.83	2.44
All Stations	No. of Vehicles	>120	>130	>140
June	595,028	25.45	11.49	4.80
July	514,243	26.13	11.45	4.58
August	477,269	25.94	11.53	4.76
September	670,246	26.70	11.94	4.92
4 Month Tot / Av	2,256,786	26.08	11.62	4.78

% of Traffic Exceeding Speed per Month				
Eastern Cape	Traffic	% Vehs Eceeding Speed		
Humansdorp	No. of Vehicles	>120	>130	>140
June	105,796	28.05	12.73	5.06
July	97,767	28.54	12.43	4.71
August	88,139	28.24	12.93	5.20
September	121,690	24.99	11.11	4.29
4 Month Tot / Av	413,392	27.31	12.22	4.78
Cookhouse	No. of Vehicles	>120	>130	>140
June	35,132	26.77	14.02	6.47
July	40,436	27.73	14.19	6.50
August	39,538	26.96	14.37	6.64
September	52,211	27.78	14.53	6.63
4 Month Tot / Av	180,159	27.32	14.28	6.56
GraaffReinet	No. of Vehicles	>120	>130	>140
June	39,466	29.55	13.53	5.52
July	36,006	31.68	14.46	5.76
August	30,981	30.43	14.72	6.33
September	41,706	31.85	14.93	6.38
4 Month Tot / Av	148,159	30.90	14.40	5.99
All Stations	No. of Vehicles	>120	>130	>140
June	193,236	28.04	13.21	5.50
July	174,209	29.00	13.26	5.34
August	158,658	28.35	13.64	5.78
September	215,607	26.99	12.68	5.26
4 Month Tot / Av	741,710	28.03	13.16	5.45

% of Traffic Exceeding Speed per Month				
Free State	Traffic	% Vehs Eceeding Speed		
FichardtSt	No. of Vehicles	>120	>130	>140
June	316,850	26.70	9.38	3.10
July	269,079	26.53	9.04	2.96
August	263,172	26.27	9.21	3.00
September	355,516	26.78	9.29	3.06
4 Month Tot / Av	1,204,617	26.59	9.24	3.03
Winburg	No. of Vehicles	>120	>130	>140
June	36,708	35.58	18.54	8.27
July	48,230	33.92	17.38	7.47
August	45,749	26.09	13.57	6.04
September	61,930	35.31	18.20	8.19
4 Month Tot / Av	212,892	33.09	17.11	7.59
Ladybrand	No. of Vehicles	>120	>130	>140
June	94,655	20.41	9.12	3.65
July	77,525	19.72	8.56	3.41
August	75,728	18.50	8.13	3.09
September	67,348	19.03	8.29	3.22
4 Month Tot / Av	315,256	19.49	8.57	3.36
All Stations	No. of Vehicles	>120	>130	>140
June	468,488	26.51	10.44	3.84
July	394,834	26.09	9.97	3.60
August	384,649	24.72	9.51	3.38
September	484,794	26.79	10.29	3.74
4 Month Tot / Av	1,732,765	26.10	10.09	3.65

% of Traffic Exceeding Speed per Month				
Mpumalanga	Traffic	% Vehs Eceeding Speed		
Delmas	No. of Vehicles	>120	>130	>140
June	403,779	49.42	29.17	14.00
July	344,253	49.38	29.10	13.99
August	345,532	49.52	29.00	14.00
September	445,941	49.51	29.31	14.25
4 Month Tot / Av	1,539,505	49.46	29.16	14.07
Ermelo	No. of Vehicles	>120	>130	>140
June	6,748	38.68	21.34	10.15
July	10,035	39.24	21.43	9.86
August	8,352	37.66	20.19	8.99
September	12,902	39.36	21.35	10.11
4 Month Tot / Av	42,294	38.82	21.14	9.84
Davel	No. of Vehicles	>120	>130	>140
June	16,412	25.27	11.17	4.44
July	14,681	24.31	10.62	4.12
August	12,247	23.34	10.51	4.47
September	18,260	25.07	10.84	4.44
4 Month Tot / Av	61,600	24.60	10.81	4.37
All Stations	No. of Vehicles	>120	>130	>140
June	431,196	48.23	28.29	13.54
July	368,969	48.11	28.16	13.49
August	366,131	48.37	28.18	13.57
September	477,103	48.30	28.39	13.77
4 Month Tot / Av	1,643,399	48.25	28.27	13.60

% of Traffic Exceeding Speed per Month				
North West	Traffic	% Vehs Eceeding Speed		
Orkney	No. of Vehicles	>120	>130	>140
June	387,155	35.80	15.98	6.40
July	312,704	34.85	14.94	5.77
August	314,704	33.74	14.41	5.59
September	419,427	34.11	14.52	5.54
4 Month Tot / Av	1,433,990	34.65	14.98	5.83
Coligny	No. of Vehicles	>120	>130	>140
June	57,091	33.85	17.08	7.74
July	71,285	34.45	17.48	8.09
August	68,461	33.17	16.78	7.71
September	91,075	32.40	16.08	7.31
4 Month Tot / Av	317,122	33.42	16.82	7.69
Sannieshof	No. of Vehicles	>120	>130	>140
June	49,090	27.38	12.23	4.76
July	39,744	27.92	12.39	4.72
August	40,102	27.03	12.29	4.65
September	51,716	27.14	12.10	4.69
4 Month Tot / Av	180,652	27.35	12.24	4.71
All Stations	No. of Vehicles	>120	>130	>140
June	522,546	34.69	15.81	6.47
July	423,733	34.13	15.13	6.06
August	423,267	33.01	14.60	5.85
September	562,218	33.19	14.55	5.75
4 Month Tot / Av	1,931,764	33.76	15.03	6.03

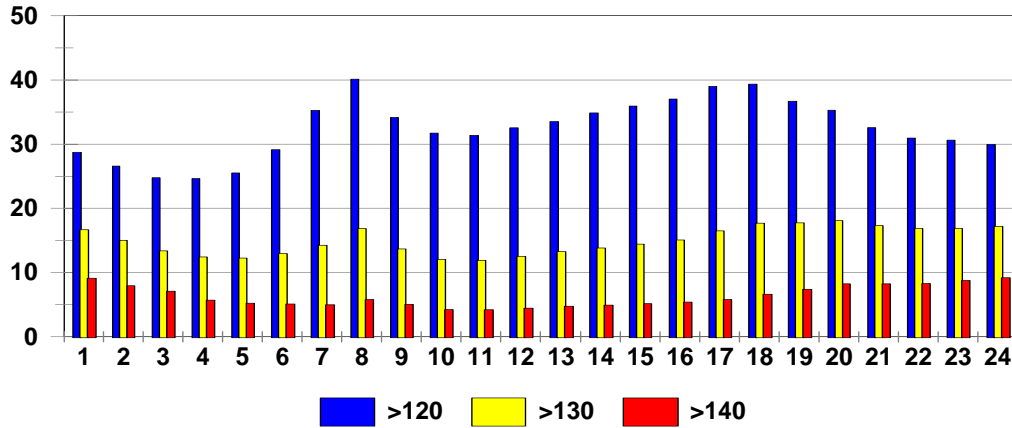
% of Traffic Exceeding Speed per Month				
Limpopo	Traffic	% Vehs Eceeding Speed		
Pietersburg	No. of Vehicles	>120	>130	>140
June	251,736	40.52	20.10	9.05
July	234,375	40.58	20.49	9.30
August	235,565	40.10	20.16	9.02
September	305,945	37.96	18.67	8.31
4 Month Tot / Av	1,027,621	39.67	19.78	8.88
Kranskop	No. of Vehicles	>120	>130	>140
June	288,953	18.88	6.78	2.33
July	297,483	18.58	6.62	2.29
August	297,710	18.23	6.49	2.17
September	386,574	17.85	6.27	2.12
4 Month Tot / Av	1,337,978	18.37	6.53	2.23
Constantia	No. of Vehicles	>120	>130	>140
June	341,634	33.51	17.80	8.63
July	253,211	33.68	17.97	8.79
August	289,182	34.12	18.35	8.93
September	382,098	33.66	18.16	8.89
4 Month Tot / Av	1,266,125	33.73	18.07	8.81
All Stations	No. of Vehicles	>120	>130	>140
June	949,581	29.88	14.27	6.38
July	785,069	30.02	14.42	6.48
August	822,457	30.08	14.57	6.51
September	1,074,617	29.20	14.03	6.29
4 Month Tot / Av	3,631,724	29.75	14.30	6.40

% of Traffic Exceeding Speed per Month				
Northern Cape	Traffic	% Vehs Eceeding Speed		
Hanover Rd.	No. of Vehicles	>120	>130	>140
June	60,412	28.51	14.79	6.73
July	54,503	30.10	15.53	6.76
August	47,595	26.63	14.11	6.63
September	69,699	28.47	14.64	6.54
4 Month Tot / Av	232,209	28.49	14.78	6.66
Warrenton	No. of Vehicles	>120	>130	>140
June	70,823	31.39	15.08	6.44
July	87,056	31.38	14.93	6.20
August	82,624	31.43	15.22	6.63
September	110,179	31.11	14.58	6.11
4 Month Tot / Av	383,081	31.31	14.93	6.33
Kuruman	No. of Vehicles	>120	>130	>140
June	64,939	30.85	14.45	5.84
July	52,855	31.31	14.57	5.93
August	50,888	29.68	13.97	5.73
September	70,203	29.01	13.48	5.50
4 Month Tot / Av	238,885	30.16	14.09	5.73
All Stations	No. of Vehicles	>120	>130	>140
June	228,573	30.48	14.82	6.35
July	194,414	31.00	15.00	6.28
August	181,107	29.68	14.58	6.38
September	250,081	29.79	14.29	6.06
4 Month Tot / Av	854,175	30.22	14.65	6.25

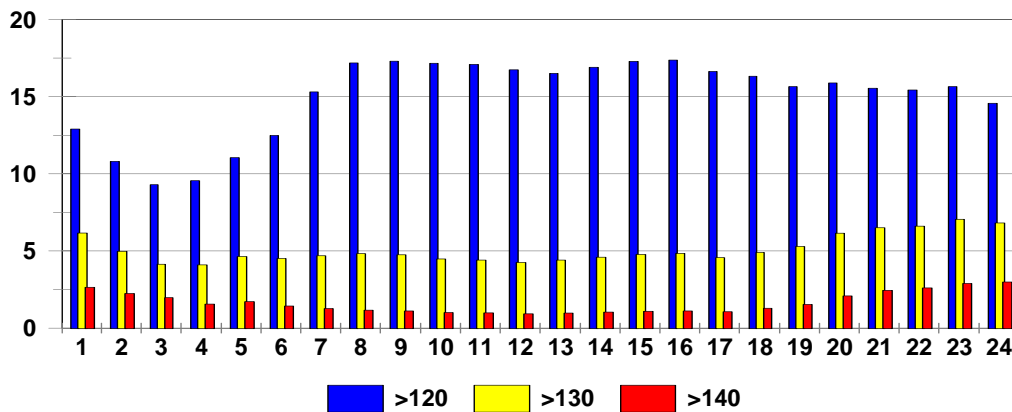
% of Traffic Exceeding Speed per Month				
RSA	Traffic	% Vehs Eceeding Speed		
All 1	No. of Vehicles	>120	>130	>140
June	2,826,919	32.22	14.95	6.24
July	2,362,442	32.47	14.93	6.15
August	2,378,048	31.51	14.58	6.12
September	3,111,391	31.22	14.28	5.93
4 Month Tot / Av	10,678,800	31.84	14.67	6.10
All 2	No. of Vehicles	>120	>130	>140
June	1,716,917	30.21	14.52	6.28
July	1,997,848	30.18	14.35	6.13
August	2,007,920	28.73	13.73	5.88
September	2,636,373	30.07	14.35	6.20
4 Month Tot / Av	8,937,717	29.85	14.27	6.14
All 3	No. of Vehicles	>120	>130	>140
June	1,389,425	25.39	11.42	4.64
July	1,136,111	25.81	11.59	4.67
August	1,160,509	25.31	11.53	4.72
September	1,508,503	25.70	11.57	4.72
4 Month Tot / Av	5,194,548	25.56	11.53	4.69
All Stations	No. of Vehicles	>120	>130	>140
June	6,511,920	30.57	14.26	5.99
July	5,496,401	30.68	14.17	5.89
August	5,546,477	30.16	14.05	5.91
September	7,256,267	30.23	13.99	5.86
4 Month Tot / Av	24,811,065	30.41	14.11	5.91

4-Month Average Speed per Hour of Day

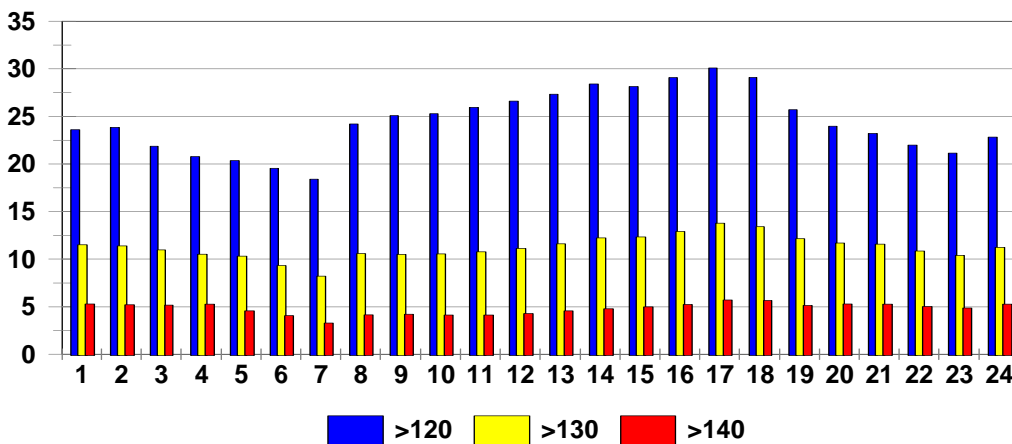
% of Traffic Exceeding Speed
All Stations : Gauteng : Jun-Sep 2004



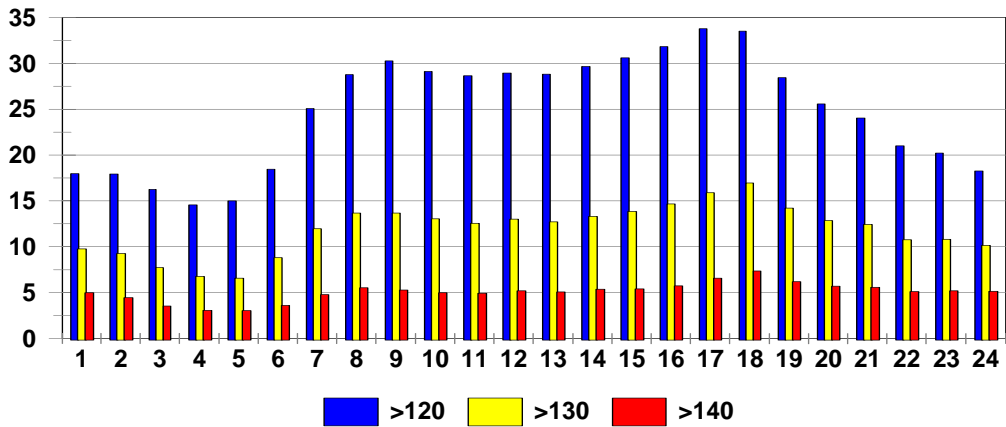
% of Traffic Exceeding Speed
All Stns : KwaZuluNatal : Jun-Sep 2004



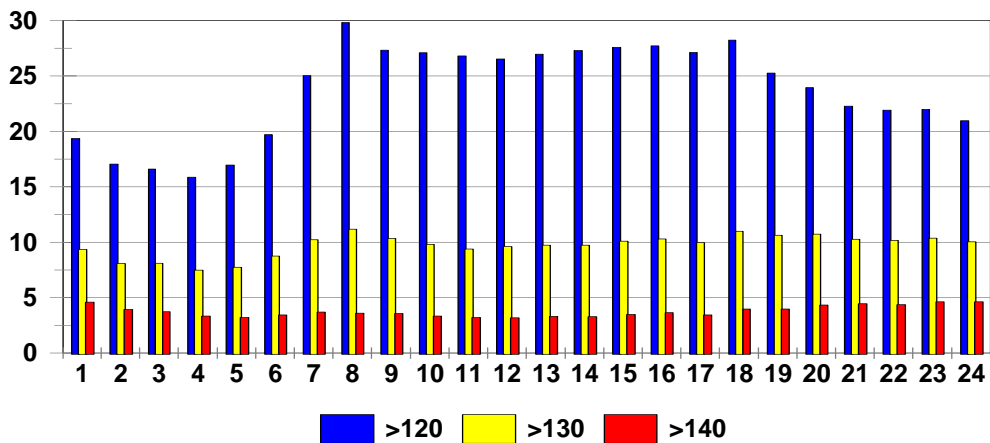
% of Traffic Exceeding Speed
All Stns : Western Cape : Jun-Sep 2004



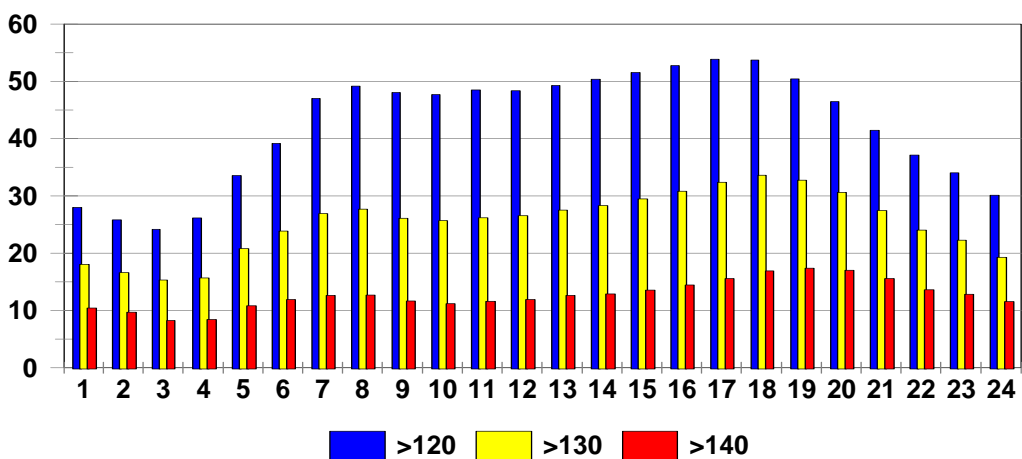
% of Traffic Exceeding Speed
All Stns : Eastern Cape : Jun-Sep 2004



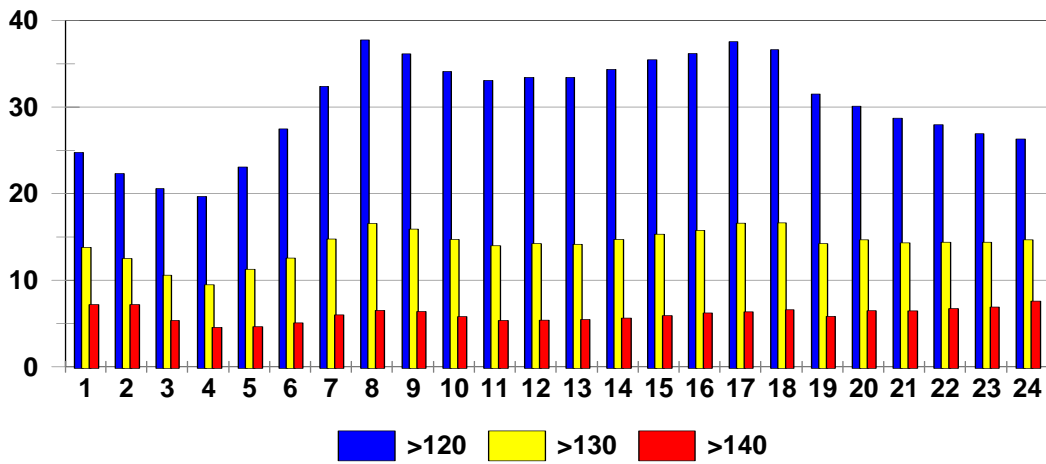
% of Traffic Exceeding Speed
All Stns : Free State : Jun-Sep 2004



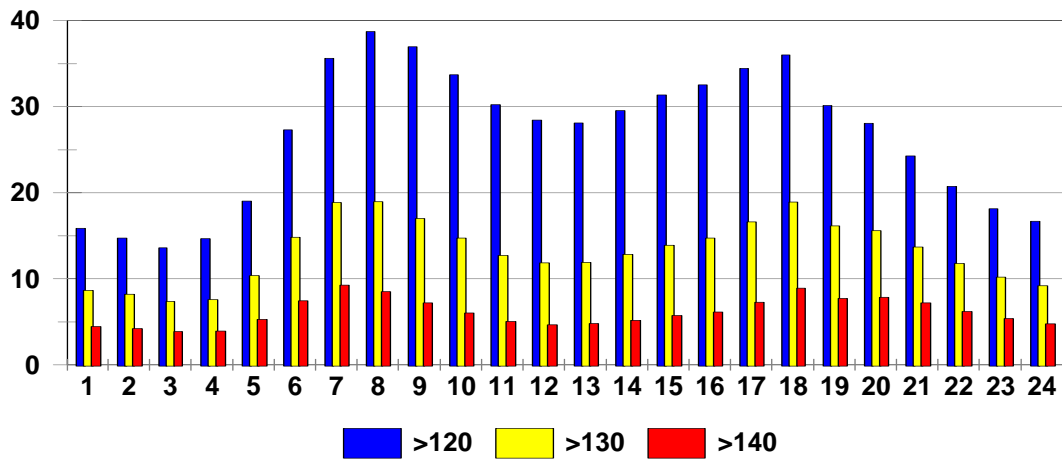
% of Traffic Exceeding Speed
All Stns : Mpumalanga : Jun-Sep 2004



% of Traffic Exceeding Speed
All Stns : North West : Jun-Sep 2004



% of Traffic Exceeding Speed
All Stns : Limpopo : Jun-Sep 2004



% of Traffic Exceeding Speed
All Stns : NorthernCape : Jun-Sep 2004

