



**Road Traffic Management Corporation
(RTMC)**

**December 2005
Road Traffic Report**

on

**Number of Registered, Un-Roadworthy and Un-Licensed
Vehicles, Driving Licences, PrDPs,
Traffic Volumes, Speed, Distance Travelled and
Fatal Crashes**

10 January 2006

Index

Section	Topic	Page
1	Summary	4
2	Number of Vehicles, Mobility, Traffic Volumes, Speed & Distance	9
	2.1 Number of registered vehicles	9
	2.2 Mobility	11
	2.3 Traffic Volumes and speed : December	12
	2.4 Estimated distance travelled : January to November	14
3	Number of Un-Roadworthy and Un-Licensed Vehicles	16
	3.1 General	16
	3.2 Number of un-roadworthy vehicles	18
	3.3 Number of un-licensed vehicles	20
	3.4 Outstanding vehicle licence fees	21
4	Number of Driving Licences and PrDP's Issued and Expired	21
	4.1 Learners' Licences	21
	4.2 Driving licences	22
	4.3 Expired driving licence cards	23
	4.4 Number of professional driving permits (PrDP's)	24
	4.5 Expired professional driving permits	25
5	Number of Fatal Crashes and Fatalities	27
	5.1 Fatal crashes per type of crash	27
	5.2 Fatalities per type of crash	28
	5.3 Vehicles involved in fatal crashes	30
	5.4 Fatalities per type of vehicle	33
	5.5 Fatalities per age group	35
	5.6 Day and time of crashes	36
	5.7 Road safety performance indicators : rates and trends	38
	5.8 Major fatal crashes during December 2005	39
	5.9 Overview of fatal crashes and fatalities over the past 3 years	40
	5.10 Estimated cost of fatal crashes	42
6	Road Safety Communication : December 2005	43
7	Traffic Law Enforcement : December 2005	43
8	Discussion and Recommendations	51

Index of Annexures

Annexure	Topic	Page
A	Number of Vehicles per Province and Vehicle Type	55
B-1	Estimated Distance Travelled per Month	56
B-2	Estimated Distance Travelled per Province and Vehicle Type	57
C	Number of Un-Roadworthy and Un-Licensed Vehicles	58
D	Number of Un-Roadworthy Vehicles	59
E	Number of Un-Licensed Vehicles	60
F	Outstanding vehicle licence fees	61
G	Number of Learner Driving Licences Issued	62
H	Number of Driving Licences Issued	63
I	Number of Professional Driving Permits (PrPD's) Issued	64
J	Number of Fatal Crashes per Type of Crash	65
K	Number of Fatalities per Type of Crash	66
L	Number of Crashes and Fatalities per Day of Week	67
M	Number of Crashes per Time of Day	68
N	Number of Fatalities per Time of Day	69
O	Major Fatal Crashes during December 2005	70
P	Number of Monthly Fatal Crashes : 2003 - 2005	71
Q	Number of Monthly Fatalities : 2003 - 2005	72

1. Summary

1.1 Road Safety Communication

During December 2005 the Arrive Alive road safety promotion and education campaign at national level spent in the order of R15,0 million on the production, flighting, printing and distribution of road safety promotion material. These include the following:

- Television adverts on SABC; e-TV and DSTV channels;
- Radio adverts on SABC; commercial and community radio stations; and
- Printed adverts in the Sunday newspapers, YOU; HUISGENOOT and DRUM magazines.

In addition use was made of bill boards; street pole advertising; mobile trailers; as well as pamphlets; posters; leaflets and bumper stickers to promote awareness of, amongst others, the effects of speed; alcohol and the wearing of seatbelts in road crashes.

1.2 Traffic Law Enforcement

Information provided by 7 Provinces shows that during December a total of 1,727 roadblocks were conducted at which 246,524 vehicles were stopped and both the driver and vehicle was inspected. A total of 1,007 drivers were arrested for driving under the influence of alcohol; 251,976 notices were issued for vehicle defects and a total of 1,232 vehicles were suspended. 5,564 notices were issued for incorrect or expired driver and vehicle documentation. A total of 2,236 notices were issued for overloading.

A further total of 6,991 general law enforcement operations were conducted. During these operations 304,298 notices were issued for speed; 3,773 for moving violations such as illegal and unsafe overtaking, driving through red traffic signals and ignoring traffic signs; and a further 132,925 notices for all other offences.

1.3 Number of Fatal Crashes

The number of fatal crashes during December 2005 increased by 197 (19,84%) from 993 fatal crashes during December 2004 to 1,190 fatal crashes. With the exception of the Free State all other Province experienced increases. The number of fatal crashes in the Free State decreased by 4 (5,56%) from 72 in 2004 to 68 in

2005. On a Provincial percentage basis, the Province with the biggest increase was Limpopo where the number of crashes increased by 38 (44,71%) from 85 crashes in 2004 to 123 crashes in 2005.

The number of fatalities during December 2005 increased by 209 (16,92%) from 1,237 fatalities during December 2004 to 1,446 fatalities in December 2005. Driver fatalities increased by 41 (13,17%); passenger fatalities increased by 41 (9,38%) and pedestrian fatalities increased by 127 (26,10%). The percentage passenger fatalities (as a percentage of the total) changed from 35,65% in 2004 to 33,35% in 2005 and pedestrian fatalities changed from 39,45% to 42,55% of the total in 2005.

Some information on the age groups of persons killed: the highest percentage of driver fatalities (17,55%) was between the ages of 25 to 29. The highest percentage of passenger fatalities was also in this age group. The highest percentage of pedestrian fatalities (13,92%) was in the age group 30 to 34 years; followed by 12,28% in the age group 25 to 30. In the order of 10% of all pedestrian fatalities was in the age group 5 to 9 years.

The number of vehicles involved in fatal crashes increased by 195 (15,41%) from 1,267 vehicles in December 2004 to 1,462 vehicles in 2005.

On a vehicle type percentage basis, the biggest increase was in the number of buses, which increased by 14 (75,79%) from 19 buses in 2004 to 33 buses in 2005. The number of minibus taxis increased by 24 (46,45%) from 51 in 2004 to 75 in December 2005. Minibuses decreased by 21 (19,71%) from 107 in 2004 to 86 in 2005. Motorcycles increased by 11 (45,79%) from 25 in 2004 to 36 motorcycles in 2005.

The number of LDV's (light delivery vehicles or "bakkies") increased by 40 (18,28%) from 220 to 260 in December 2005. The number of trucks decreased by 8 (6,39%) from 119 trucks in December 2004 to 111 trucks in December 2005.

The overall average crash rate per type of vehicle increased by 0,15 (8,10%) from a rate of 1,90 vehicles in crashes per 10,000 vehicles registered, to a rate of 2,05 in December 2005. On a vehicle percentage basis the biggest increase was for buses, which increased by 3,75 (56,89%) from a rate of 6,59 in 2004 to rate of 10,34 buses in crashes per 10,000 registered. Minibuses remained high at a rate in the order of 6 per 10,000 registered. Although there was a slight decrease, trucks remained at a rate in the order of about 4.

During December 2005 in the order of 64,3% crashes happened over weekends (Friday, Saturday and Sunday) in comparison to 57,6% during December the previous year. This was possibly also contributed to by the shifting of the day of Reconciliation from a Thursday in 2004 to a Friday in 2005. During 2004 14,7% of the weekday crashes happened on Thursdays in comparison with 11,56% on Thursdays during 2005.

In 2005 16,26% of the daily crashes happened between midnight and 06:00 in the morning; 17,16% between 06:00 and 12:00 midday; 26,0% between 12:00 and 18:00 and 40,58% between 18:00 and midnight. In the order of 50% of pedestrians killed on national and major provincial roads were between the hours of 18:00 and midnight.

There were a total of 15 major crashes in December 2005 – these are crashes in which 5 or more persons were killed. A total of 110 persons were killed in these 15 fatal crashes, involving 26 vehicles at an average severity rate of 7,3 persons killed per crash. Known information indicates that a further 25 persons were seriously injured and 73 sustained slight injuries in these crashes.

On looking at road safety performance indicators, some rates and trends are briefly summarized as follows:

- The number of fatal crashes per 10,000 vehicles increased by 0,18 (12,25%) from 1,49 in 2004 to 1,67 in 2005.
- The number of fatalities per 10,00 vehicles increased by 0,18 (9,51%) from 1,85 in 2004 to 2,03;
- The number of fatalities per 100,000 human population increased by 0,43 (16,17%) from 2,65 to 3,07;
- The severity of crashes (average number of persons killed per crash) decreased by 0,03 (2,43%) from 1,25 to 1,22; and
- The vehicle severity rate (average number of persons killed per vehicle) increased by 0,01 (1,31%) from 0,98 to 0,99 in 2005.

On considering the number of fatal crashes over the past 3 years : From 2003 to 2004 the number of fatal crashes increased by 232 (2,27%) from 10,239 to 10,471. From 2004 to 2005 the number of fatal crashes during the year increased by 1,143 (10,92%) from 10,471 to 11,614 crashes in 2005. The number of fatalities increased by 281 (2,28%) from 12,354 in 2003 to 12,635 in 2004 and from 2004 the increase was 1,489 (11,79%) from 12,635 to 14,125.

The total cost of fatal crashes in 2004 was in the order of R 8,89 billion and in 2005 about R 9,99 billion. The estimated cost of fatal crashes during December 2004 was in the order of R 872,06 million and during December 2005 about R 1,02 billion.

1.4 Number of Registered Vehicles

The number of vehicles registered on the National Traffic Information System (NaTIS) increased by 492,009 (6,58%) from 7,479,178 on 31 December 2004 to 7,971,187 on 31 December 2005. Motorised vehicles increased by 6,76% and towed vehicles by 5,04%. The number of vehicles per type of vehicle is given in the table below.

The total number of vehicles that are either un-roadworthy, un-licenced or both increased by 74,676 (12,69%) from 588,556 vehicles at the end of December 2004 to 663,232 vehicles at the end of December 2005. In 2004 these vehicles represented 7,87% of the total vehicle population and in 2005 it was 8,32% of the total vehicle population.

1.5 Traffic Volumes and Speed

During December there was a general country-wide increase of 12,42% in the daily traffic volumes from an average of about 5,581 vehicles per day in 2004 to an average of 6,275 vehicles per day in 2005.

There was a general increase in the number of vehicles exceeding the speed limit of 120km/h across the country. The percentage of vehicles exceeding the limit over weekends was generally higher than during the other days of the week (Monday to Thursday). In December 2004 an average of 21,23% of the traffic exceeded the limit during weekdays. In December 2005 this increased to 26,50%. In December 2004 an average of 24,06% exceeded the 120km/h limit over weekends – this percentage increased to 30,68% in December 2005.

1.6 Number of Driving Licences and Professional Driving Permits (PrDP's)

The number of learner driving licences issued increased by 95,815 (10,98%) from 872,313 at the end of December 2004 to 968,128 at the end of December 2005. Learner licences for motorcycles increased by 5,410 (17,19%) from 31,472 in 2004 to 36,882 in 2005. Learner licences for light motor vehicles decreased by 9,856

(2,68%) from 367,401 to 357,545 in 2005; and for heavy motor vehicles increased by 100,261 (21,18%) from 473,440 in 2004 to 573,701 in December 2005.

The number of driving licences issued increased by 302,254 (4,19%) from 7,211,276 in December 2004 to 7,513,530 at the end of December 2005. On a licence type percentage basis, the biggest increase was in category C1 licences (motor vehicles 3,5t to 16,0t) which increased by 150,615 (22,62%) from 665,817 in 2004 to 816,432. The number of driving licence cards that expired for 4 months or longer, decreased by 36,171 (15,73%) from 229,981 in 2004 to 193,810 at the end of 2005.

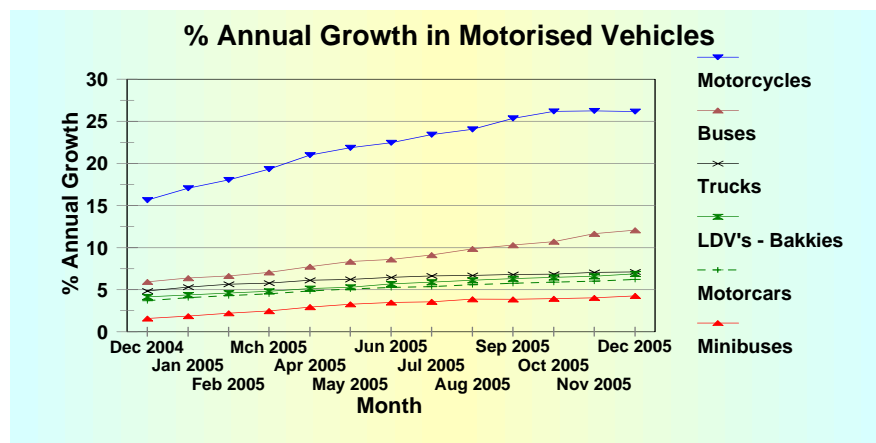
The number of PrDP's issued increased by 13,639 (2,22%) from 614,187 in 2004 to 627,826 at the end of December 2005. The number of PrDP's that expired for 4 months or longer, increased by 8,501 (11,01%) from 77,189 in 2004 to 85,690 at the end of 2005.

2. Number of Registered Vehicles, Mobility, Traffic Volumes, Speed and Distance Travelled

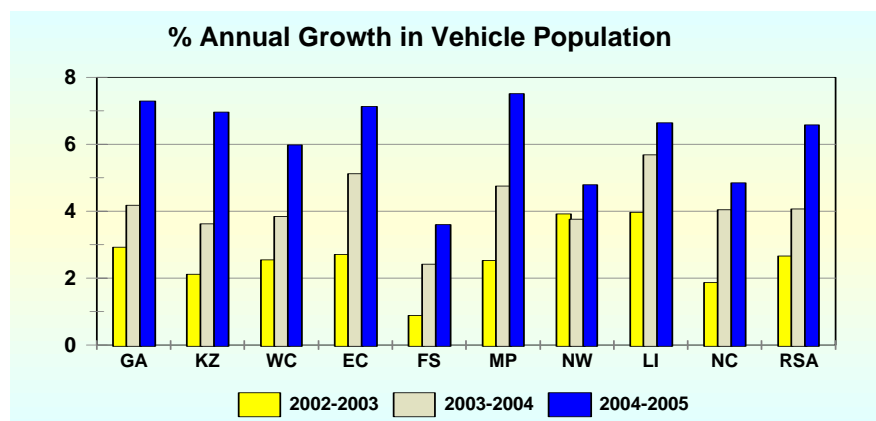
2.1 Number of Registered Vehicles

The number of registered vehicles increased by 492,009 (6,58%) from 7,479,178 on 31 December 2004 to 7,971,187 on 31 December 2005. On a Provincial percentage basis the biggest increase was in Mpumalanga, where the number of vehicles increased by 33,912 (7,51%) from 451,389 in December 2004 to 485,301 on 31 December 2005. On a Vehicle Type percentage basis the biggest increase was in motorcycles, which showed an increase of 49,236 (26,14%) from 188,320 in December 2004 to 237,556 in 2005; followed by buses which increased by 12,05% from 28,834 at the end of 2004 to 32,308 at the end of 2005.

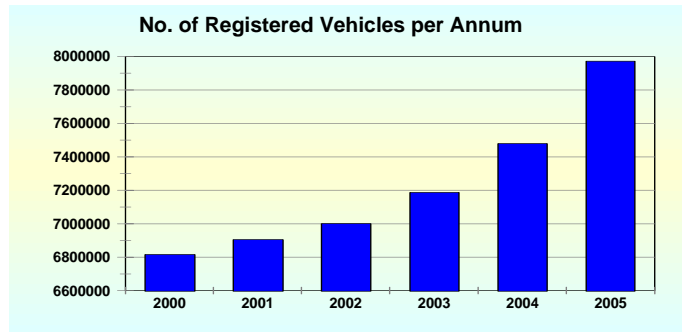
The annual percentage increase (on a month-to-month basis) in the number of vehicles per type of vehicle, from December 2004 to December 2005, is reflected in the graph below.



The annual percentage increase in the number of vehicles per Province over the past 3 years is reflected in the graph below.



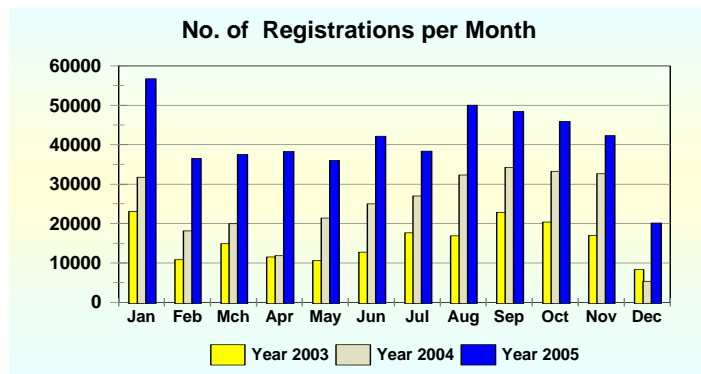
The total number of vehicles registered at the end of each year over the last 6 years is shown in the graph below.



The total number of registered vehicles at the end of each year as follows:

- 2000 : 6,814,531
- 2001 : 6,904,355
- 2002 : 7,000,316
- 2003 : 7,186,537
- 2004 : 7,479,178
- 2005 : 7,971,187

The number of vehicle registrations per month over the last 3 years is shown in the graph below.



The highest months per year generally are : January, August and September. The year average monthly registrations for the various years were as follows:

2003:

- Motorised vehicles : 14,341
- Towed vehicles : 1,177
- All vehicles : 15,518

2004 :

- Motorised vehicles : 21,646
- Towed vehicles : 2,741
- All vehicles : 24,387

2005 :

Motorised vehicles : 37,629

Towed vehicles : 3,371

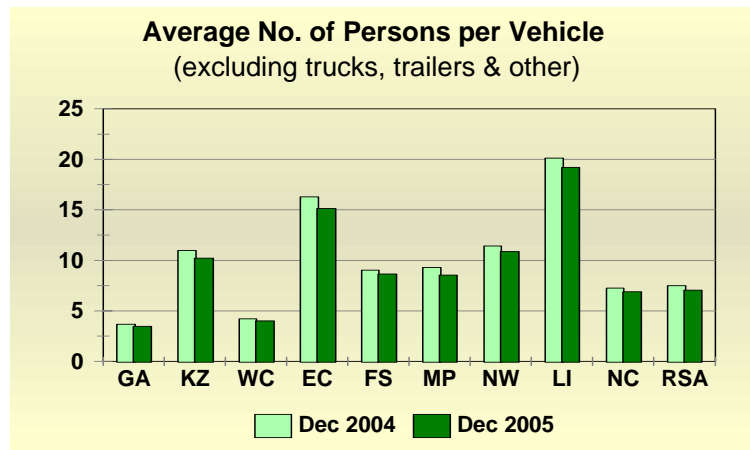
All vehicles : 41,001

Detailed information on the number of registered vehicles per Province and per type of vehicle at the end of December 2004 and 2005 respectively are attached in the tables under **Annexure A**.

2.2 Mobility

The average number of persons per vehicle (excluding trucks, towed vehicles and “other” and “unknown” vehicles) at the end of December 2004 and 2005 is shown in the table and graph below.

Average Number of Persons per Vehicle (excluding trucks, other, unknown and towed vehicles)										
Year	GA	KZ	WC	EC	FS	MP	NW	LI	NC	RSA
Dec 2004	3.66	10.98	4.19	16.28	9.01	9.29	11.41	20.11	7.23	7.47
Dec 2005	3.47	10.22	4.01	15.12	8.64	8.54	10.87	19.18	6.89	7.03
% change	5.12	6.87	4.51	7.10	4.14	8.13	4.77	4.61	4.72	5.85



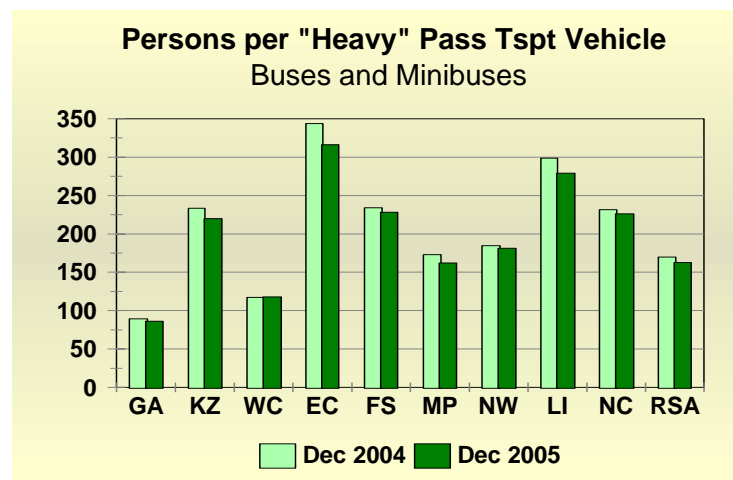
The information in the table and graph above show that there are in the order of 20 persons per vehicle in Limpopo, 15 persons per vehicle in the Eastern Cape and about 3 to 4 persons per vehicle in Gauteng.

The overall mobility in terms of the number of persons per road vehicle (vehicles that can reasonably transport passengers – motorcars, minibuses, buses, motorcycles and LDV’s “bakkies”), improved by 5,85% from 7,47 persons per vehicle in December 2004 to 7,03 persons per vehicle in December 2005. On a Provincial percentage basis the biggest improvement was in Mpumalanga where

the average number of persons per vehicle changed by 8,13% from 9,29 persons per vehicle in December 2004 to 8,54 persons per vehicle in 2005.

The average number of persons per “heavy” road passenger transport vehicle (buses and minibuses) is shown in the table and graph below.

Average No. of Persons per "Heavy" Passenger Transport Vehicle (buses and minibuses)										
Year	GA	KZ	WC	EC	FS	MP	NW	LI	NC	RSA
Dec 2004	89.17	233.31	117.24	343.92	233.92	172.90	184.64	298.65	231.43	169.66
Dec 2005	86.12	219.72	117.68	316.20	228.04	161.80	181.26	279.03	225.97	162.52
% change	3.42	5.82	-0.37	8.06	2.51	6.42	1.83	6.57	2.36	4.21



The information in the table and graph above show that in December 2005 there were in the order of 316 persons per “heavy” passenger transport vehicle in the Eastern Cape, 279 persons per vehicle in Limpopo and about 86 persons per vehicle in Gauteng. The country average is in the order of 163 persons per vehicle. (*minibuses include minibus taxis and privately owned minibuses).

The overall mobility in terms of the number of persons per “heavy” passenger road transport vehicle improved by 4,21% from about 170 persons per vehicle in December 2004 to 163 persons per vehicle in December 2005. On a Provincial percentage basis the biggest improvement was in the Eastern Cape where the average number of persons per vehicle changed by 8,06% from about 344 persons per vehicle in December 2004 to 316 persons per vehicle in 2005.

2.3 Traffic Volumes and Speed during December 2005

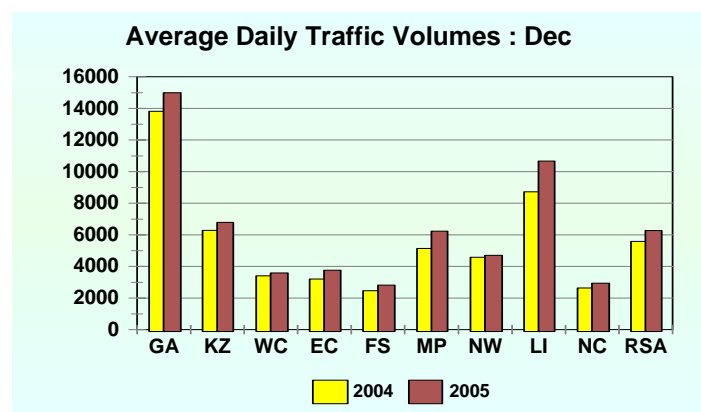
Traffic volumes and speeds over December 2005 were obtained from 27 traffic counting stations on the national road network, three (3) stations per province. The information collected were analysed and compared with those obtained during December 2004 at the same stations.

Detail in this regard is briefly given in the tables and discussed below.

2.3.1 Traffic volumes:

There was a general country-wide increase of 12,42% in the daily traffic volumes from an average of about 5,581 vehicles per day in December 2004 to an average of 6,275 vehicles per day in December 2005. In Limpopo the increase was 22,39% from 8,717 vehicles per day in 2004 to an average of 10,669 vehicles per day in December 2005. In Mpumalanga the increase was in the order of 21,39%. Provincial detail in this regard is shown in the table and graph below.

Average Daily Traffic (ADT) on Main Routes : December										
Year	GA	KZ	WC	EC	FS	MP	NW	LI	NC	RSA
2004	13,817	6,279	3,402	3,205	2,463	5,138	4,584	8,717	2,628	5,581
2005	14,995	6,786	3,581	3,761	2,813	6,237	4,691	10,669	2,939	6,275
% Change	8.53	8.07	5.26	17.35	14.21	21.39	2.33	22.39	11.83	12.42



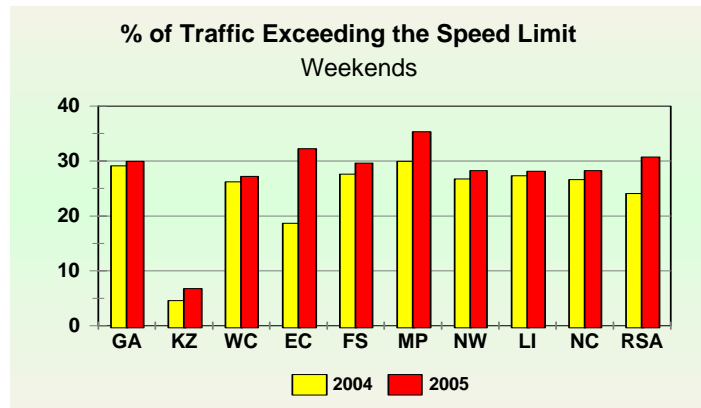
2.3.2 Speed:

There was a general increase in the number of vehicles exceeding the speed limit of 120km/h across the country. The percentage of vehicles exceeding the limit over weekends were generally higher than during the other days of the week (Monday to Thursday). In December 2004 an average of 21,23% of the traffic exceeded the limit during weekdays. In December 2005 this increased to 26,50%.

In December 2004 an average of 24,06% exceeded the 120km/h limit over weekends – this percentage increased to 30,68% in December 2005. In Gauteng 29,9% of the traffic exceeded the limit over weekends and in Mpumalanga the percentage exceeding the limit over weekends was in the order of 35,3%

Provincial detail in this regard is shown in the table and graph below.

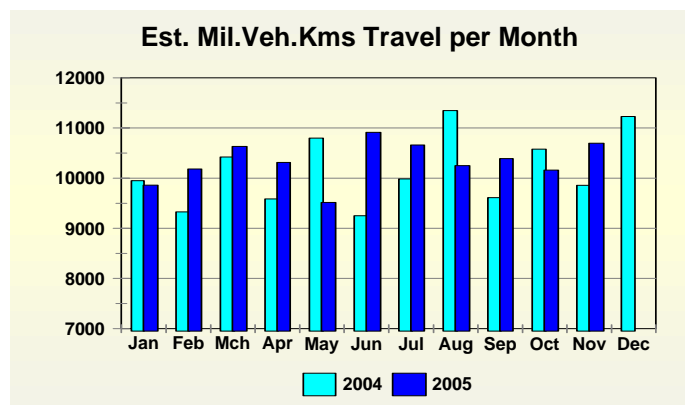
% of Traffic Exceeding the Speed Limit : December											
Year	Day	GA	KZ	WC	EC	FS	MP	NW	LI	NC	RSA
2004	weekday	28.20	2.76	23.70	17.90	23.50	24.00	24.30	22.50	24.20	21.23
	weekend	29.10	4.56	26.20	18.60	27.60	29.90	26.70	27.30	26.60	24.06
2005	weekday	27.30	3.59	24.00	24.90	31.00	27.50	24.00	24.60	25.10	26.50
	weekend	29.90	6.73	27.20	32.20	29.60	35.30	28.20	28.10	28.20	30.68



2.4 Estimated Distance Travelled (January to November)

The total estimated distance travelled by all road vehicles during the first 11 months of 2005 increased by 2,873 million vehicle kilometres (mvk) (2,59%) from 110,724 mvk in 2004 to 113,597 mvk in 2005. (No figures are available yet for December 2005). Detail in this regard is given in the table and graph below.

Estimated Total Million Vehicle Kilometres Travel per Month													Total RSA
Year	Jan	Feb	Mch	Apr	May	Jun	Jul	Aug	Sep	Oct	Nov	Dec	
2004	9,951	9,330	10,424	9,586	10,797	9,254	9,986	11,347	9,613	10,581	9,857		110,724
2005	9,863	10,184	10,634	10,315	9,519	10,914	10,663	10,252	10,390	10,164	10,698		113,597
Change	-88	855	211	729	-1,278	1,660	676	-1,095	777	-416	842		2,873
% Change	-0.88	9.16	2.02	7.61	-11.84	17.94	6.77	-9.65	8.09	-3.93	8.54		2.59



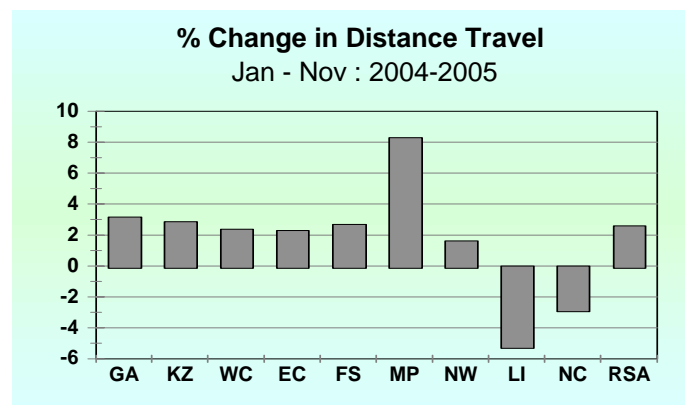
Some months with the highest increases were : February (9,16%); June (17,94%) and November (8,54%). Some months also show decreases in comparison with the

same month the previous year : May (11,84%); August (9,65%) and October (3,93%). It is suspected that these decreases in travel were as a result of the increase in fuel price during the respective months.

The estimated distance travelled per Province during the first 11 months of 2004 and 2005 respectively is given in the table below.

Estimated Million Vehicle Kilometres Travel per Province										Total RSA
Year	GA	KZ	WC	EC	FS	MP	NW	LI	NC	
Jan-Nov 2004	38,401	17,824	17,144	8,071	6,287	8,074	6,448	5,950	2,527	110,724
Jan-Nov 2005	39,613	18,332	17,550	8,256	6,456	8,743	6,552	5,641	2,453	113,597
Change	1,213	508	406	185	169	669	104	-309	-74	2,873
% Change	3.16	2.85	2.37	2.29	2.69	8.29	1.62	-5.18	-2.92	2.59

Most Provinces experienced increases in travel, with highest in Mpumalanga, which shows an increase of 669 mvk (8,29%) from 8,074 in 2004 to 8,743 mvk in 2005. Some Provinces show decreases in travel : Limpopo (5,18%) and the Northern Cape (2,92%). These figures are reflected in the graph below.

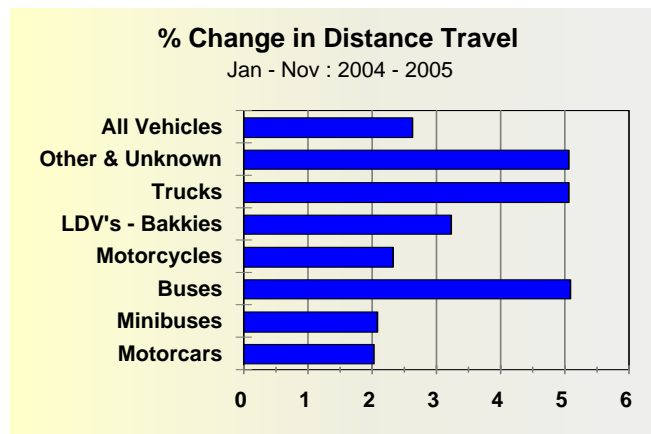


The estimates distances travelled per type of vehicle are shown in the table below.

Jan-Nov : Est. Mil.Veh.Kms Travel per Vehicle Type				
Vehicle Type	2004	2005	Change	% Change
Motorcars	64,586	65,876	1,290	2.00
Minibuses	6,472	6,605	133	2.06
Buses	1,018	1,070	52	5.07
Motorcycles	1,605	1,642	37	2.30
LDV's - Bakkies	27,380	28,254	874	3.19
Trucks	9,426	9,901	475	5.04
Other & Unknown	236	248	12	5.02
All Vehicles	110,724	113,597	2,873	2.59

The estimated distance travelled by buses increased by 52mvk (5,07%) from 1,018mvk in 2004 to 1,070mvk during the first 11 months of 2005. The estimated distance travelled by trucks increased by 5,04% to 9,901mvk and the distance

covered by LDV's (bakkies) increased by 3,19% to 28,254mvk in 2005. These figures are also reflected in the graph below.



More detailed estimated figures on distances travelled per month, Province and vehicle type are given in the tables under **Annexure B**.

3. Number of Un-Roadworthy and Un-Licensed Vehicles

3.1 General

The total number of vehicles that are either un-roadworthy, un-licensed or both increased by 74,676 (12,69%) from 588,556 vehicles at the end of December 2004 to 663,232 vehicles at the end of December 2005. In 2004 these vehicles represented 7,87% of the total vehicle population and in 2005 it was 8,32% of the total vehicle population. (Note should be taken that this information is as contained in the National Traffic Information System (NaTIS) and does not provide information on possible additional fraudulently obtained roadworthy certificates.)

(Un-roadworthy vehicles are those of which the owners failed to submit the vehicles for compulsory annual roadworthy tests (including buses, minibuses taxis and freight transport vehicles) or on change of ownership. Un-licensed vehicles are those of which the owners failed to renew the vehicle licences within the time frame allowed).

With the exception of North West, all Provinces showed increase in this regard. In North West the number of un-road worthy and un-licensed vehicles decreased by 3,813 (8,49%) from 44,914 vehicles in 2004 to 41,101 vehicles in 2005.

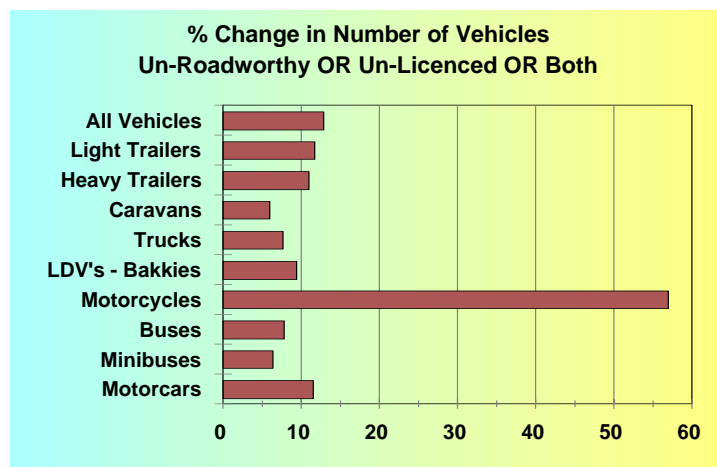
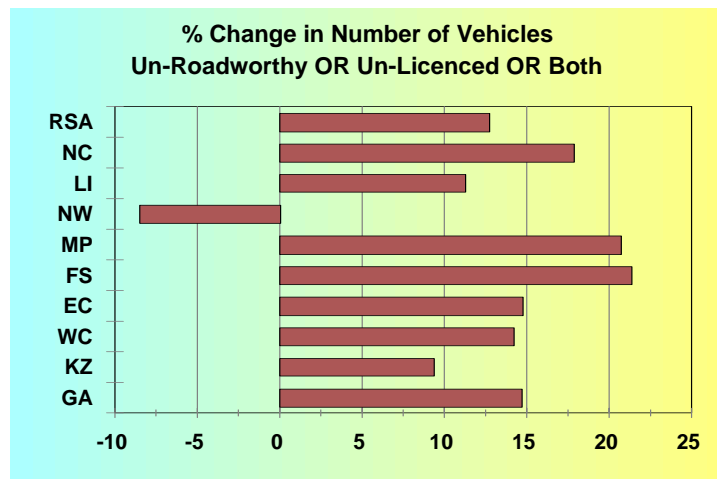
On a Provincial percentage basis the biggest increase was in the Free State where the number of un-roadworthy and un-licensed vehicles increased by 7,237 (21,34%)

from 33,917 vehicles in 2004 to 41,154 vehicles at the end of December 2005, followed by Mpumalanga with an increase of 8,078 (20,64%) from 39,134 vehicles at the end of 2004 to 47,212 vehicles at the end of 2005. In Gauteng the number of un-roadworthy and un-licenced vehicles increased by 32,095 (14,66%) from 218,863 vehicles at the end of 2004 to 250,958 at the end of 2005. The smallest percentage increase was in KwaZulu-Natal where the number of un-roadworthy and un-licenced vehicles increased by 9,34% from 85,960 vehicles in 2004 to 93,990 vehicles at the end of December 2005.

On a vehicle type percentage basis the biggest increase was in motorcycles, which showed an increase of 17,339 (56,81%) from 30,522 at the end of December 2004 to 47,861 in 2005. The number of un-roadworthy and un-licenced motorcars increased by 36,123 (11,42%) from 316,235 in December 2004 to 352,358 in 2005. The number of un-roadworthy and un-licenced minibuses increased by 6,21% to 36,349; the number of buses increased by 7,74% to 3,464; and the increase in the number of trucks was 7,62% to 33,607. A total of 12,573 heavy trailers and 44,193 light trailers were un-roadworthy and un-licenced at the end of 2005.

Summarised information in this regard is given in the table and graphs below and detailed Provincial and vehicle type information in the tables contained under **Annexure C**.

Number of Un-Roadworthy & Un-Licensed Vehicles	Number registered Dec 2004	Number Un-Rdw & Un-Lic Dec 2004	% Un-Rdw & Un-Lic Dec 2004	Number registered Dec 2005	Number Un-Rdw & Un-Lic Dec 2005	% Un-Rdw & Un-Lic Dec 2005
Motorised Vehicles						
Motorcars	4,307,943	316,235	7.34	4,574,972	352,358	7.70
Minibuses	245,753	34,224	13.93	256,205	36,349	14.19
Buses	28,834	3,215	11.15	32,308	3,464	10.72
Motorcycles	188,320	30,522	16.21	237,556	47,861	20.15
LDV's - Bakkies	1,464,171	97,955	6.69	1,564,437	107,071	6.84
Trucks	242,436	31,227	12.88	259,651	33,607	12.94
Other & Unknown	199,782	13,361	6.69	203,662	14,425	7.08
Total Motorised	6,677,239	526,739	7.89	7,128,791	595,135	8.35
Towed Vehicles						
Caravans	107,633	8,475	7.87	107,804	8,972	8.32
Heavy Trailers	110,184	11,342	10.29	115,415	12,573	10.89
Light Trailers	564,484	39,610	7.02	599,958	44,193	7.37
Unknown	19,638	2,390	12.17	19,220	2,359	12.27
Total Towed	801,939	61,817	7.71	842,397	68,097	8.08
All Vehicles	7,479,178	588,556	7.87	7,971,187	663,232	8.32



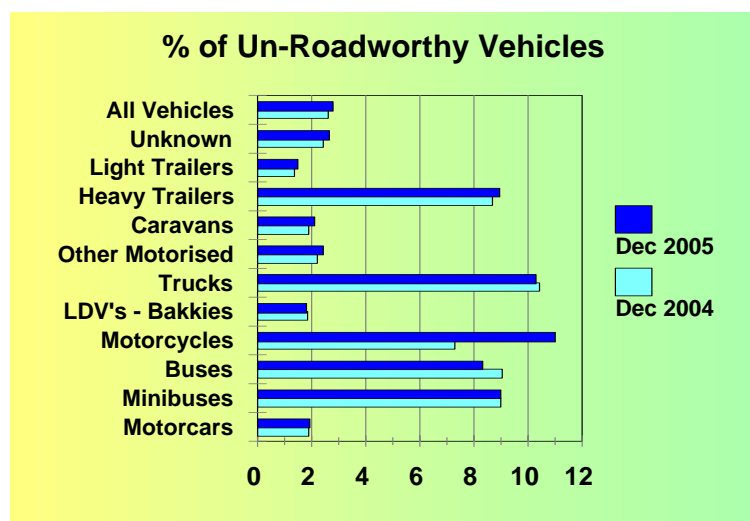
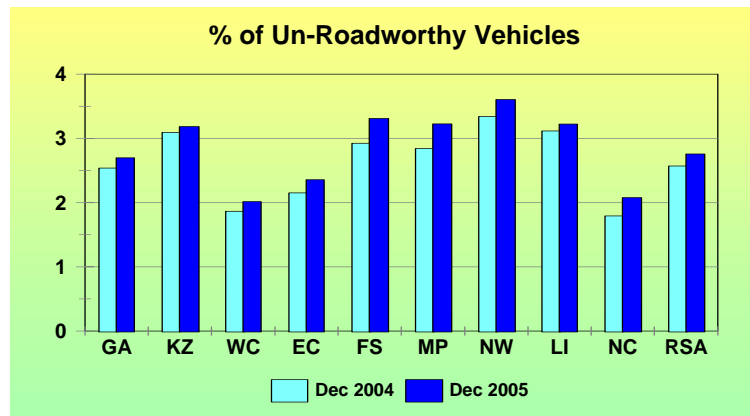
3.2 Number of Un-Roadworthy Vehicles

The number of vehicles that are un-roadworthy (but licenced) increased by 27,345 (14,23%) from 192,208 vehicles at the end of December 2004 to 219,553 vehicles at the end of December 2005. In 2004 these vehicles represented 2,57% of the total vehicle population and in 2005 it was 2,75% of the total vehicle population.

On a vehicle type percentage basis the biggest increase was in motorcycles, which showed an increase of 12,387 (90,79%) from 13,644 at the end of December 2004 to 26,031 at the end of 2005. The number of un-roadworthy motorcars increased by 8,226 (10,44%) from 78,829 in December 2004 to 87,055 at the end of 2005. The number of un-roadworthy minibuses increased by 960 (10,44%) from 21,932 to 22,892; the number of un-roadworthy buses increased by 79 (4,38%) to 2,670; and trucks increased by 1,428 (5,67%) to 26,619.

Detailed information on a Provincial basis and per vehicle type is provided in the tables under **Annexure D**.

Summarised information in this regard is given in the graphs and table below.



Number of Un-Roadworthy Vehicles	Number registered Dec 2004	Number Un-Roadworthy Dec 2004	% Un-Roadworthy Dec 2004	Number registered Dec 2005	Number Un-Roadworthy Dec 2005	% Un-Roadworthy Dec 2005
Motorised Vehicles						
Motorcars	4,307,943	78,829	1.83	4,574,972	87,055	1.90
Minibuses	245,753	21,932	8.92	256,205	22,892	8.94
Buses	28,834	2,591	8.99	32,308	2,670	8.26
Motorcycles	188,320	13,644	7.25	237,556	26,031	10.96
LDV's - Bakkies	1,464,171	26,332	1.80	1,564,437	27,807	1.78
Trucks	242,436	25,191	10.39	259,651	26,619	10.25
Other & Unknown	199,782	4,314	2.16	203,662	4,850	2.38
Total Motorised	6,677,239	172,833	2.59	7,128,791	197,924	2.78
Towed Vehicles						
Caravans	107,633	1,967	1.83	107,804	2,220	2.06
Heavy Trailers	110,184	9,539	8.66	115,415	10,290	8.92
Light Trailers	564,484	7,403	1.31	599,958	8,620	1.44
Unknown	19,638	466	2.37	19,220	499	2.60
Total Towed	801,939	19,375	2.42	842,397	21,629	2.57
All Vehicles	7,479,178	192,208	2.57	7,971,187	219,553	2.75

3.3 Number of Un-Licensed Vehicles

The number of un-licensed vehicles increased by 42,527 (11,96%) from 355,469 vehicles at the end of December 2004 to 397,993 vehicles at the end of December 2005.

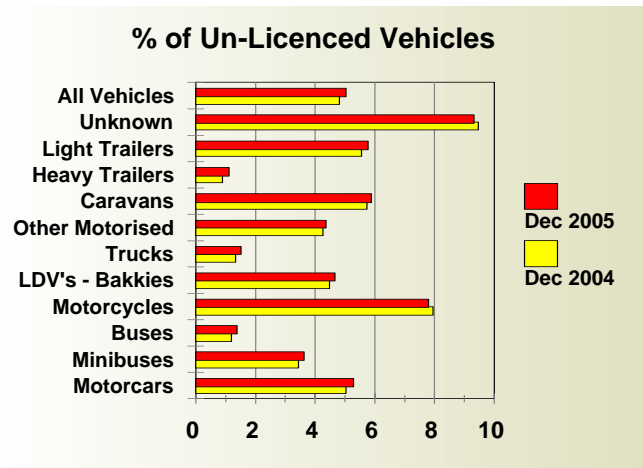
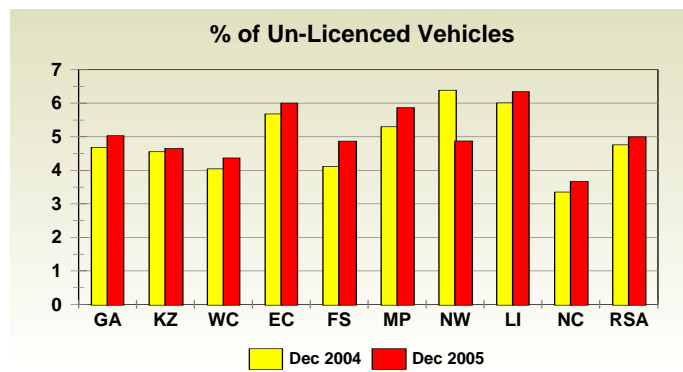
With the exception of North West, all other Provinces showed increases in the number of un-licensed vehicles. North West showed a decrease of 5,486 (20,04%) from 27,375 un-licensed vehicles in 2004 to 21,889 un-licensed vehicles at the end of December 2005. On a Provincial percentage basis the biggest increase was in the Free State where the number of un-licensed vehicles increased by 4,220 (22,60%) from 18,670 un-licensed vehicles at the end of December 2004 to 22,890 un-licensed vehicles at the end of December 2005.

On a vehicle type percentage basis the biggest increase was in the number of un-licensed heavy trailers which increased by 302 (31,39%) from 962 in 2004 to 1,264 un-licensed heavy trailers at the end of December 2005. The number of un-licensed buses increased by 99 (29,91%) to 430 in 2005; the number of un-licensed motorcycles increased by 3,608 (24,26%) to 18,481 and trucks increased by 627 (19,66%) to 3,816 in 2005.

Detailed information on a Provincial basis and per vehicle type is provided in the tables under **Annexure E**.

Summarised information in this regard is given in the table and graphs below.

Number of Un-Licensed Vehicles	Number registered Dec 2004	Number Un-Licensed Dec 2004	% Un-Licensed Dec 2004	Number registered Dec 2005	Number Un-Licensed Dec 2005	% Un-Licensed Dec 2005
Motorised Vehicles						
Motorcars	4,307,943	215,079	4.99	4,574,972	241,076	5.27
Minibuses	245,753	8,408	3.42	256,205	9,172	3.58
Buses	28,834	331	1.15	32,308	430	1.33
Motorcycles	188,320	14,873	7.90	237,556	18,481	7.78
LDV's - Bakkies	1,464,171	65,131	4.45	1,564,437	72,477	4.63
Trucks	242,436	3,189	1.32	259,651	3,816	1.47
Other & Unknown	199,782	8,418	4.21	203,662	8,835	4.34
Total Motorised	6,677,239	315,429	4.72	7,128,791	354,287	4.97
Towed Vehicles						
Caravans	107,633	6,108	5.67	107,804	6,311	5.85
Heavy Trailers	110,184	962	0.87	115,415	1,264	1.10
Light Trailers	564,484	31,120	5.51	599,958	34,351	5.73
Unknown	19,638	1,850	9.42	19,220	1,780	9.26
Total Towed	801,939	40,040	4.99	842,397	43,706	5.19
All Vehicles	7,479,178	355,469	4.75	7,971,187	397,993	4.99



3.4 Outstanding Vehicle Licence Fees

The estimated outstanding amount in vehicle licence fees for December 2005 is in the order of R 85,37 million, of which R 26,24 million is in Gauteng. The outstanding amount for motorcars is in the order of R 47,53 million and for LDV's (bakkies) in the order of R 13,22 million.

Detail in this regard per Province and type of vehicle is given in the table attached under **Annexure F**.

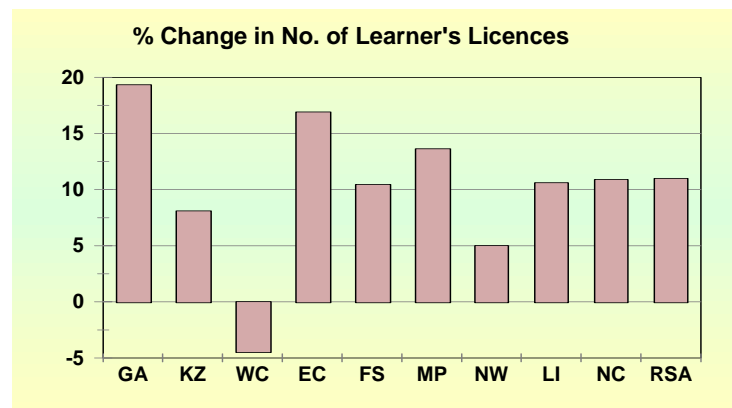
4. Number of Driving Licences and PrDP's Issued and Expired

4.1 Learners' Licences

The number of learner driving licences issued increased by 95,815 (10,98%) from 872,313 at the end of December 2004 to 968,128 at the end of December 2005. On a Provincial percentage basis the biggest increase was in Gauteng where the increase was 53,204 (19,33%) from 275,240 at the end of 2004 to 328,444 at the end of 2005. The Western Cape experienced a decrease of 4,40% from 124,989 in 2004 to 119,491 in 2005.

Learner licences for motorcycles increased by 5,410 (17,19%) from 31,472 in 2004 to 36,882 in 2005. Learner licences for light motor vehicles decreased by 9,856 (2,68%) from 367,401 to 357,545 in 2005; and for heavy motor vehicles increased by 100,261 (21,18%) from 473,440 in 2004 to 573,701 in December 2005.

Changes in this regard per Province are reflected in the graph below and detailed information per Province and type of learners' licence is given in the tables under **Annexure G**.

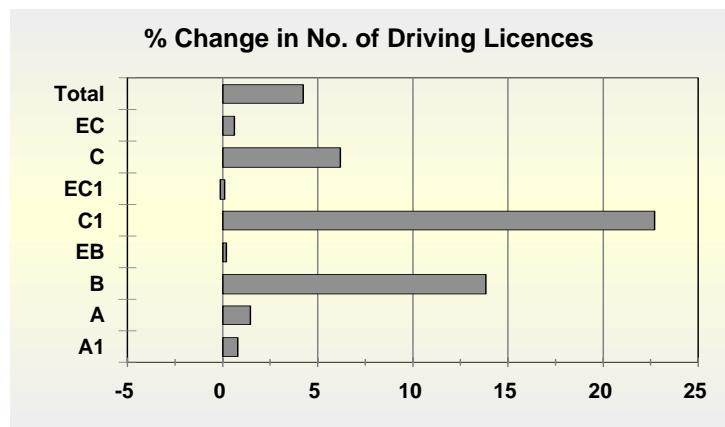
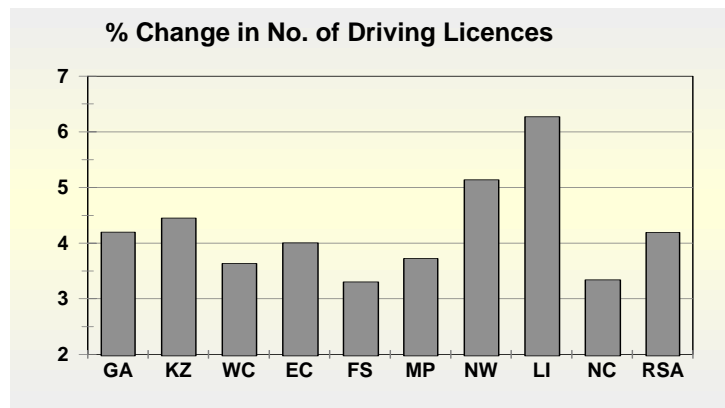


4.2 Driving Licences

The number of driving licences issued increased by 302,254 (4,19%) from 7,211,276 in December 2004 to 7,513,530 at the end of December 2005. On a Provincial percentage basis the biggest increase was in Limpopo where the number of licences issued increased by 24,440 (6,27%) from 389,849 to 414,289 at the end of 2005. On a licence type percentage basis the biggest increase was in category C1 licences (motor vehicle 3,5t to 16,0t), which increased by 150,615 (22,62%) from 665,817 in 2004 to 816,432 licences at the end of December 2005.

Summarised detail in this regard is shown in the table and graphs below and detailed information per Province and type of licence is given in the tables under **Annexure H**.

Number of Driving Licences Issued per Province										
Year	GA	KZ	WC	EC	FS	MP	NW	LI	NC	RSA
Dec 2004	2,567,370	1,154,665	1,211,700	541,012	412,356	422,426	373,685	389,849	138,213	7,211,276
Dec 2005	2,675,046	1,206,012	1,255,693	562,672	425,974	438,150	392,867	414,289	142,827	7,513,530
Change	107,676	51,347	43,993	21,660	13,618	15,724	19,182	24,440	4,614	302,254
% Change	4.19	4.45	3.63	4.00	3.30	3.72	5.13	6.27	3.34	4.19



4.3 Expired Driving Licence Cards

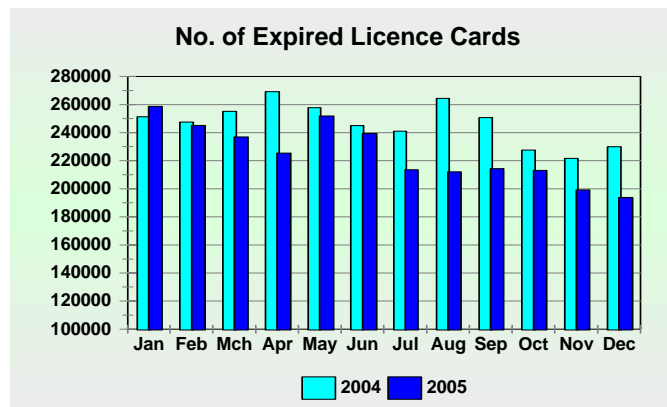
The number of driving licence cards that expired for 4 months or longer, decreased by 36,171 (15,73%) from 229,981 in 2004 to 193,810 at the end of December 2005. Detail in this regard is given in the table below.

Number of Expired Driving Licence Cardss										
Year	GA	KZ	WC	EC	FS	MP	NW	LI	NC	RSA
Dec 2004	82,486	40,636	32,485	16,008	15,052	15,253	13,097	10,886	4,078	229,981
Dec 2005	69,679	31,512	28,362	13,615	10,327	12,631	12,231	11,960	3,493	193,810
Change	-12,807	-9,124	-4,123	-2,393	-4,725	-2,622	-866	1,074	-585	-36,171
% Change	-15.53	-22.45	-12.69	-14.95	-31.39	-17.19	-6.61	9.87	-14.35	-15.73

These expired driving licence cards represent 2,58% of all licences issued. The estimated amount in outstanding fees in this regard is in the order of R 25,79 million as shown in the table below.

Dec 2005	Number of Driving Licences Issued, Expired and Outstanding Fees - Rand									
Province	GA	KZ	WC	EC	FS	MP	NW	LI	NC	RSA
Licences issued	2,675,046	1,206,012	1,255,693	562,672	425,974	438,150	392,867	414,289	142,827	7,513,530
Licences expired	69,679	31,512	28,362	13,615	10,327	12,631	12,231	11,960	3,493	193,810
% Expired	2.60	2.61	2.26	2.42	2.42	2.88	3.11	2.89	2.45	2.58
Outstanding fees	9,964,097	4,569,240	2,836,200	1,511,265	1,290,875	1,604,137	1,492,182	2,152,800	372,005	25,792,801

The number of expired driving licence cards (all categories) per month during 2004 and 2005 is shown in the graph below.



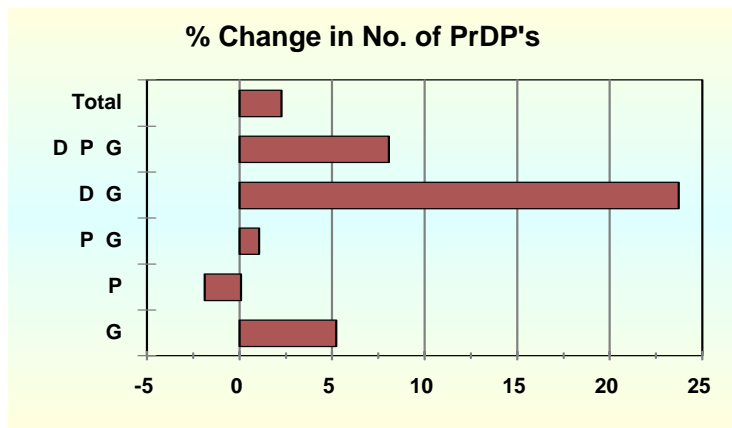
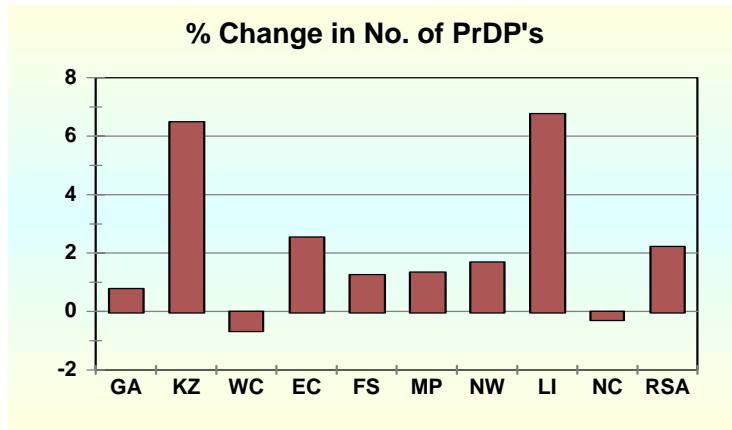
4.4 Number of Professional Driving Permits (PrDP's)

The number of PrDP's issued increased by 13,639 (2,22%) from 614,187 in 2004 to 627,826 at the end of December 2005. On a Provincial percentage basis the biggest increase was in Limpopo where the number of PrDP's increased by 3,271 (6,77%) from 48,339 in 2004 to 51,610 in 2005; followed by KwaZulu-Natal with an increase of 6,440 (6,49%) to 105,669 at the end of 2005. On a PrDP type percentage basis the biggest increase was in the D and G categories which increased by 185 (23,63%) from 783 to 968. Category P PrDP's decreased by 110 (1,86%) from 5,852 to 5,742. (P = passenger; G = goods and D = dangerous goods).

Two Provinces show decreases : the Western Cape where the number of PrDP's decreased by 557 (0,64%) from 86,868 to 86,311 in 2005 and the Northern Cape with a decrease of 39 (0,25%) from 15,819 in 2004 to 15,780 in 2005.

Summarised detail in this regard is shown in the table and graphs below and detailed information per Province and type of PrDP is given in the tables under **Annexure I**.

Number of Professional Driving Permits (PrDP's) Issued per Province										
Year	GA	KZ	WC	EC	FS	MP	NW	LI	NC	RSA
Dec 2004	182,095	99,229	86,868	46,135	43,269	53,768	38,665	48,339	15,819	614,187
Dec 2005	183,526	105,669	86,311	47,307	43,813	54,491	39,319	51,610	15,780	627,826
Change	1,431	6,440	-557	1,172	544	723	654	3,271	-39	13,639
% Change	0.79	6.49	-0.64	2.54	1.26	1.34	1.69	6.77	-0.25	2.22



4.5 Expired Professional Driving Permits (PrDP's)

The number of PrDP's that expired for 4 months or longer, increased by 8,501 (11,01%) from 77,189 in 2004 to 85,690 at the end of December 2005. Detail in this regard is given in the table below.

Number of Expired Professional Driving Permits (PrDP's)										
Year	GA	KZ	WC	EC	FS	MP	NW	LI	NC	RSA
Dec 2004	24,874	12,143	10,358	5,084	5,281	6,850	4,912	5,852	1,835	77,189
Dec 2005	25,423	14,595	11,636	6,842	5,966	6,694	5,557	6,728	2,249	85,690
Change	549	2,452	1,278	1,758	685	-156	645	876	414	8,501
% Change	2.21	20.19	12.34	34.58	12.97	-2.28	13.13	14.97	22.56	11.01

These expired PrDP's represent 13,65% of all PrDP's issued. The estimated amount in outstanding fees in this regard is in the order of R 5,77 million as shown in the table below.

Dec 2005	No. of PrDP's Issued, Expired and Outstanding Fees - Rand									
Province	GA	KZ	WC	EC	FS	MP	NW	LI	NC	RSA
PrDP's issued	183,526	105,669	86,311	47,307	43,813	54,491	39,319	51,610	15,780	627,826
PrDP's expired	25,423	14,595	11,636	6,842	5,966	6,694	5,557	6,728	2,249	85,690
% Expired	13.85	13.81	13.48	14.46	13.62	12.28	14.13	13.04	14.25	13.65
Outstanding fees	1,601,649	1,459,500	814,520	369,468	304,266	368,170	244,508	538,240	67,470	5,767,791

The number of expired PrDP's during the various months of the year is shown in the graph below.

