

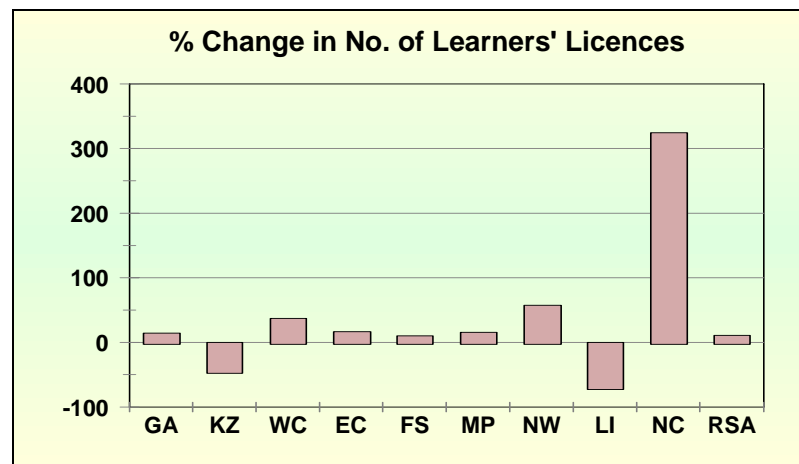
4. Number of Driving Licences and PrDP's Issued and Expired

4.1 Learners' Licences

The number of learner driving licences issued increased by 96,112 (10,84%) from 886,881 at the end of April 2005 to 982,993 at the end of April 2006. On a Provincial percentage basis the biggest increase was in the Northern Cape where the increase was 59,518 (324,37%) from 18,349 at the end of April 2005 to 77,867 at the end of April 2006. North West showed an increase of 57,30% from 75,054 to 118,062 for the same period. Limpopo experienced a decrease of 71,03% from 71,876 in 2005 to 20,819 in 2006.

Learner licences for motorcycles increased by 6,861 (21,49%) from 31,925 in 2005 to 38,786 in 2006. Learner licences for light motor vehicles decreased by 13,070 (3,66%) from 356,723 to 343,653 in 2006; and for heavy motor vehicles increased by 102,321 (20,54%) from 498,233 in 2005 to 600,554 at the end of April 2006.

Changes in this regard per Province are reflected in the graph and Tables 19 and 20 below. Detailed information per Province and type of learners' licence is given in the tables under **Annexure K**.



Year	2005				2006			
	Jan	Feb	Mch	Apr	Jan	Feb	Mch	Apr
1	31,539	31,870	31,685	31,925	37,461	38,218	38,609	38,786
2	363,525	362,568	355,864	356,723	352,057	350,113	345,869	343,653
3	475,141	482,893	486,988	498,233	574,858	584,383	593,737	600,554
Total	870,205	877,331	874,537	886,881	964,376	972,714	978,215	982,993
% Change from the same month the previous year					10.82	10.87	11.86	10.84

Table 20 : Number of Learners' Licences Issued per Province										
Year	GA	KZ	WC	EC	FS	MP	NW	LI	NC	RSA
Apr 2005	285,301	143,916	116,940	73,864	54,909	46,672	75,054	71,876	18,349	886,881
Apr 2006	326,236	78,786	160,596	86,142	60,507	53,978	118,062	20,819	77,867	982,993
Change	40,935	-65,130	43,656	12,278	5,598	7,306	43,008	-51,057	59,518	96,112
% Change	14.35	-45.26	37.33	16.62	10.20	15.65	57.30	-71.03	324.37	10.84

4.2 Driving Licences

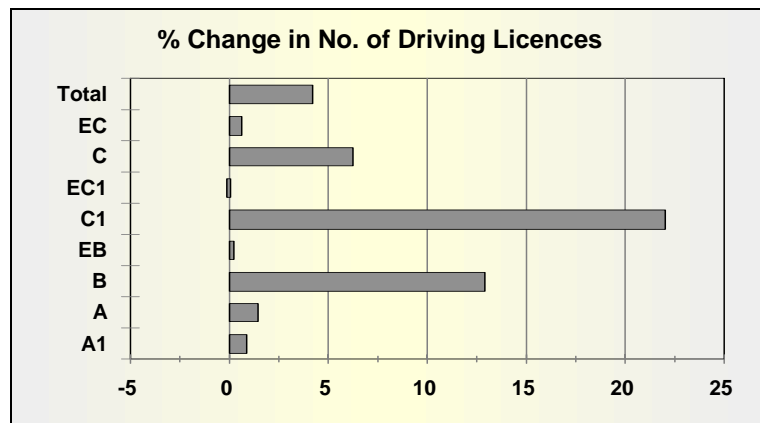
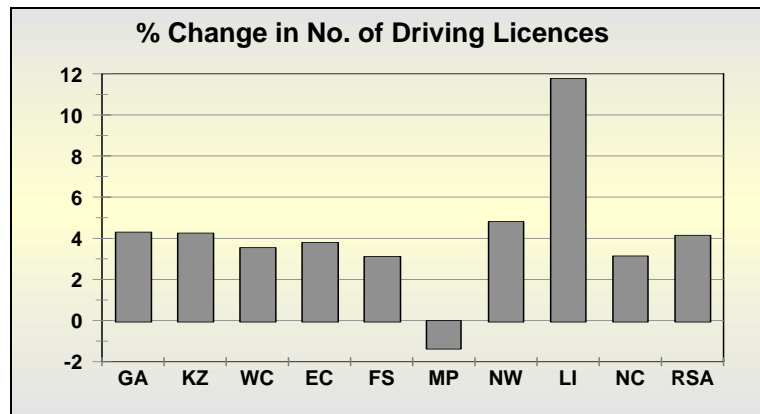
The number of driving licences issued increased by 302,861 (4,15%) from 7,305,656 at the end of April 2005 to 7,608,517 at the end of April 2006. On a Provincial percentage basis the biggest increase was in Limpopo where the number of licences issued increased by 46,721 (11,77%) from 396,845 to 443,566 at the end of April 2006.

On a licence type percentage basis the biggest increase was in category C1 licences (motor vehicle 3,5t to 16,0t), which increased by 155,630 (21,94%) from 709,333 in 2004 to 864,963 licences at the end of April 2006.

Summarised detail in this regard is shown in Tables 21 and 22 and graphs below and detailed information per Province and type of licence is given in the tables under **Annexure L**.

Table 21 : Number of Driving Licences Issued per Province										
Year	GA	KZ	WC	EC	FS	MP	NW	LI	NC	RSA
Apr 2005	2,599,243	1,171,584	1,226,060	548,380	416,568	427,172	380,052	396,845	139,752	7,305,656
Apr 2006	2,711,127	1,221,373	1,269,620	569,212	429,561	421,575	398,346	443,566	144,137	7,608,517
Change	111,884	49,789	43,560	20,832	12,993	-5,597	18,294	46,721	4,385	302,861
% Change	4.30	4.25	3.55	3.80	3.12	-1.31	4.81	11.77	3.14	4.15

Table 22 : No. of Driving Licences								
Year	2005				2006			
	Jan	Feb	Mch	Apr	Jan	Feb	Mch	Apr
A1	118,067	118,139	118,199	118,248	118,887	118,957	119,084	119,180
A	379,502	379,967	380,448	380,886	384,856	385,257	385,816	386,189
B	989,152	1,000,245	1,012,181	1,022,582	1,123,032	1,133,843	1,145,140	1,153,901
EB	3,595,860	3,596,575	3,597,155	3,597,756	3,601,532	3,602,067	3,602,602	3,602,921
C1	676,624	687,747	698,035	709,333	828,153	840,905	855,362	864,963
EC1	612,015	612,021	611,835	611,794	611,219	611,169	611,125	611,035
C	11,242	11,310	11,334	11,374	11,912	11,970	12,040	12,078
EC	852,674	853,023	853,271	853,683	857,223	857,596	858,007	858,250
Total	7,235,136	7,259,027	7,282,458	7,305,656	7,536,814	7,561,764	7,589,176	7,608,517
% Change from the same month the previous year					4.17	4.17	4.21	4.15



4.3 Expired Driving Licence Cards

The number of driving licence cards that expired for 4 months or longer, increased by 25,478 (11,30%) from 225,446 in 2005 to 250,924 at the end of April 2006. Detail in this regard is given in Table 23 below.

Table 23 : Number of Expired Driving Licence Cards										
Year	GA	KZ	WC	EC	FS	MP	NW	LI	NC	RSA
Apr 2005	79,736	40,421	33,674	14,959	14,831	14,178	12,642	10,732	4,273	225,446
Apr 2006	96,877	41,039	36,951	16,006	11,903	15,500	13,821	14,547	4,280	250,924
Change	17,141	618	3,277	1,047	-2,928	1,322	1,179	3,815	7	25,478
% Change	21.50	1.53	9.73	7.00	-19.74	9.32	9.33	35.55	0.16	11.30

The percentage of expired cards for April 2005 and 2006 per Province is shown in Table 24 below.

Table 24 : % of Expired Driving Licence Cards per Province										
Province	GA	KZ	WC	EC	FS	MP	NW	LI	NC	RSA
Apr 2005	3.07	3.45	2.75	2.73	3.56	3.32	3.33	2.70	3.06	3.09
Apr 2006	3.57	3.36	2.91	2.81	2.77	3.68	3.47	3.28	2.97	3.30

At the end of April 2006 these expired driving licence cards represented 3,30% of all licences issued. The estimated amount in outstanding fees in this regard is in the order of R 33,46 million as shown in Table 25 below.

Apr 2006	Table 25 : Number of Driving Licences Issued, Expired and Outstanding Fees - Rand									
Province	GA	KZ	WC	EC	FS	MP	NW	LI	NC	RSA
Licences issued	2,711,127	1,221,373	1,269,620	569,212	429,561	421,575	398,346	443,566	144,137	7,608,517
Licences expired	96,877	41,039	36,951	16,006	11,903	15,500	13,821	14,547	4,280	250,924
% Expired	3.57	3.36	2.91	2.81	2.77	3.68	3.47	3.28	2.97	3.30
Outstanding fees	13,853,411	5,950,655	3,695,100	1,776,666	1,487,875	1,968,500	1,686,162	2,618,460	455,820	33,492,649

4.4 Number of Professional Driving Permits (PrDP's)

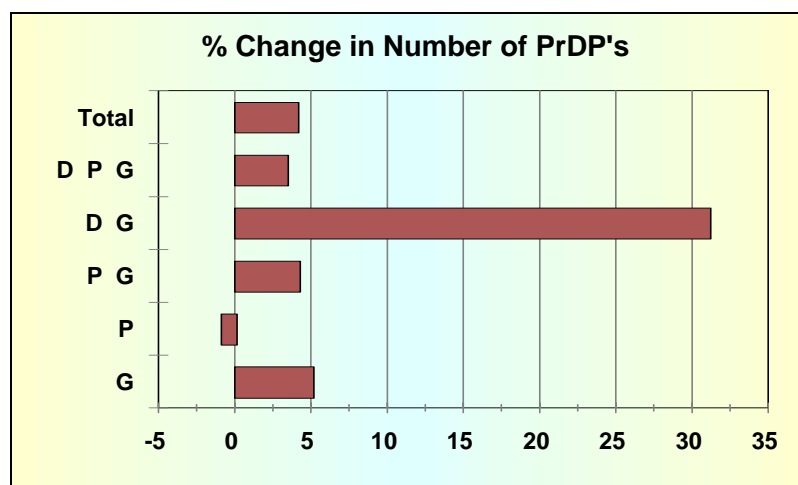
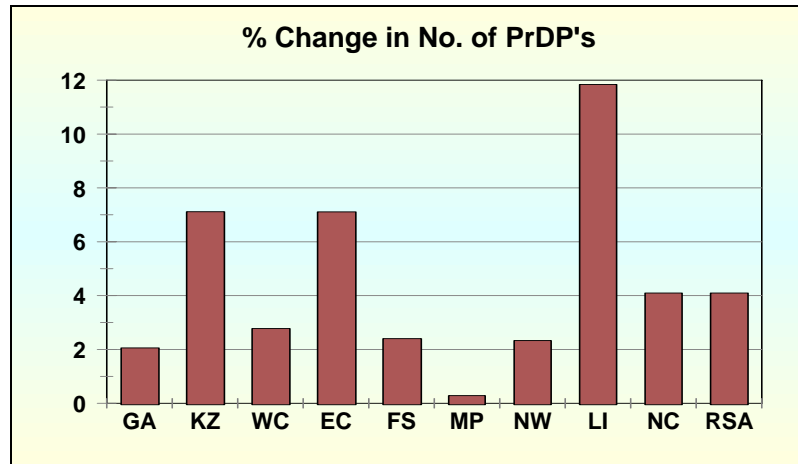
The number of PrDP's issued increased by 25,151 (4,09%) from 614,761 in 2005 to 639,912 at the end of April 2006. On a Provincial percentage basis the biggest increase was in Limpopo where the number of PrDP's increased by 5,842 (11,84%) from 49,340 in 2005 to 55,182 in 2006; followed by KwaZulu-Natal with an increase of 7,224 (7,11%) to 108,833 at the end of April 2006. On a PrDP type percentage basis the biggest increase was in the D and G categories which increased by 256 (31,14%) from 822 to 1,078. Category P PrDP's decreased by 50 (0,88%) from 5,714 to 5,664. (P = passenger; G = goods and D = dangerous goods).

The biggest increases were in Limpopo where the number of PrDP's increased by 5,842 (11,84%) from 49,340 to 55,182 in 2006 and KwaZulu-Natal with an increase of 7,224 (7,11%) from 101,609 in 2005 to 108,833 in 2006.

Summarised detail in this regard is shown in Tables 26 and 27 and graphs below and detailed information per Province and type of PrDP is given in the tables under **Annexure M**.

Table 26 : Number of Professional Driving Permits (PrDP's) Issued per Province										
Year	GA	KZ	WC	EC	FS	MP	NW	LI	NC	RSA
Apr 2005	181,673	101,609	85,130	45,886	43,519	53,293	38,835	49,340	15,476	614,761
Apr 2006	185,412	108,833	87,487	49,145	44,562	53,443	39,738	55,182	16,110	639,912
Change	3,739	7,224	2,357	3,259	1,043	150	903	5,842	634	25,151
% Change	2.06	7.11	2.77	7.10	2.40	0.28	2.33	11.84	4.10	4.09

Table 27 : No. of Professional Driving Permits (PrDPs)									
Year	2005				2006				
	Jan	Feb	Mch	Apr	Jan	Feb	Mch	Apr	
G	9,139	9,169	9,163	9,245	9,587	9,613	9,656	9,721	
P	5,767	5,702	5,676	5,714	5,677	5,706	5,605	5,664	
P G	489,536	486,797	481,170	484,814	496,955	500,416	501,642	505,428	
D G	795	811	815	822	989	1,031	1,047	1,078	
D P G	109,991	111,682	112,139	114,166	116,813	117,054	117,191	118,021	
Total	615,228	614,161	608,963	614,761	630,021	633,820	635,141	639,912	
% Change from the same month the previous year					2.40	3.20	4.30	4.09	



4.5 Expired PrDP's

The number of PrDP's that expired for 4 months or longer, decreased by 4,081 (4.48%) from 91,180 in 2005 to 87,099 at the end of April 2006. Detail in this regard is given in Table 28 below.

Year	GA	KZ	WC	EC	FS	MP	NW	LI	NC	RSA
Apr 2005	28,451	13,854	13,371	6,568	5,915	8,025	5,599	6,867	2,530	91,180
Apr 2006	26,674	14,828	11,686	6,264	5,976	6,887	5,649	6,997	2,138	87,099
Change	-1,777	974	-1,685	-304	61	-1,138	50	130	-392	-4,081
% Change	-6.25	7.03	-12.60	-4.63	1.03	-14.18	0.89	1.89	-15.49	-4.48

The percentage of expired cards for April 2005 and 2006 per Province is shown in Table 29 below.

Province	GA	KZ	WC	EC	FS	MP	NW	LI	NC	RSA
Apr 2005	15.66	13.63	15.71	14.31	13.59	15.06	14.42	13.92	16.35	14.83
Apr 2006	14.39	13.62	13.36	12.75	13.41	12.89	14.22	12.68	13.27	13.61

At the end of April 2006 these expired PrDP's represented 13,61% of all PrDP's issued. The estimated amount in outstanding fees in this regard is in the order of R 5,88 million as shown in Table 30 below.

Apr 2006	Table 30 : Number of Professional Driving Permits (PrDP's) Issued, Expired and Outstanding Fees - Rand									
Province	GA	KZ	WC	EC	FS	MP	NW	LI	NC	RSA
PrDP's issued	185,412	108,833	87,487	49,145	44,562	53,443	39,738	55,182	16,110	639,912
PrDP's expired	26,674	14,828	11,686	6,264	5,976	6,887	5,649	6,997	2,138	87,099
% Expired	14.39	13.62	13.36	12.75	13.41	12.89	14.22	12.68	13.27	13.61
Outstanding fees	1,680,462	1,482,800	818,020	338,256	304,776	378,785	248,556	559,760	64,140	5,875,555

5. Number of Fatal Crashes and Fatalities : January to April

Note should be taken that the figures given below is still of a preliminary nature and is subject to possible change, particularly those for March and April 2006.

5.1 Number of Fatal Crashes

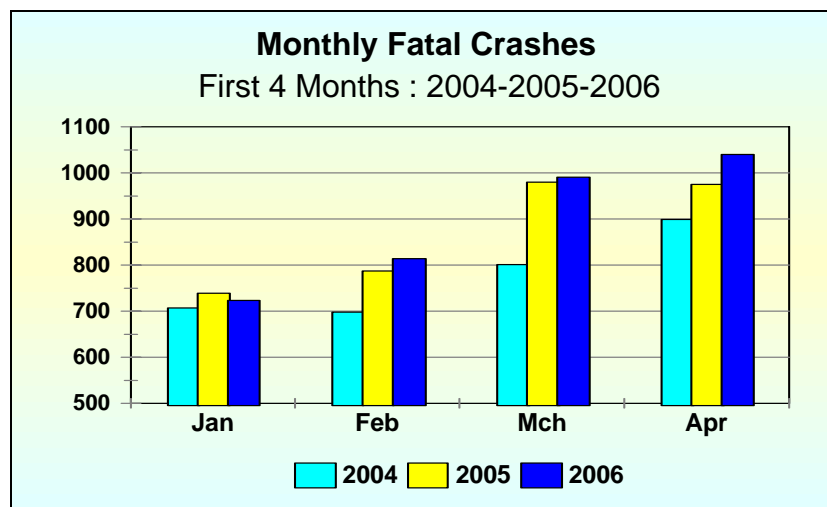
The number of fatal crashes during the first 4 months of 2006, from 1 January to 30 April 2006, increased by 87 (2,50%) from 3,481 over the same period in 2005 to 3,568. The increase from 2004 to 2005 for this 4-month period was 376 (12,11%). Provincial information in this regard is given in Table 31 below. The biggest increase was in North West (19,03%); followed by the Eastern Cape (15,41%) and Limpopo (11,70%). Four Provinces showed decreases. The Northern Cape recorded the biggest decrease, namely 8,99%. Gauteng remained unchanged.

Table 31 : Fatal Crashes : First 4 Months Jan to Apr : 2004-2005-2006										
Year	GA	KZ	WC	EC	FS	MP	NW	LI	NC	RSA
2004	678	665	366	272	233	281	258	259	93	3,105
2005	806	727	431	331	253	315	247	282	89	3,481
2006	806	718	394	382	231	347	294	315	81	3,568
Change										
2004-2005	128	62	65	59	20	34	-11	23	-4	376
2005-2006	0	-9	-37	51	-22	32	47	33	-8	87
% Change										
2004-2005	18.88	9.32	17.76	21.69	8.58	12.10	-4.26	8.88	-4.30	12.11
2005-2006	0.00	-1.24	-8.58	15.41	-8.70	10.16	19.03	11.70	-8.99	2.50

Information on the monthly number of fatal crashes is given in Tables 32 and 33 and reflected in the graph below.

Table 32 : Monthly Fatal Crashes : First 4 Months : 2004-2005-2006										
Year	GA	KZ	WC	EC	FS	MP	NW	LI	NC	RSA
2004										
Jan	146	139	83	67	56	69	68	58	21	707
Feb	149	153	89	66	40	59	58	61	23	698
Mch	187	170	85	69	70	78	58	58	26	801
Apr	196	203	109	70	67	75	74	82	23	899
2005										
Jan	160	144	89	78	54	68	58	62	26	739
Feb	192	174	91	55	65	75	61	55	19	787
Mch	235	197	128	102	64	83	66	81	24	980
Apr	219	212	123	96	70	89	62	84	20	975
2006										
Jan	163	139	95	86	45	66	54	56	19	723
Feb	201	152	81	96	54	78	59	69	24	814
Mch	243	195	113	103	57	100	80	82	18	991
Apr	199	232	105	97	75	103	101	108	20	1,040

Table 33 : % Change in Monthly Fatal Crashes : First 4 Months : 2004-2005-2006										
Year	GA	KZ	WC	EC	FS	MP	NW	LI	NC	RSA
2004-2005										
Jan	9.59	3.60	7.23	16.42	-3.57	-1.45	-14.71	6.90	23.81	4.53
Feb	28.86	13.73	2.25	-16.67	62.50	27.12	5.17	-9.84	-17.39	12.75
Mch	25.67	15.88	50.59	47.83	-8.57	6.41	13.79	39.66	-7.69	22.35
Apr	11.73	4.43	12.84	37.14	4.48	18.67	-16.22	2.44	-13.04	8.45
2005-2006										
Jan	1.88	-3.47	6.74	10.26	-16.67	-2.94	-6.90	-9.68	-26.92	-2.17
Feb	4.69	-12.64	-10.99	74.55	-16.92	4.00	-3.28	25.45	26.32	3.43
Mch	3.40	-1.02	-11.72	0.98	-10.94	20.48	21.21	1.23	-25.00	1.12
Apr	-9.13	9.43	-14.63	1.04	7.14	15.73	62.90	28.57	0.00	6.67



The information on the number of fatal crashes given above shows that for the month of:

January : the number of fatal crashes decreased by 2,17% from 739 in 2005 to 723 in 2006;

February : showed an increase of 3,43% from 787 to 814 in 2006;

March : increased by 1,12% from 980 in 2005 to 991; and

April : with 2 long weekends, increased by 6,67% from 975 to 1,040 in 2006.

5.2 Number of Fatalities

5.2.1 The number of fatalities during the first 4 months of 2006, from 1 January to 30 April 2006, increased by 319 (7,56%) from 4,218 over the same period in 2005 to 4,537. The increase from 2004 to 2005 for this 4-month period was 509 (13,72%) from 3,709 to 4,218. Provincial information in this regard is given in Table 34 below. The biggest increase was in North West (25,09%); followed by Mpumalanga (17,25%); Eastern Cape (14,16%) and Limpopo (12,04%). Only two Provinces

recorded decreases in the number of fatalities : the Northern Cape showed a decrease of 4,55% and the Western Cape 3,68%.

Table 34 : Fatalities : First 4 Months Jan to Apr : 2004-2005-2006										
Year	GA	KZ	WC	EC	FS	MP	NW	LI	NC	RSA
2004	768	783	410	343	312	369	300	297	127	3,709
2005	924	817	513	409	333	437	301	368	115	4,218
2006	967	861	494	467	335	513	377	413	109	4,537
Change										
2004-2005	157	34	103	66	20	68	1	71	-12	509
2005-2006	43	44	-19	58	2	75	76	44	-5	319
% Change										
2004-2005	20.41	4.37	25.06	19.33	6.50	18.52	0.48	24.01	-9.79	13.72
2005-2006	4.65	5.42	-3.68	14.16	0.75	17.25	25.09	12.04	-4.55	7.56

Information on the monthly number of fatalities is given in Table 35 and the percentage annual change from 2004 to 2005 and from 2005 to 2006 in Table 36 below.

Table 35 : Monthly Fatalities : First 4 Months : 2004-2005-2006										
Fatalities	GA	KZ	WC	EC	FS	MP	NW	LI	NC	RSA
2004										
Jan	160	180	107	91	85	100	83	69	21	897
Feb	172	184	95	76	47	87	66	67	26	820
Mch	208	196	93	81	96	90	67	71	51	953
Apr	227	222	115	94	84	93	84	90	29	1,039
2005										
Jan	179	161	110	100	80	97	86	85	31	930
Feb	215	185	111	73	73	118	72	63	21	931
Mch	261	221	151	118	83	105	74	106	40	1,159
Apr	270	250	141	117	96	118	69	115	22	1,198
2006										
Jan	189	166	112	102	64	82	66	66	25	872
Feb	229	184	95	116	96	112	75	97	26	1,031
Mch	281	226	160	129	70	142	112	111	26	1,258
Apr	268	284	128	120	104	177	124	139	33	1,377

Table 36 : % Change in Monthly Fatalities : First 4 Months : 2004-2005-2006										
Year	GA	KZ	WC	EC	FS	MP	NW	LI	NC	RSA
2004-2005										
Jan	11.65	-10.64	3.37	9.28	-4.88	-3.28	3.61	22.85	49.60	3.73
Feb	24.98	0.49	16.06	-3.81	54.69	35.84	9.37	-6.37	-16.85	13.51
Mch	25.18	12.69	62.39	46.53	-13.80	16.69	10.82	48.76	-21.51	21.58
Apr	18.75	12.43	22.48	24.43	14.01	27.56	-17.86	27.91	-25.76	15.31
2005-2006										
Jan	5.41	3.33	1.50	2.01	-20.35	-14.98	-23.75	-23.05	-19.36	-6.26
Feb	6.89	-0.73	-14.28	58.31	31.87	-4.62	4.03	54.56	20.92	10.71
Mch	7.92	2.54	5.88	8.66	-15.30	35.23	51.42	5.15	-35.71	8.55
Apr	-0.80	13.89	-9.63	2.46	8.53	49.41	79.64	21.29	48.96	14.90

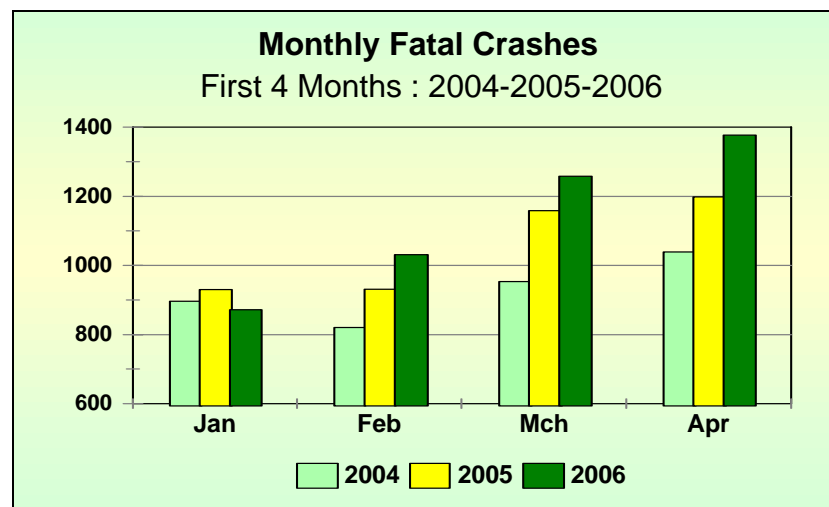
The information on the number of fatalities given above shows that for the month of: *January* : the number of fatalities decreased by 6,26% from 930 in 2005 to 872 in 2006;

February : showed an increase of 10,71% from 931 to 1,031 in 2006;

March : increased by 8,55% from 1,159 in 2005 to 1,258; and

April : with 2 long weekends, increased by 14,90% from 1,198 to 1,377 in 2006.

The above information is also reflected in the graph below.



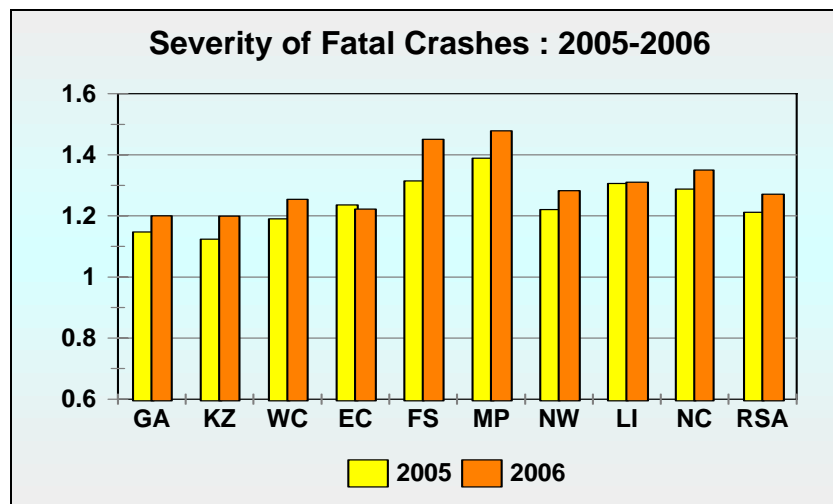
5.2.2 The fatality rates or severity of fatal crashes (the average number of persons killed per crash) over the past three years is shown in Table 37 below. This rate is, amongst others contributed to by the speed at which crashes happen, the higher the speed the more persons are killed or seriously injured, and the non-wearing rate of seatbelts, the more passengers not wearing seatbelts the more are killed or seriously injured.

Table 37 : Fatality Rates (severity) : First 4 Months Jan to Apr : 2004-2005-2006										
Year	GA	KZ	WC	EC	FS	MP	NW	LI	NC	RSA
2004	1.13	1.18	1.12	1.26	1.34	1.31	1.16	1.15	1.37	1.19
2005	1.15	1.12	1.19	1.24	1.31	1.39	1.22	1.31	1.29	1.21
2006	1.20	1.20	1.25	1.22	1.45	1.48	1.28	1.31	1.35	1.27
Change										
2004-2005	0.01	-0.05	0.07	-0.02	-0.03	0.08	0.06	0.16	-0.08	0.02
2005-2006	0.05	0.08	0.06	-0.01	0.14	0.09	0.06	0.00	0.06	0.06
% Change										
2004-2005	1.28	-4.53	6.20	-1.94	-1.92	5.73	4.95	13.90	-5.74	1.44
2005-2006	4.65	6.74	5.37	-1.08	10.34	6.43	5.09	0.31	4.88	4.94

The information in Table 37 above shows that the national fatality rate increased by 0,06 (4,94%) from a rate of 1,21 in 2005 to a rate of 1,27 in 2006. The biggest Provincial increases from 2005 to 2006 were recorded in the Free State (10,34%);

KwaZulu-Natal (6,74%); Mpumalanga (6,43%) and the Western Cape (5,37%). Only the Eastern Cape recorded a decrease, 1,08%.

The above information is also reflected in the graph below.



5.2.3 The number of fatalities per road user group is given in Table 38 below.

Table 38 : Number of User Group Fatalities : First 4 Months : 2004-2005-2006										
Fatalities	GA	KZ	WC	EC	FS	MP	NW	LI	NC	RSA
2004										
Driver	234	163	112	87	99	99	88	87	42	1,012
Passenger	174	231	105	123	130	156	80	85	54	1,138
Pedestrian	359	388	193	132	83	114	132	124	32	1,558
Total	768	783	410	343	312	369	300	297	127	3,709
2005										
Driver	266	177	158	101	134	118	96	101	34	1,185
Passenger	206	191	148	148	111	175	92	156	50	1,277
Pedestrian	452	449	207	161	87	144	113	111	31	1,756
Total	924	817	513	409	333	437	301	368	115	4,218
2006										
Driver	300	172	177	82	115	140	129	110	30	1,254
Passenger	256	284	144	177	159	249	119	174	54	1,616
Pedestrian	412	405	174	208	61	124	128	129	26	1,667
Total	967	861	494	467	335	513	377	413	109	4,537
% Change 2004-2005										
Driver	13.56	8.69	40.67	15.14	36.00	19.43	9.28	15.09	-19.45	17.07
Passenger	18.50	-17.45	41.40	20.12	-14.96	12.31	14.73	82.96	-7.12	12.17
Pedestrian	25.79	15.52	7.15	21.35	5.16	26.27	-14.03	-10.23	-1.60	12.67
Total	20.41	4.37	25.06	19.33	6.50	18.52	0.48	24.01	-9.79	13.72
% Change 2005-2006										
Driver	12.56	-3.07	12.10	-18.96	-14.29	18.38	34.48	8.98	-11.96	5.80
Passenger	23.99	48.96	-2.97	20.07	43.54	41.82	30.13	11.52	7.60	26.56
Pedestrian	-8.83	-9.71	-16.19	29.46	-30.48	-13.71	13.05	15.54	-15.92	-5.06
Total	4.65	5.42	-3.68	14.16	0.75	17.25	25.09	12.04	-4.55	7.56

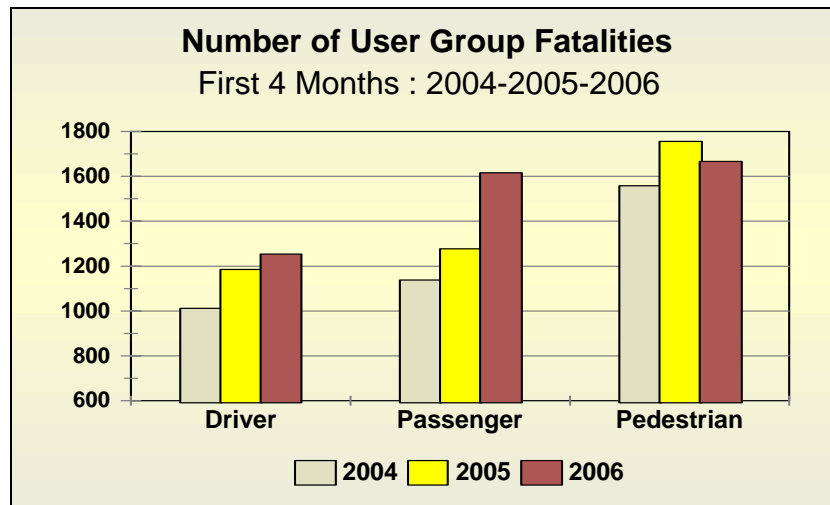
The information in Table 38 above shows that, over the 4-month period from January to the end of April 2006:

The number of *driver fatalities* increased by 5,80% from 1,185 in 2005 to 1,254 in 2006;

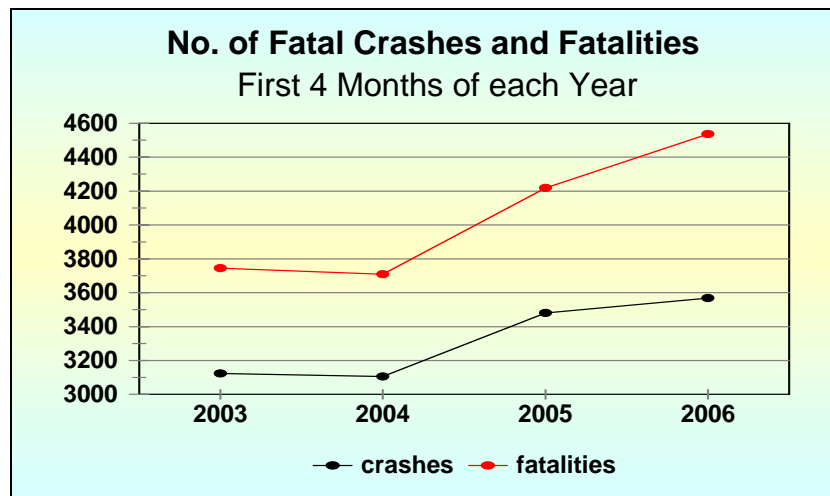
The number of *passenger fatalities* increased by 26,6% from 1,277 to 1,616 in 2006; and

The number of *pedestrian fatalities* decreased by 5,06% from 1,756 to 1,667 in 2006.

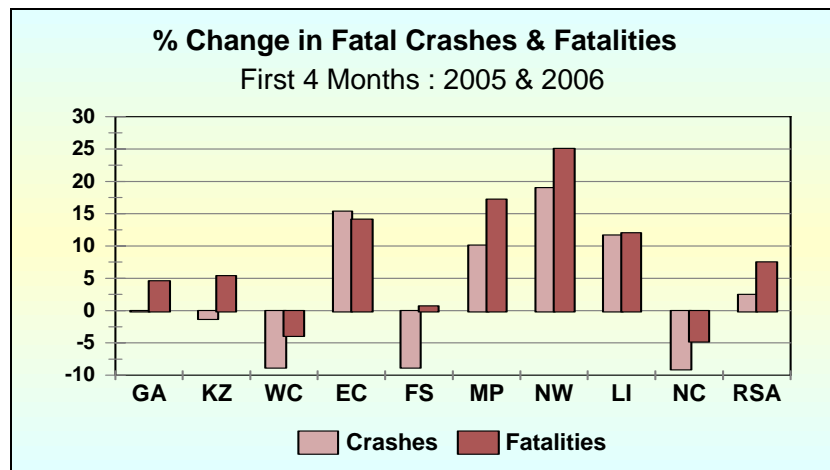
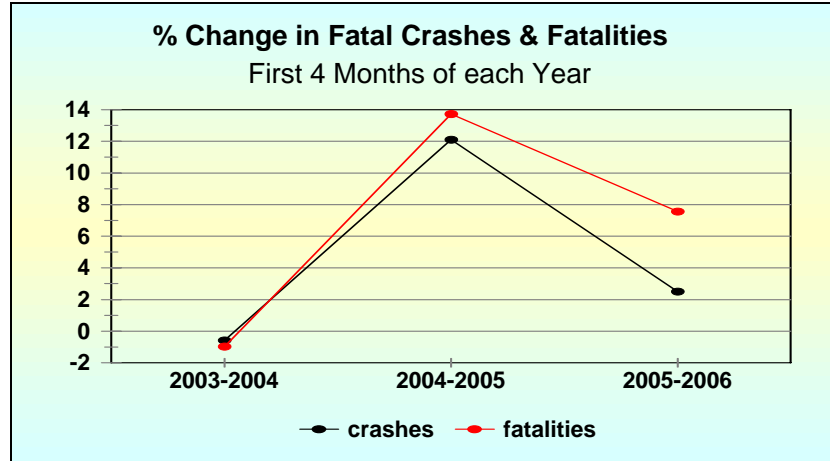
The above information is also reflected in the graph below.



5.2.4 The combined number of fatal crashes and fatalities over the first 4 months from January to the end of April as discussed above, for the years from 2003 to 2006, is reflected in the graph below.



5.2.5 The percentage (%) change in the number of fatal crashes and fatalities over the first 4-month period from 2003-2004; 2004-2005 and 2005-2006 and on a Provincial basis from 2005 to 2006, are shown in the two graphs below.



5.3 Crash and Fatality Rates per 100 Million.Vehicle.Kilometres

5.3.1 The estimated distance travelled during the first three months of each year from 2004 to 2006 per Province is shown in Table 39 below.

Table 39 : Est. Distance Travelled : First 3 Months : 2004-2005-2006 : Mil-Veh-Kms										
Year	GA	KZ	WC	EC	FS	MP	NW	LI	NC	RSA
2004	10,216	4,725	4,647	2,173	1,739	2,108	1,717	1,594	699	29,618
2005	10,449	4,931	4,835	2,276	1,765	2,368	1,789	1,512	677	30,601
2006	10,686	4,836	4,867	2,268	1,692	2,299	1,755	1,476	715	30,593
Change										
2004-2005	232	206	188	103	26	261	72	-83	-22	983
2005-2006	237	-95	32	-7	-73	-70	-34	-36	37	-9
% Change										
2004-2005	2.27	4.36	4.05	4.72	1.49	12.36	4.17	-5.18	-3.08	3.32
2005-2006	2.27	-1.92	0.66	-0.32	-4.14	-2.94	-1.89	-2.38	5.52	-0.03

In this regard information is available only for the first three months because information on the distance travelled during April 2006 will only become available towards the middle of June 2006.

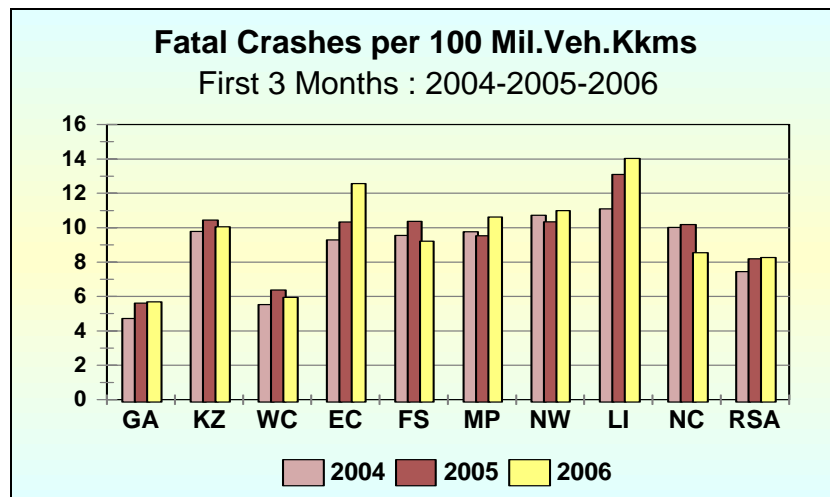
The information in Table 39 above shows that there was a decrease in travel of 9 million-vehicle-kilometres (mvk) (0,03%) over the 3-month period from 2005 to 2006. (This decrease also reflects the decrease in fuel sales over the same period). Six (6) Provinces experienced a decrease in travel.

5.3.2 The fatal crash rate in terms of distance travelled, number of crashes per 100mvk, from 2004 to 2006 is shown in Table 40 below.

Table 40 : Estimated Number of Fatal Crashes per 100 Mil-Veh-Kms										
Year	GA	KZ	WC	EC	FS	MP	NW	LI	NC	RSA
2004	4.72	9.78	5.53	9.30	9.55	9.77	10.72	11.10	10.02	7.45
2005	5.62	10.44	6.37	10.33	10.37	9.54	10.34	13.10	10.19	8.19
2006	5.68	10.05	5.94	12.56	9.22	10.61	11.00	14.03	8.54	8.26
Change										
2004-2005	0.90	0.67	0.84	1.03	0.82	-0.23	-0.37	1.99	0.17	0.74
2005-2006	0.06	-0.40	-0.43	2.24	-1.15	1.07	0.65	0.93	-1.65	0.07
% Change										
2004-2005	19.08	6.81	15.18	11.09	8.62	-2.36	-3.48	17.97	1.71	9.95
2005-2006	1.12	-3.78	-6.78	21.66	-11.08	11.24	6.33	7.10	-16.22	0.91

The national rate increased by 0,07 (0,91%) from 8,19 in 2005 to rate of 8,26 in 2006. Five Provinces recorded increases : Gauteng, Eastern Cape, Mpumalanga, North West and Limpopo. On a Provincial basis the biggest increase was recorded in the Eastern Cape where the rate increased by 21,66% from a rate of 10,33 in 2005 to a rate of 12,56; followed by Mpumalanga where the rate increased by 11,24% from 9,54 in 2005 to a rate of 10,61 fatal crashes per 100mvk in 2006.

The above information is also reflected in the graph below.

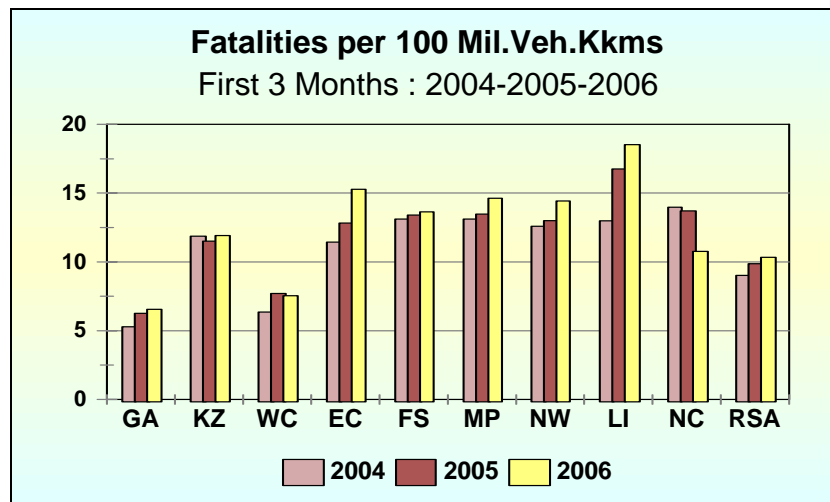


5.3.3 The fatality rate in terms of distance travelled, the number of fatalities per 100 million-vehicle-kilometres (mvk), from 2004 to 2006 is shown in Table 41 below.

Table 41 : Estimated Number of Fatalities per 100 Mil-Veh-Kms										
Year	GA	KZ	WC	EC	FS	MP	NW	LI	NC	RSA
2004	5.29	11.86	6.35	11.43	13.10	13.11	12.58	12.99	13.98	9.01
2005	6.26	11.50	7.70	12.82	13.39	13.48	13.00	16.76	13.70	9.87
2006	6.55	11.93	7.54	15.28	13.63	14.63	14.42	18.52	10.76	10.33
Change										
2004-2005	0.97	-0.36	1.34	1.38	0.29	0.37	0.42	3.77	-0.28	0.85
2005-2006	0.28	0.42	-0.16	2.47	0.24	1.15	1.43	1.76	-2.94	0.46
% Change										
2004-2005	18.41	-3.05	21.16	12.09	2.19	2.79	3.30	28.99	-1.97	9.47
2005-2006	4.53	3.69	-2.06	19.25	1.79	8.54	10.98	10.48	-21.47	4.68

The national rate in this regard increased by 0,46 (4,68%) from 9,87 in 2005 to rate of 10,33 persons killed per 100 mvk in 2006. Seven (7) Provinces recorded increases, of which the Eastern Cape, North West and Limpopo recorded increases of more than 10%. In the Eastern Cape the rate increased by 19,25% from 1,82 in 2005 to a rate of 15,28 in 2006. In North West the rate increased by 10,98% from 13,00 to 14,42 and in Limpopo the rate increased by 10,48% from 16,76 in 2005 to rate of 18,52 persons killed per 100mvk in 2006. For the past 2 years Limpopo maintained the highest rate in this regard.

The above information is also reflected in the graph below.

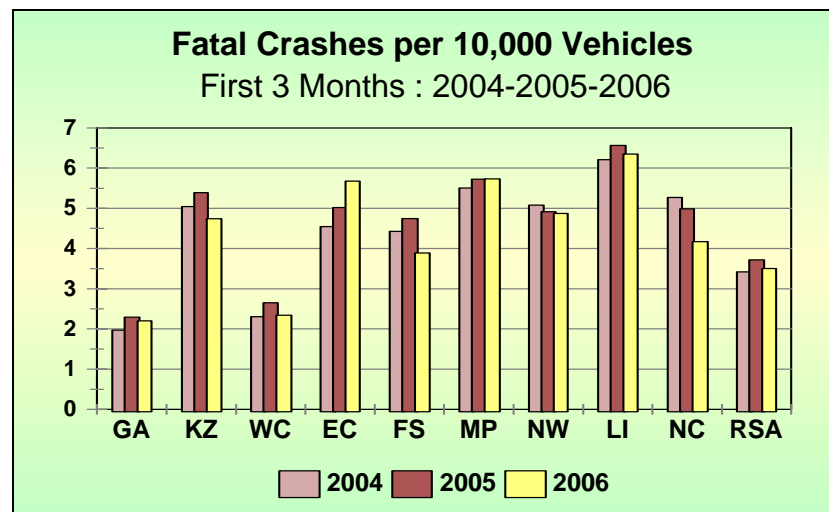


5.4 Crash and Fatality Rates per 10,000 Motorised Vehicles

5.4.1 The estimated number of fatal crashes in terms of the number of registered motorised vehicles per Province is shown in Table 42 below.

Table 42 : Estimated Number of Fatal Crashes per 10,000 Motorised Vehicles										
Year	GA	KZ	WC	EC	FS	MP	NW	LI	NC	RSA
2004	1.97	5.04	2.31	4.54	4.42	5.51	5.08	6.21	5.27	3.42
2005	2.29	5.39	2.65	5.02	4.75	5.72	4.92	6.57	4.99	3.72
2006	2.20	4.74	2.34	5.68	3.89	5.73	4.87	6.35	4.18	3.51
Change										
2004-2005	0.32	0.35	0.35	0.47	0.32	0.22	-0.17	0.36	-0.28	0.30
2005-2006	-0.09	-0.65	-0.31	0.66	-0.86	0.01	-0.05	-0.21	-0.81	-0.21
% Change										
2004-2005	16.40	6.94	15.03	10.41	7.26	3.94	-3.27	5.74	-5.36	8.71
2005-2006	-3.84	-12.03	-11.79	13.14	-18.11	0.10	-0.96	-3.25	-16.28	-5.69

The information in the Table above shows that the national rate in this regard decreased by 0,21 (5,69%) from 3,72 in 2005 to rate of 3,51 fatal crashes per 10,000 motorised vehicles in 2006. With the exception of two, all other Provinces recorded decreases in this regard. The biggest decrease was recorded in the Free State where the rate decreased by 18,11% followed by the Northern Cape with a decrease of 16,28%. The Eastern Cape showed an increase of 13,14% and Mpumalanga an increase of 0,10%. The above information is also reflected in the graph below.

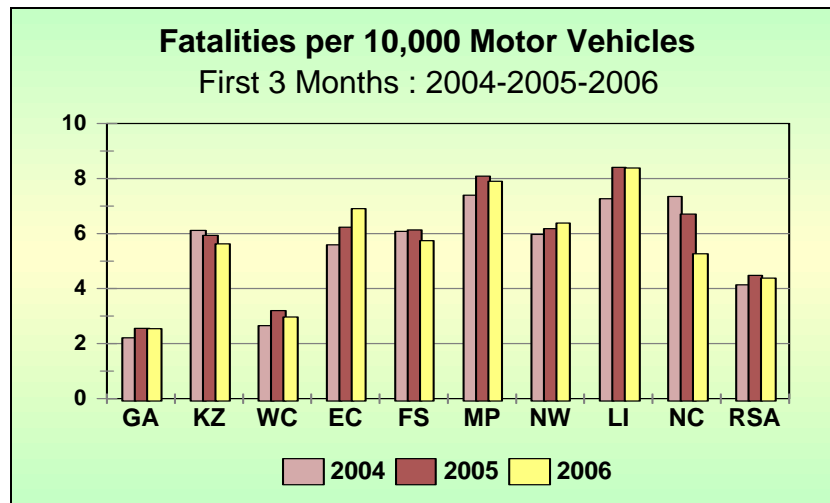


5.4.2 The estimated number of fatalities in terms of the number of registered motorised vehicles per Province is shown in Table 43 below.

Table 43 : Estimated Number of Fatalities per 10,000 Motorised Vehicles										
Year	GA	KZ	WC	EC	FS	MP	NW	LI	NC	RSA
2004	2.21	6.12	2.65	5.59	6.07	7.39	5.97	7.27	7.35	4.14
2005	2.56	5.94	3.20	6.23	6.13	8.09	6.18	8.40	6.71	4.48
2006	2.54	5.63	2.97	6.91	5.75	7.90	6.39	8.39	5.26	4.38
Change										
2004-2005	0.35	-0.18	0.56	0.64	0.06	0.70	0.21	1.14	-0.65	0.34
2005-2006	-0.02	-0.31	-0.23	0.68	-0.38	-0.19	0.21	-0.02	-1.44	-0.10
% Change										
2004-2005	15.75	-2.93	21.00	11.41	0.91	9.42	3.52	15.62	-8.78	8.24
2005-2006	-0.60	-5.20	-7.33	10.90	-6.26	-2.34	3.37	-0.19	-21.52	-2.16

The information in the Table above shows that the national rate in this regard decreased by 0,10 (2,16%) from 4,48 in 2005 to rate of 4,38 persons killed per 10,000 registered motorised vehicles in 2006. With the exception of two, all other Provinces recorded decreases in this regard. The biggest decrease was recorded in the Northern Cape where the rate decreased by 21,52% followed by the Western Cape with a decrease of 7,33%. The Eastern Cape showed an increase of 10,90% and North West an increase of 0,21 (3,37%), from a rate of 6,18 to a rate of 6,39 persons killed per 10,000 registered motorised vehicles in 2006.

The above information is also reflected in the graph below.



Detailed Provincial information on the number of fatal crashes and fatalities during the first four months of 2006, in comparison with the same period in 2003, 2004 and 2005 is given in the tables under the following Annexures:

Annexure N : Number of Monthly Fatal Crashes and Fatalities : 2003

Annexure O : Number of Monthly Fatal Crashes and Fatalities : 2004

Annexure P : Number of Monthly Fatal Crashes and Fatalities : 2005

Annexure Q : Number of Monthly Fatal Crashes and Fatalities : 2006

6. Results of the 2005 Road Traffic Offence Survey

6.1 In order to combat the occurrence of road traffic accidents and to plan and undertake road traffic safety programmes and projects, three main sources of information are required, namely **road traffic accident figures**, **contributory factors** to accidents and **road traffic offence survey** statistics.

Accident statistics provide information on the number and types of accidents and resulting fatalities, categories of vehicles involved and days and times that crashes happen; as well as rates and trends in the occurrence of crashes. Contributory factors, which are generally categorised under road user, vehicle, road and the environment, give an indication of the significance and the roles that these factors play in the causing of accidents.

Information obtained from traffic offence surveys is mainly utilised to:

- determine the general level of lawlessness on the road and street network on an annual basis;
- complement and clarify reported contributory factors to road accidents; and
- to measure the effect and impact of road safety and law-enforcement programmes and projects on the level of lawlessness and the occurrence of road accidents.

Traffic offence information includes road user offences such as speed, alcohol, the wearing rate of seatbelts and pedestrians jay-walking. Vehicle contraventions include information of smooth and damaged tyres; faulty lights, etc.

Some of the main results and findings of the 2005 survey, which gives an indication of the level of lawlessness, are briefly compared and discussed below.

6.2 In order to determine the level of lawlessness on the road, annual road traffic offence surveys are undertaken (with the exception of 2004). Since 2002 the survey was standardised so as to be comparable, as far as possible, on a year on year basis. The 2005 survey was done during the day and at night-time from September to November between Wednesday evenings and Monday afternoons to cover weekends. A total of 98,239 vehicles were involved, including 68,768 for speed and 13,084 at roadblocks for roadworthy checks. A total of 16,387 drivers were tested for alcohol of which 71,40% were drivers of light motor vehicles (motorcars and LDV's); 12,48% minibus taxis; 1,98% buses and 14,14% trucks.

The traffic offences that were surveyed and briefly discussed below included, amongst others, the following:

Pedestrians Jay-walking

Driver related offences:

- Exceeding the speed limit in urban and rural areas;
- Driving while exceeding the legal alcohol limit;
- Illegal overtaking across barrier lines;
- Ignoring red traffic signals; and
- The wearing rate of seatbelts, which influence the severity of casualties.

Vehicle related offences:

- Worn and/or smooth tyres; and
- Faulty head and rear lights.

Each of these are briefly discussed below.

6.3 Pedestrian and Driver Offences

6.3.1 Pedestrians Jay-Walking

The average number of pedestrians jay-walking per hour on rural roads increased by 657 (198,49%) from 331 in 2003 to 988 per hour in 2005. Surveys were done at locations where pedestrians dangerously crossed the road away from intersections or pedestrian crossings and where the road markings did not provide protective control. Detailed provincial information in this regard for 2003 and 2005 is given in Table 44 below.

Table 44 : Pedestrians Jay-walking : Average per Hour			
Province	2003	2005	% Change
GA	150	956	537.33
KZ	605	759	25.45
WC	282	1,158	310.64
EC	526	1,390	164.26
FS	323	1,094	238.70
MP	278	826	197.12
NW	274	566	106.57
LI	478	1,573	229.08
NC	181	715	295.03
RSA	331	988	198.49

6.3.2 Speed

Information obtained from traffic monitoring stations on national roads across the country showed that during December 2005 there was a general increase in the number of vehicles exceeding the speed limit of 120km/h on these routes in comparison with December the previous year. The percentage of vehicles

exceeding the limit over weekends was generally higher than during the other days of the week (Monday to Thursday). In December 2004 an average of 21,23% of the traffic exceeded the limit during weekdays. In December 2005 this increased to 26,50%. Detailed provincial information in this regard is given in Table 45 below.

Year	Day	GA	KZ	WC	EC	FS	MP	NW	LI	NC	RSA
2004	weekda	28.20	2.76	23.70	17.90	23.50	24.00	24.30	22.50	24.20	21.23
	weeken	29.10	4.56	26.20	18.60	27.60	29.90	26.70	27.30	26.60	24.06
2005	weekda	27.30	3.59	24.00	24.90	31.00	27.50	24.00	24.60	25.10	26.50
	weeken	29.90	6.73	27.20	32.20	29.60	35.30	28.20	28.10	28.20	30.68

The 2005 offence survey showed that, during daytime the percentage of light motor vehicles exceeding the speed limit of 60km/h on roads and streets in urban areas decreased from 61,0% in 2003 to 37,7% in 2005. The night-time percentage in 2005 was in the order of 30,4%. During daytime the percentage of light motor vehicles exceeding the speed limit of 120km/h on major rural roads increased marginally from 27,0% in 2003 to 28,0% in 2005. The night time percentage in 2005 was in the order of 19,7%.

6.3.3 Intoxicated Drivers

The percentage of drivers of light motor vehicles, driving while exceeding the legal breath alcohol limit of 0,24mg/litre, decreased by more than half, from 1,5% in 2003 to 0,7% during the daytime. The night-time percentage decreased from 5,1% in 2003 to 3,5% in 2005. Detailed provincial information is given in Table 46 below.

Province	Day (06:00-16:00)		Night (18:00-24:00)	
	2003	2005	2003	2005
GA	1.0	1.1	2.7	4.8
KZ	0.3	0.4	4.5	3.0
WC	2.8	1.0	8.1	2.2
EC	2.2	0.7	2.5	1.0
FS	0.4	0.7	4.4	3.0
MP	2.4	0.0	13.4	5.2
NW	3.0	0.3	2.9	3.0
LI	2.7	0.0	8.9	2.8
NC	2.0	0.7	4.7	3.1
RSA	1.5	0.7	5.1	3.5

The national weighted average percentage of drivers of minibus taxis, buses and trucks driving while exceeding the legal alcohol limit of 0,1mg/litre during the day and night in 2003 was 1,7%. The 2005 survey results for drivers of these vehicle categories are summarised in Table 47 below.

Table 47 : 2005 - % Drivers Exceeding the Legal Alcohol Limit						
Province	Minibus Taxis		Buses		Trucks	
	Day	Night	Day	Night	Day	Night
GA	2.2	9.1	8.4	11.1	1.8	1.6
KZ	2.8	1.6	0.0	0.0	0.8	1.0
WC	0.7	6.4	0.0	0.0	1.7	0.0
EC	2.1	8.8	0.0	0.0	0.6	2.4
FS	2.5	4.8	6.3	0.0	0.0	1.3
MP	2.3	9.8	0.0	0.0	0.0	1.6
NW	0.5	3.3	0.0	0.0	0.7	1.8
LI	2.4	4.0	0.0	0.0	0.0	3.6
NC	7.6	7.1	4.6	0.0	1.7	3.6
RSA	2.1	6.6	3.4	3.9	1.1	1.5

The information above shows an increase in the drinking and driving rate of drivers of minibus taxis to 2,1% during the day and 6,6% during the night and bus drivers to 3,4% during the day and 3,9% at night. The rate of truck drivers decreased slightly to 1,1 during the day and 1,5% during the night.

6.3.4 Overtaking Offences

Barrier line offences on rural roads decreased by 76,8%. In this regard the average of 3,3 offences per hour in 2003 reduced to an average of 0,8 offences per hour in 2005. Provincial detail is given in Table 48 below.

Table 48 : Drivers Ignoring Barrier Lines			
Province	Av. no of Offences per Hour		
	2003	2005	% Change
GA	1.6	0.0	-100.00
KZ	2.1	0.2	-91.12
WC	4.3	0.4	-91.84
EC	4.5	0.9	-80.89
FS	2.4	0.0	-100.00
MP	9.5	6.2	-34.57
NW	5.7	0.6	-90.09
LI	1.2	2.0	63.71
NC	2.6	0.0	-100.00
RSA	3.3	0.8	-76.76

6.3.5 Red Traffic Signal Offences

Information in Table 49 below shows that the percentage of drivers ignoring red traffic signals in urban areas reduced by 74,8%, from an average of 1,4 offences per phase in 2003 to an average of 0,3 offences per phase in 2005.

Table 49 : Drivers Ignoring Red Traffic Signals			
Province	Av. no of Offences per Phase		
	2003	2005	% Change
GA	1.2	0.3	-73.33
KZ	1.2	0.2	-80.83
WC	1.9	0.4	-79.47
EC	1.6	0.4	-73.13
FS	0.7	0.2	-67.14
MP	1.8	0.5	-75.00
NW	1.3	0.4	-68.46
LI	0.9	0.4	-51.11
NC	1.5	0.2	-86.67
RSA	1.4	0.3	-74.81

6.3.6 Seatbelt Wearing Rates

With regard to the non-wearing rate of seatbelts (at road blocks): drivers not wearing seatbelts increased slightly from 16,2% in 2003 to 17,2% in 2005. The percentage of front seat passengers not wearing seatbelts decreased from 37,5% in 2003 to 35,7% in 2005. Detailed information on the non-wearing o seatbelts is given in Table 50 below.

Table 50 : % Vehicle Occupants Not Wearing Seatbelts (At roadblocks)						
Province	Drivers		Front Passengers		Back Passengers	
	2003	2005	2003	2005	2003	2005
GA	17.3	15.9	39.2	32.2	98.4	99.0
KZ	16.4	15.9	40.8	34.2	93.3	97.0
WC	17.2	18.1	33.2	31.1	78.4	95.8
EC	16.3	24.1	36.1	45.1	91.2	99.5
FS	18.8	18.3	36.4	30.2	88.5	99.1
MP	11.2	17.7	36.6	60.6	92.6	97.1
NW	12.1	18.2	31.9	39.4	93.8	90.7
LI	17.4	13.4	42.1	29.9	90.3	93.0
NC	13.1	21.5	31.9	31.0	89.0	99.6
RSA	16.2	17.2	37.5	35.7	92.0	97.3

6.4 Vehicle Contraventions

6.4.1 Smooth and Damaged Tyres

Information given in Table 51 below shows that there was a significant increase in the percentage of vehicles on the road with smooth or damaged tyres. The percentage of light motor vehicles increased from 9,0% to 16,0%; minibus taxis increased from 11,0% to 25,0%; buses from 5,0% to 17,0% and trucks from 20,0% in 2003 to 29,0% in 2005.

Table 51 : % Motor Vehicles with at least 1 Smooth or Damaged Tyre								
Province	Light Motor Vehicles		Minibus Taxis		Buses		Trucks	
	2003	2005	2003	2005	2003	2005	2003	2005
GA	8.0	14.0	11.0	23.0	2.0	19.0	21.0	27.0
KZ	7.0	20.0	9.0	24.0	7.0	22.0	23.0	32.0
WC	9.0	19.0	10.0	29.0	7.0	12.0	25.0	31.0
EC	13.0	17.0	8.0	23.0	5.0	18.0	19.0	27.0
FS	9.0	15.0	14.0	27.0	5.0	20.0	13.0	30.0
MP	6.0	9.0	14.0	20.0	7.0	3.0	18.0	22.0
NW	11.0	15.0	11.0	28.0	5.0	13.0	17.0	38.0
LI	9.0	16.0	13.0	27.0	5.0	30.0	19.0	27.0
NC	11.0	18.0	14.0	27.0	10.0	18.0	0.0	37.0
RSA	9.0	16.0	11.0	25.0	5.0	17.0	20.0	29.0

6.4.2 Faulty Vehicle Lights

The information in Table 52 below reflects the percentage of vehicles per category with faulty headlights, in which case at least one main beam in the dipped position is not functioning.

Table 52 : % Vehicles with Faulty Front Lights : Main Beam Dipped								
Province	Light Motor Vehicles		Minibus Taxis		Buses		Trucks	
	2003	2005	2003	2005	2003	2005	2003	2005
GA	2.2	5.3	5.0	8.2	3.1	2.7	2.4	8.2
KZ	0.7	5.4	5.9	5.0	0.0	3.7	1.1	5.0
WC	1.6	5.3	4.7	10.5	0.0	10.3	1.5	10.5
EC	2.0	6.6	3.3	8.9	0.0	2.6	2.4	8.9
FS	3.1	6.7	4.5	14.9	0.0	12.8	1.1	14.9
MP	3.2	1.9	3.4	3.5	2.4	3.0	3.5	3.5
NW	4.4	7.0	11.0	12.4	3.1	3.3	4.3	12.4
LI	2.8	9.0	6.3	12.7	0.0	11.6	2.8	12.7
NC	3.1	5.7	4.8	11.9	1.7	7.9	3.8	11.9
RSA	2.1	6.0	5.3	9.0	1.4	5.0	2.2	9.0

The information in Table 52 above indicates, amongst others, an increase from 2,1% to 6,0% in light motor vehicles with faulty head lights. The percentage trucks in this regard increased from 2,2% in 2003 to 9,0% in 2005.

Information given in Table 53 below shows the percentage of vehicles recorded with at least one or more tail lights not functioning. The percentage of light motor vehicles increased from 2,0% in 2003 to 3,0 % in 2005. The other categories of vehicles either remained at the same percentage or show slight decreases.

Table 53 : % Vehicles with Faulty Rear Lights : Tail Light								
Province	Light Motor Vehicles		Minibus Taxis		Buses		Trucks	
	2003	2005	2003	2005	2003	2005	2003	2005
GA	0.8	1.7	3.1	2.7	3.1	0.0	3.1	2.7
KZ	2.2	1.5	1.9	1.7	1.3	0.0	5.2	1.7
WC	2.5	3.0	5.1	8.6	1.7	3.5	5.5	8.6
EC	1.9	2.9	3.6	4.3	3.2	2.6	5.9	4.3
FS	1.9	5.0	6.8	5.2	3.0	4.7	5.2	5.2
MP	3.7	2.1	2.9	0.7	3.6	0.0	4.3	0.7
NW	4.0	4.8	10.0	6.5	1.5	0.0	3.7	6.5
LI	2.3	7.2	3.2	10.6	3.7	10.1	4.1	10.6
NC	3.8	3.2	7.4	4.2	1.7	10.5	4.3	4.2
RSA	2.0	3.0	4.0	4.0	2.5	2.0	4.4	4.0

Table 54 below reflects the percentage of vehicles with faulty rear flicker lights which shows a general increase from 2003 to 2005. Light motor vehicle increased from 2,1% to 4,0% and buses increased from 1,7% to 7,0%.

Table 54 : % Vehicles with Faulty Rear Lights : Flicker Light								
Province	Light Motor Vehicles		Minibus Taxis		Buses		Trucks	
	2003	2005	2003	2005	2003	2005	2003	2005
GA	1.9	2.9	3.6	5.0	1.6	10.8	2.4	5.0
KZ	1.6	1.5	3.5	3.0	1.3	7.7	2.5	3.0
WC	2.0	7.5	4.7	9.0	0.0	1.7	1.8	9.0
EC	2.5	4.9	6.0	6.4	4.8	5.1	6.2	6.4
FS	1.9	5.9	5.4	9.5	3.0	4.7	4.4	9.5
MP	3.5	1.7	4.5	1.4	0.0	0.0	2.7	1.4
NW	1.9	4.6	4.7	7.4	0.0	6.7	2.8	7.4
LI	2.7	6.1	5.3	9.6	4.9	5.8	3.1	9.6
NC	2.6	4.5	6.7	10.5	1.7	0.0	3.8	10.5
RSA	2.1	4.0	4.4	6.0	1.7	7.0	2.9	6.0

6.4.3 Number of Vehicles with Defects

Based on the above percentages of vehicles with faulty lights and smooth or damaged tyres, the number of vehicles with defects in this regard that daily travel on the street and road network, is given in Table 55 below.

Table 55 : Number of Vehicles with Defects						
Vehicle category	Tyre Defects			Faulty Front Lights		
	2003	2005	% change	2003	2005	% change
Light motor vehicles	515,131	1,020,314	98.07	120,197	382,618	218.32
Minibus taxis	26,613	64,051	140.67	12,823	23,058	79.83
Buses	1,361	5,492	303.54	381	1,615	323.88
Trucks	67,376	108,769	61.44	7,411	33,756	355.46
Total	610,482	1,198,627	96.34	140,812	441,048	213.22

The information in the Table above, amongst others shows that:

- The estimated number of light motor vehicles with at least 1 smooth or damaged tyre increased by 98,07% from 515,131 in 2003 to 1,020,314 in 2005;
- The number of minibus taxis with at least 1 smooth or damaged tyre increased by 140,67% from 26,613 in 2003 to 64,051 in 2005;
- The number of buses with tyre defects increased by 303,54% from 1,361 in 2003 to 5,492 in 2005;
- The number of trucks with tyre defects increased by 61,44% from 67,376 in 2003 to 108,769 in 2005;
- The number of buses with faulty front lights increased by 323,88% from 381 in 2003 to 1,615 in 2005; and
- The number of trucks with faulty front lights increased by 355,46% from 7,411 in 2003 to 33,756 in 2005.

The information above reflects a generally unacceptable high number of vehicles with some of the most critical vehicle safety elements being defect. What is of even greater concern, is the high increases in this regard over the past 2 years – which clearly reflects the inability of the traffic authorities to curb the continuously deteriorating situation.

6.5 Discussion

The information from the various sources given above, compliment and support each other and shows a general breakdown in the level of law compliance amongst the road using public.

The percentage of vehicles exceeding the speed limit is unacceptable. The effect and possible consequences of high speeds are worsened by the general poor roadworthy status of a large number of vehicles on the road. During intensive research undertaken by the CSIR in South Africa from the mid 1970's to the mid 1980's, it was found that the lowering of speed limits (resulting in lower operating speeds on the rural road network) had an *overwhelming* effect on the occurrence of road accidents. A reduction in the speed limit from 120 km/h to 80 km/h during this period resulted in a decrease in the casualty crash rate (number of casualty crashes per million vehicle kilometres travel) from about 0,59 to about 0,44. It was also found that a decrease of 1 km/h in the mean or average vehicle speed in rural areas resulted in a decrease of 9 fatal accidents and 120 total accidents per month. It should be noted that during this period there were also very high levels of self-discipline and self-regulation present amongst South African road users, accompanied by a high level of law enforcement.

It is generally accepted in basically all countries, including South Africa, that not more than about 15% of the traffic should exceed the limit and that this 15% should be subject to effective enforcement and prosecution. The current situation in this regard by far exceeds this requirement.

Excessive and inappropriate speeds, in combination with intoxicated drivers, also affect the safety of the high number of pedestrians jay-walking (some also intoxicated) and which is reflected in the high number of pedestrian deaths.

In some overseas countries it is an issue of major concern if the percentage of intoxicated drivers exceed 0,5%, with 0,2% seen as a possible reasonable acceptable limit. The current South African driving and drinking rate exceeds these expectations by about 20 to 30 times.

Although there might have been slight improvements with regard to certain offences, like overtaking across barrier lines and jumping red traffic signals, one such an offence is one too many. A culture of overall compliance and improved road user behaviour should be engendered.

Future road safety strategies should steer away from setting targets such as reducing the number of crashes and fatalities. There is nothing the authorities can do to prevent a crash – this is a matter for the driver of a vehicle to manage. Strategic targets should rather be aimed at reducing the level of lawlessness or, alternatively to improve the level of law compliance. Such targets could include, amongst others: reduce the percentage of intoxicated drivers to 0,2%; reduce the percentage of un-roadworthy vehicles to 1,0%, etc.

The cost of fatal crashes was estimated at R8,02 billion in 2003; R8,89 billion in 2004 and in the order of R 9,99 billion in 2005. The estimated cost of fatal crashes during December 2005 alone was about R1,02 billion, a large portion of which is directly paid for by law compliant as well as lawless road users themselves in fuel levies to the Road Accident Fund (RAF). It is therefore time that road users themselves start to make a contribution towards road safety through improved, courteous and more law compliant behaviour

7. Conclusion

The ever-growing number of road traffic crashes and related deaths demonstrate that the current systems for combating traffic offences are inadequate. Given the fact that no less than 14,126 people died on our roads during 2005 (almost 39 per day), road safety clearly should be a national priority. The level of “un-safety” is directly related to the degree of lawlessness on the roads, which is too high and can no longer be tolerated. Traffic offences, reckless, negligent, inconsiderate, aggressive, selfish, intimidating and arrogant driver behaviour also encourage road rage to a large extent.

There are many inter-related functional areas involved in the day-to-day management and control of road traffic and safety, some of which have a greater direct effect on the level of law compliance safety than others. Some functional areas are also basically rendered useless if it is not fully supported by other functions. For example the effect of road safety communication and radio and TV advertising is almost meaningless if not supported and followed-up by strong and visible law enforcement actions. Law enforcement in turn becomes meaningless if it is not supported by an efficient and effective adjudication process.

Traffic law enforcement officers have a key role in encouraging improved road user behaviour. Of all the functional areas involved in traffic management, traffic enforcement could possibly be regarded as the most direct and effective measure to effect and ensure a higher level of law compliance. All types and categories of traffic offences need to be targeted more effectively in order to curb the increase in road crashes.

In addition to improved enforcement, more attention should also be given to improved and more effective and participative road safety education at schools and other training institutions, as well as within communities themselves. This should contribute towards more responsible pedestrian behaviour. However, road authorities should also accept a much more proactive approach in the identification, provision and improvement of adequate and safe pedestrian facilities.

8. Recommendations

In order to improve the level of law compliance the following recommendations are submitted for consideration:

8.1 *Traffic law enforcement.*

Improved and more visible, driver inter-active law enforcement from 06:00 in the morning to at least 22:00 daily, as well as over weekends (Fridays, Saturdays and Sundays), the time and days when most fatal crashes happen, should be considered as a matter of urgency in order to reverse the current unacceptable road safety situation. In this regard the following specific issues are recommended:

- 8.1.1** An increase in the number of traffic officers at all traffic authorities to keep in pace with the increase in the number of vehicles and level of lawlessness, which should also provide for the expected increased demands on this profession during the 2010 World Cup event;
- 8.1.2** Traffic authorities should consider the introduction of dedicated traffic patrol teams to continuously undertake daily interrupted patrols on hazardous routes in particular. The duties of such patrol teams should consist of the following three main categories of functions:
 - (a) Road Patrolling, implying travelling with the traffic stream between “traffic stops”, during which attention shall be given to moving violations, stationary and abandoned vehicles, cyclists, pedestrians animals on the road. Patrol vehicles should be fitted with electronic devices such as number plate recognition systems and cameras to assist officers in the detection and recording of offences;
 - (b) Traffic stops at which vehicles shall be stopped at random during “mini roadblocks” and checked for driver offences (driving licences, alcohol, seatbelts, etc) and vehicle contraventions (tyres, lights, brakes, steering, etc). As a point of departure traffic teams should aim at stopping and checking at least 15 drivers and vehicles on a daily basis;
 - (c) Control of Selective Moving Violations at selected, high-priority hazardous locations where, amongst others, illegal and unsafe overtaking, excessive speeds and overloading must be targeted.
- 8.1.3** The draft National Road Traffic Law Enforcement Code (NRTLEC) should be finalized and published as a regulation under the RTMC Act as soon as possible. The Code will, amongst others, provide for the setting of enforcement targets; measuring of performance and achievement of objectives; as well as measures to be taken in case of non-performance.

8.1.4 The adjudication process of traffic violations must be improved in order to effect expeditious handling of notices and metering out of penalties. In this regard the implementation of the AARTO Act should be considered as a priority; and

8.1.5 A closer working relationship must be forged between law enforcement and road safety communication, advertising and promotion agencies. Road safety promotion material should be developed in support of enforcement.

8.2 Road Safety Education.

Improved and more effective and participative road safety education programmes and projects at schools and other training institutions, as well as within communities themselves, must be developed and introduced.

8.3 Hazardous Pedestrian Locations.

Road authorities must accept a much more proactive approach in the identification of hazardous pedestrian locations on the road and street network. Remedial measures for the provision and improvement of adequate and safe pedestrian facilities, in the form of all-weather sidewalks along certain roads and safe and visible crossings, possibly in combination with street lighting, traffic signals and traffic calming measures where feasible, should be introduced as a matter of urgency.

Annexure A

Number of Registered Vehicles

Apr 2005	Number of Registered Vehicles per Province									Total RSA
	GA	KZ	WC	EC	FS	MP	NW	LI	NC	
Motorised Vehicles										
Motorcars	1,835,244	620,254	819,717	281,573	214,790	213,533	206,009	142,034	72,156	4,405,310
Minibuses	91,613	37,295	35,014	19,028	11,367	16,607	18,147	16,717	3,193	248,981
Buses	9,310	4,842	4,024	2,054	1,380	2,540	2,548	2,188	712	29,598
Motorcycles	82,321	22,412	37,742	12,921	14,019	12,357	9,872	6,353	4,364	202,361
LDV's - Bakkies	463,588	218,006	216,632	130,673	92,264	114,251	103,441	113,221	46,200	1,498,276
Trucks	88,601	38,840	31,867	18,166	16,258	18,801	14,539	14,091	6,639	247,802
Other & Unknown	27,852	27,485	29,370	10,846	39,223	23,221	25,604	11,664	6,457	201,720
Sub-Total	2,598,529	969,134	1,174,366	475,261	389,301	401,310	380,160	306,268	139,721	6,834,048
Towed Vehicles										
Caravans	42,908	8,733	16,663	6,102	8,455	9,495	7,576	4,769	3,081	107,782
Heavy Trailers	35,814	20,480	11,834	7,387	10,510	10,038	7,618	4,818	3,386	111,885
Light Trailers	220,437	55,748	92,817	36,296	49,813	40,302	37,721	23,020	18,763	574,917
Other & Unknown	3,154	1,959	2,860	1,324	2,807	2,410	2,918	1,368	641	19,439
Sub-Total	302,313	86,920	124,174	51,109	71,585	62,245	55,833	33,975	25,871	814,023
All Vehicles	2,900,841	1,056,054	1,298,539	526,369	460,886	463,554	435,993	340,242	165,592	7,648,070

Apr 2006	Number of Registered Vehicles per Province									Total RSA
	GA	KZ	WC	EC	FS	MP	NW	LI	NC	
Motorised Vehicles										
Motorcars	1,962,700	664,731	869,268	299,552	224,428	230,221	218,236	152,478	76,241	4,697,855
Minibuses	96,184	39,226	35,110	20,321	11,684	17,225	18,662	17,974	3,268	259,654
Buses	10,501	5,451	4,328	2,511	1,457	3,029	2,668	2,651	788	33,384
Motorcycles	100,192	26,270	46,836	15,860	16,542	15,919	12,815	13,147	5,723	253,304
LDV's - Bakkies	504,440	235,116	234,184	138,638	95,848	122,525	108,936	119,885	48,520	1,608,092
Trucks	95,553	41,897	32,430	20,453	17,118	20,334	15,187	14,922	7,124	265,018
Other & Unknown	29,462	28,544	30,110	11,605	38,955	23,737	25,397	11,368	6,580	205,754
Sub-Total	2,799,032	1,041,235	1,252,266	508,940	406,032	432,990	401,901	332,425	148,244	7,323,061
Towed Vehicles										
Caravans	42,999	8,797	16,694	6,122	8,358	9,637	7,448	4,782	3,045	107,882
Heavy Trailers	37,894	21,342	11,223	8,742	10,951	10,680	7,743	4,979	3,562	117,116
Light Trailers	237,987	60,071	98,233	38,407	51,385	42,848	39,579	24,198	19,471	612,179
Other & Unknown	3,168	1,885	2,816	1,286	2,724	2,381	2,850	1,355	645	19,106
Sub-Total	322,048	92,095	128,966	54,557	73,418	65,546	57,620	35,314	26,723	856,283
All Vehicles	3,121,079	1,133,329	1,381,231	563,496	479,449	498,536	459,520	367,738	174,966	8,179,344

% Change Apr 2005-2006	Number of Registered Vehicles per Province									Total RSA
	GA	KZ	WC	EC	FS	MP	NW	LI	NC	
Motorised Vehicles										
Motorcars	6.94	7.17	6.04	6.39	4.49	7.82	5.94	7.35	5.66	6.64
Minibuses	4.99	5.18	0.27	6.80	2.79	3.72	2.84	7.52	2.35	4.29
Buses	12.79	12.58	7.55	22.25	5.58	19.25	4.71	21.16	10.67	12.79
Motorcycles	21.71	17.21	24.10	22.75	18.00	28.83	29.81	106.94	31.14	25.17
LDV's - Bakkies	8.81	7.85	8.10	6.10	3.88	7.24	5.31	5.89	5.02	7.33
Trucks	7.85	7.87	1.77	12.59	5.29	8.15	4.46	5.90	7.31	6.95
Other & Unknown	5.78	3.85	2.52	7.00	-0.68	2.22	-0.81	-2.54	1.90	2.00
Sub-Total	7.72	7.44	6.63	7.09	4.30	7.89	5.72	8.54	6.10	7.16
Towed Vehicles										
Caravans	0.21	0.73	0.19	0.33	-1.15	1.50	-1.69	0.27	-1.17	0.09
Heavy Trailers	5.81	4.21	-5.16	18.34	4.20	6.40	1.64	3.34	5.20	4.68
Light Trailers	7.96	7.75	5.84	5.82	3.16	6.32	4.93	5.12	3.77	6.48
Other & Unknown	0.44	-3.80	-1.54	-2.87	-2.97	-1.18	-2.35	-0.95	0.55	-1.71
Sub-Total	6.53	5.95	3.86	6.75	2.56	5.30	3.20	3.94	3.29	5.19
All Vehicles	7.59	7.32	6.37	7.05	4.03	7.55	5.40	8.08	5.66	6.95

Annexure B

Estimated Fuel Sales per Province for Road Use

Estimated Fuel Sales for Road Use (kilolitres)												
Year	Month	Fuel	GA	KZ	WC	EC	FS	MP	NW	LI	NC	RSA
2005	Jan	Petrol	314,491	139,517	141,727	66,700	45,064	60,084	47,172	43,064	16,182	874,002
		Diesel	96,130	73,450	57,895	28,969	34,804	50,466	33,326	22,669	16,345	414,055
	Feb	Petrol	334,482	136,926	139,593	65,271	45,274	58,104	48,381	42,154	15,189	885,375
		Diesel	109,067	86,331	66,182	31,815	39,985	51,017	35,044	23,518	17,598	460,557
	Mch	Petrol	341,641	146,568	152,284	71,595	50,137	65,106	51,408	45,910	16,916	941,564
		Diesel	106,454	77,952	70,667	31,905	32,601	53,260	31,087	23,792	18,731	446,448
	Apr	Petrol	340,282	141,849	141,460	64,735	45,501	58,447	47,542	41,672	15,103	896,590
		Diesel	115,654	93,395	64,755	31,919	34,360	54,746	32,544	22,291	17,315	466,978
	Mav	Petrol	317,983	130,843	131,003	61,847	40,892	55,552	46,033	40,565	13,959	838,677
		Diesel	99,333	78,588	57,372	29,246	25,616	52,517	26,928	22,817	16,196	408,612
	Jun	Petrol	350,223	144,655	143,245	69,480	51,912	63,050	53,076	47,593	16,784	940,018
		Diesel	130,064	92,095	67,328	34,534	42,543	61,990	38,906	24,660	21,118	513,237
	Jul	Petrol	356,866	147,617	139,842	66,876	48,337	61,335	48,598	45,399	15,720	930,590
		Diesel	118,094	89,322	62,612	33,020	37,219	58,743	34,216	24,085	19,192	476,503
	Aug	Petrol	337,508	139,359	139,402	66,572	47,933	59,636	50,615	45,292	15,384	901,700
		Diesel	114,343	81,383	57,983	31,689	30,416	56,503	29,727	24,062	17,492	443,598
	Sep	Petrol	340,980	137,459	140,570	65,403	49,498	59,253	49,734	44,203	15,538	902,637
		Diesel	120,599	85,435	65,114	32,838	33,930	57,873	31,503	24,043	17,924	469,259
	Oct	Petrol	331,492	136,405	137,471	62,685	44,692	56,834	46,855	41,559	13,902	871,895
		Diesel	126,517	90,105	68,229	32,658	35,380	61,794	33,192	23,429	18,972	490,276
Nov	Petrol	347,894	142,181	145,280	66,525	47,540	63,252	50,873	44,648	15,301	923,495	
	Diesel	130,466	91,757	68,872	33,888	39,927	60,489	33,910	24,935	19,919	504,164	
Dec	Petrol	343,700	162,699	167,321	80,684	60,670	72,294	55,036	53,654	19,360	1,015,417	
	Diesel	112,794	82,479	68,026	33,593	40,992	57,706	33,417	24,951	18,576	472,534	
Year	Petrol	4,057,542	1,706,079	1,719,195	808,373	577,452	732,947	595,321	535,713	189,338	10,921,960	
	Diesel	1,379,516	1,022,291	775,034	386,073	427,772	677,103	393,799	285,254	219,378	5,566,220	
	Total	5,437,058	2,728,369	2,494,230	1,194,446	1,005,225	1,410,051	989,120	820,967	408,716	16,488,180	
Year	Month	Fuel	GA	KZ	WC	EC	FS	MP	NW	LI	NC	RSA
2006	Jan	Petrol	319,866	145,907	145,433	70,704	50,415	66,456	50,262	44,316	16,722	910,080
		Diesel	115,831	72,536	60,827	30,241	35,422	51,128	31,557	22,833	16,963	437,338
	Feb	Petrol	302,987	120,670	131,612	57,455	34,925	49,220	41,540	36,436	12,579	877,425
		Diesel	114,730	73,188	62,611	30,357	28,371	45,880	27,640	23,921	17,743	424,441
	Mch	Petrol	367,351	148,607	156,420	71,528	49,044	61,851	54,617	45,510	17,723	972,650
		Diesel	134,753	86,830	78,668	38,382	39,727	53,937	33,835	25,108	28,882	520,122
	Apr	Petrol	0	0	0	0	0	0	0	0	0	0
		Diesel	0	0	0	0	0	0	0	0	0	0
	Mav	Petrol	0	0	0	0	0	0	0	0	0	0
		Diesel	0	0	0	0	0	0	0	0	0	0
	Jun	Petrol	0	0	0	0	0	0	0	0	0	0
		Diesel	0	0	0	0	0	0	0	0	0	0
	Jul	Petrol	0	0	0	0	0	0	0	0	0	0
		Diesel	0	0	0	0	0	0	0	0	0	0
	Aug	Petrol	0	0	0	0	0	0	0	0	0	0
		Diesel	0	0	0	0	0	0	0	0	0	0
	Sep	Petrol	0	0	0	0	0	0	0	0	0	0
		Diesel	0	0	0	0	0	0	0	0	0	0
	Oct	Petrol	0	0	0	0	0	0	0	0	0	0
		Diesel	0	0	0	0	0	0	0	0	0	0
Nov	Petrol	0	0	0	0	0	0	0	0	0	0	
	Diesel	0	0	0	0	0	0	0	0	0	0	
Dec	Petrol	0	0	0	0	0	0	0	0	0	0	
	Diesel	0	0	0	0	0	0	0	0	0	0	
Year	Petrol	990,204	415,184	433,465	199,687	134,385	177,527	146,418	126,263	47,024	2,670,156	
	Diesel	365,314	232,553	202,106	98,980	103,520	150,944	93,033	71,862	63,588	1,381,901	
	Total	1,355,518	647,737	635,572	298,667	237,905	328,471	239,451	198,125	110,612	4,052,057	

Annexure C

Estimated Total Distance Travelled per Month

Estimated Total Million-Vehicle-Kilometres Travelled per Month over the 12 Month Period													
Apr 2004-Mch 2005	Estimated Total Mil-Veh-Kms travelled per Vehicle Type per Month												Total
Motorised Veh's	Apr	May	Jun	Jul	Aug	Sep	Oct	Nov	Dec	Jan	Feb	Mch	RSA
Motorcars	5,668	6,256	5,360	5,876	6,500	5,619	6,109	5,700	6,729	5,800	5,888	6,249	71,754
Minibuses	567	627	537	588	652	563	613	572	672	581	590	626	7,188
Buses	82	101	86	89	111	87	100	92	90	87	96	93	1,114
Motorcycles	140	156	133	145	163	139	152	142	165	143	147	154	1,780
LDV's - Bakkies	2,325	2,675	2,290	2,455	2,844	2,361	2,626	2,442	2,690	2,409	2,526	2,596	30,239
Trucks	759	933	798	826	1,026	802	924	854	839	802	886	865	10,315
Other & Unknown	19	23	20	21	26	20	23	21	21	20	22	22	259
Total MilVehKms	9,560	10,772	9,226	10,001	11,322	9,591	10,547	9,823	11,207	9,842	10,154	10,605	122,650
Apr 2005-Mch 2006	Estimated Total Mil-Veh-Kms travelled per Vehicle Type per Month												Total
Motorised Veh's	Apr	May	Jun	Jul	Aug	Sep	Oct	Nov	Dec	Jan	Feb	Mch	RSA
Motorcars	5,962	5,569	6,258	6,186	5,989	6,002	5,808	6,148	6,736	6,042	5,240	6,472	72,413
Minibuses	598	558	628	620	600	602	583	617	674	605	526	649	7,260
Buses	97	85	106	99	93	98	101	104	99	91	88	108	1,170
Motorcycles	149	138	157	154	149	150	146	154	166	150	131	162	1,804
LDV's - Bakkies	2,559	2,335	2,733	2,639	2,519	2,575	2,565	2,685	2,780	2,521	2,278	2,805	30,994
Trucks	898	790	983	918	857	903	937	966	917	847	814	998	10,828
Other & Unknown	23	20	25	23	21	23	23	24	23	21	20	25	272
Total MilVehKms	10,286	9,495	10,890	10,639	10,228	10,351	10,164	10,698	11,396	10,276	9,098	11,219	124,740
Change	Estimated Total Mil-Veh-Kms travelled per Vehicle Type per Month												Total
Motorised Veh's	Apr	May	Jun	Jul	Aug	Sep	Oct	Nov	Dec	Jan	Feb	Mch	RSA
Motorcars	294	-687	898	310	-511	383	-301	447	7	241	-647	223	659
Minibuses	31	-69	91	32	-53	39	-29	45	2	24	-65	24	72
Buses	15	-16	20	10	-18	11	2	12	9	5	-8	15	56
Motorcycles	9	-18	23	8	-14	10	-6	12	1	6	-16	7	23
LDV's - Bakkies	234	-340	442	184	-325	214	-62	243	91	112	-248	209	755
Trucks	139	-143	185	91	-169	101	14	112	78	44	-72	133	513
Other & Unknown	3	-4	5	2	-4	3	0	3	2	1	-2	3	13
Total MilVehKms	726	-1,277	1,664	638	-1,095	761	-383	875	190	434	-1,057	614	2,091
% Change	Estimated Total Mil-Veh-Kms travelled per Vehicle Type per Month												Total
Motorised Veh's	Apr	May	Jun	Jul	Aug	Sep	Oct	Nov	Dec	Jan	Feb	Mch	RSA
Motorcars	5.19	-10.98	16.75	5.28	-7.86	6.82	-4.93	7.85	0.11	4.16	-10.99	3.57	0.92
Minibuses	5.44	-11.07	16.89	5.40	-8.05	6.94	-4.79	7.96	0.27	4.18	-10.93	3.80	1.00
Buses	18.51	-15.40	23.27	11.12	-16.60	12.64	1.56	13.19	9.41	5.51	-8.06	15.53	5.02
Motorcycles	6.41	-11.43	17.41	5.84	-8.79	7.39	-4.26	8.39	0.90	4.29	-10.69	4.70	1.32
LDV's - Bakkies	10.09	-12.72	19.31	7.50	-11.42	9.05	-2.35	9.95	3.37	4.67	-9.83	8.06	2.50
Trucks	18.34	-15.35	23.19	11.05	-16.51	12.57	1.49	13.13	9.28	5.50	-8.09	15.38	4.97
Other & Unknown	18.28	-15.33	23.17	11.02	-16.47	12.55	1.46	13.10	9.24	5.49	-8.11	15.32	4.95
Total MilVehKms	7.60	-11.85	18.04	6.38	-9.67	7.93	-3.63	8.91	1.69	4.41	-10.41	5.79	1.70

Annexure D

Estimated Total Distance Travelled per Province

Estimated Total Million.Vehicle.Kilometres Travelled per Province over the 12 Month Period										
Apr 2004-Mch 2005	Est. Total Mil-Veh-Kms Travelled per Vehicle Type per Province									Total
Motorised Veh's	GA	KZ	WC	EC	FS	MP	NW	LI	NC	RSA
Motorcars	26,472	11,232	11,297	5,324	3,735	4,793	3,935	3,631	1,334	71,754
Minibuses	2,634	1,129	1,129	533	378	487	397	365	137	7,188
Buses	269	206	155	80	87	126	82	65	44	1,114
Motorcycles	635	284	277	132	97	127	101	91	37	1,780
LDV's - Bakkies	9,669	5,066	4,544	2,214	1,878	2,559	1,881	1,620	807	30,239
Trucks	2,502	1,906	1,434	739	803	1,162	761	601	406	10,315
Other & Unknown	63	48	36	19	20	29	19	15	10	259
Total MilVehKms	42,243	19,871	18,871	9,041	6,999	9,284	7,177	6,389	2,775	122,650
Apr 2005-Mch 2006	Est. Total Mil-Veh-Kms Travelled per Vehicle Type per Province									Total
Motorised Veh's	GA	KZ	WC	EC	FS	MP	NW	LI	NC	RSA
Motorcars	26,785	11,331	11,399	5,342	3,836	4,920	3,977	3,533	1,289	72,413
Minibuses	2,669	1,139	1,140	535	388	500	401	355	132	7,260
Buses	307	210	164	82	86	136	79	60	46	1,170
Motorcycles	648	286	281	132	99	131	101	88	36	1,804
LDV's - Bakkies	10,156	5,126	4,670	2,241	1,896	2,693	1,860	1,538	814	30,994
Trucks	2,858	1,936	1,522	759	796	1,251	733	551	423	10,828
Other & Unknown	72	49	38	19	20	31	18	14	11	272
Total MilVehKms	43,496	20,077	19,215	9,110	7,121	9,662	7,171	6,138	2,751	124,740
Change	Est. Total Mil-Veh-Kms Travelled per Vehicle Type per Province									Total
Motorised Veh's	GA	KZ	WC	EC	FS	MP	NW	LI	NC	RSA
Motorcars	313	100	102	18	100	127	42	-98	-46	659
Minibuses	36	10	11	2	10	14	4	-10	-4	72
Buses	39	3	10	2	-1	10	-3	-6	2	56
Motorcycles	13	3	4	1	2	4	0	-3	-1	23
LDV's - Bakkies	487	60	127	27	18	134	-21	-83	7	755
Trucks	356	30	88	19	-7	89	-28	-51	17	513
Other & Unknown	9	1	2	0	-0	2	-1	-1	0	13
Total MilVehKms	1,253	206	344	69	122	378	-6	-251	-25	2,091
% Change	Est. Total Mil-Veh-Kms Travelled per Vehicle Type per Province									Total
Motorised Veh's	GA	KZ	WC	EC	FS	MP	NW	LI	NC	RSA
Motorcars	1.18	0.89	0.91	0.34	2.69	2.64	1.07	-2.69	-3.43	0.92
Minibuses	1.36	0.90	1.00	0.38	2.58	2.81	0.94	-2.82	-3.12	1.00
Buses	14.49	1.57	6.20	2.63	-0.93	7.65	-3.71	-8.47	4.16	5.02
Motorcycles	2.06	0.96	1.37	0.56	2.18	3.42	0.46	-3.33	-2.01	1.32
LDV's - Bakkies	5.04	1.18	2.79	1.20	0.94	5.22	-1.11	-5.11	0.90	2.50
Trucks	14.24	1.57	6.13	2.60	-0.90	7.62	-3.67	-8.41	4.12	4.97
Other & Unknown	14.16	1.56	6.10	2.59	-0.89	7.60	-3.65	-8.39	4.10	4.95
Total MilVehKms	2.97	1.04	1.82	0.77	1.74	4.08	-0.09	-3.93	-0.88	1.70

Annexure E

Estimated Average Distance Travelled per Vehicle per Month

Estimated Average Distance Travelled per Vehicle per Type of Vehicle per Month - kilometres													
Apr 2004-Mch 2005	Kilometres per Month												12 month
Motorised Veh's	Apr	May	Jun	Jul	Aug	Sep	Oct	Nov	Dec	Jan	Feb	Mch	Average
Motorcars	1,575	1,685	1,445	1,592	1,766	1,505	1,611	1,501	1,870	1,553	1,529	1,650	1,607
Minibuses	2,441	2,631	2,239	2,475	2,764	2,359	2,539	2,370	2,938	2,455	2,433	2,625	2,522
Buses	3,423	4,256	3,566	3,665	4,547	3,503	3,993	3,627	3,718	3,425	3,711	3,592	3,752
Motorcycles	926	1,004	856	928	1,033	865	919	838	1,007	838	826	871	909
LDV's - Bakkies	1,567	1,800	1,525	1,632	1,901	1,558	1,720	1,591	1,805	1,581	1,629	1,673	1,665
Trucks	3,731	4,629	3,872	4,024	4,965	3,869	4,392	3,986	4,085	3,792	4,091	3,991	4,119
Other & Unknown	107	130	111	116	140	111	125	114	114	107	116	115	117
All Vehicle Average	1,630	1,798	1,533	1,668	1,892	1,583	1,717	1,592	1,907	1,618	1,624	1,716	1,690
Apr 2005-Mch 2006	Kilometres per Month												12 month
Motorised Veh's	Apr	May	Jun	Jul	Aug	Sep	Oct	Nov	Dec	Jan	Feb	Mch	Average
Motorcars	1,518	1,421	1,634	1,564	1,531	1,518	1,435	1,531	1,770	1,545	1,241	1,576	1,524
Minibuses	2,430	2,261	2,611	2,506	2,444	2,442	2,315	2,469	2,847	2,497	2,029	2,596	2,454
Buses	3,599	3,149	3,994	3,680	3,354	3,485	3,573	3,681	3,540	3,163	2,955	3,811	3,499
Motorcycles	803	739	843	798	759	740	699	731	810	685	551	682	737
LDV's - Bakkies	1,612	1,467	1,747	1,652	1,568	1,592	1,571	1,647	1,749	1,553	1,349	1,705	1,601
Trucks	4,005	3,549	4,448	4,099	3,766	3,929	4,051	4,176	4,047	3,646	3,447	4,387	3,963
Other & Unknown	116	104	128	120	112	117	120	124	119	109	105	132	117
All Vehicle Average	1,608	1,487	1,739	1,653	1,596	1,599	1,540	1,630	1,816	1,595	1,325	1,681	1,606
Change	Kilometres per Month												12 month
Motorised Veh's	Apr	May	Jun	Jul	Aug	Sep	Oct	Nov	Dec	Jan	Feb	Mch	Average
Motorcars	-57	-265	188	-28	-235	13	-176	31	-101	-8	-288	-74	-83
Minibuses	-11	-370	372	32	-320	82	-224	99	-91	43	-404	-30	-68
Buses	176	-1,107	427	15	-1,193	-18	-420	54	-178	-262	-756	220	-253
Motorcycles	-122	-265	-13	-130	-274	-125	-220	-107	-197	-153	-275	-188	-173
LDV's - Bakkies	45	-333	223	19	-333	34	-149	55	-55	-28	-279	32	-64
Trucks	274	-1,080	575	75	-1,198	60	-341	191	-39	-146	-644	397	-156
Other & Unknown	9	-25	17	4	-28	6	-5	10	4	2	-10	17	0
All Vehicle Average	-22	-311	205	-15	-296	16	-177	38	-91	-23	-299	-35	-84
% Change	Kilometres per Month												12 month
Motorised Veh's	Apr	May	Jun	Jul	Aug	Sep	Oct	Nov	Dec	Jan	Feb	Mch	Average
Motorcars	-3.64	-15.72	13.03	-1.75	-13.31	0.87	-10.91	2.05	-5.39	-0.52	-18.83	-4.47	-5.18
Minibuses	-0.43	-14.07	16.64	1.28	-11.57	3.50	-8.81	4.17	-3.10	1.74	-16.60	-1.12	-2.71
Buses	5.14	-26.01	11.98	0.41	-26.24	-0.52	-10.53	1.50	-4.78	-7.65	-20.36	6.11	-6.75
Motorcycles	-13.23	-26.38	-1.57	-14.04	-26.56	-14.46	-23.93	-12.80	-19.54	-18.25	-33.33	-21.63	-18.98
LDV's - Bakkies	2.86	-18.49	14.61	1.18	-17.54	2.16	-8.64	3.47	-3.07	-1.78	-17.15	1.90	-3.86
Trucks	7.35	-23.33	14.86	1.87	-24.14	1.55	-7.77	4.78	-0.95	-3.84	-15.74	9.94	-3.80
Other & Unknown	8.59	-19.64	14.94	3.36	-20.13	5.72	-4.03	9.08	3.79	1.84	-9.04	14.90	0.04
All Vehicle Average	-1.34	-17.31	13.39	-0.91	-15.63	0.99	-10.30	2.37	-4.77	-1.44	-18.41	-2.01	-4.98

Annexure F

Estimated Total Distance Travelled per Vehicle per Province

Estimated Average Distance Travelled per Vehicle per Type of Vehicle over the indicated 12 Month Period : kilometres										
Apr 2004-Mch 2005	Av. Annual Distance Travelled per Vehicle per Type - kilometres									Average RSA
Motorised Veh's	GA	KZ	WC	EC	FS	MP	NW	LI	NC	
Motorcars	14,841	18,702	14,152	19,606	17,769	23,316	19,630	26,537	18,996	19,283
Minibuses	29,389	30,968	32,212	28,985	33,484	30,008	22,082	22,621	42,660	30,267
Buses	30,153	44,511	39,962	42,023	65,295	52,980	33,125	31,483	65,691	45,025
Motorcycles	8,941	13,969	8,071	11,059	7,691	11,919	11,372	16,146	9,016	10,909
LDV's - Bakkies	21,558	23,941	21,746	17,457	20,774	23,217	18,607	14,768	17,770	19,982
Trucks	29,456	50,893	45,466	43,681	50,260	64,395	53,520	43,760	63,417	49,428
Other & Unknown	2,310	1,750	1,251	1,778	514	1,292	747	1,408	1,604	1,406
Average All Vehicles	16,802	21,176	16,542	19,742	18,369	24,073	19,363	21,667	20,355	20,279
Apr 2005-Mch 2006	Av. Annual Distance Travelled per Vehicle per Type - kilometres									Average RSA
Motorised Veh's	GA	KZ	WC	EC	FS	MP	NW	LI	NC	
Motorcars	14,205	17,777	13,587	18,475	17,579	22,342	18,903	24,195	17,489	18,284
Minibuses	28,561	29,860	32,531	27,272	33,804	29,691	21,861	20,472	40,971	29,447
Buses	31,545	41,042	39,083	37,533	61,266	49,491	30,595	24,641	62,654	41,983
Motorcycles	7,098	12,028	6,822	9,445	6,631	9,600	9,164	11,332	7,428	8,839
LDV's - Bakkies	21,133	22,803	20,852	16,742	20,249	22,933	17,637	13,271	17,286	19,212
Trucks	31,219	48,249	47,330	39,677	48,088	64,099	49,376	37,917	62,008	47,551
Other & Unknown	2,510	1,746	1,289	1,708	510	1,336	724	1,207	1,629	1,407
Average All Vehicles	16,223	20,134	15,942	18,626	18,011	23,345	18,475	19,442	19,244	19,269
Change	Av. Annual Distance Travelled per Vehicle per Type - kilometres									Average RSA
Motorised Veh's	GA	KZ	WC	EC	FS	MP	NW	LI	NC	
Motorcars	-636	-924	-565	-1,131	-189	-974	-727	-2,341	-1,507	-999
Minibuses	-827	-1,108	319	-1,713	320	-317	-221	-2,149	-1,689	-820
Buses	1,392	-3,468	-879	-4,490	-4,029	-3,489	-2,530	-6,843	-3,037	-3,041
Motorcycles	-1,843	-1,941	-1,249	-1,614	-1,059	-2,320	-2,208	-4,814	-1,588	-2,071
LDV's - Bakkies	-425	-1,138	-894	-715	-525	-284	-970	-1,497	-484	-770
Trucks	1,763	-2,644	1,864	-4,004	-2,172	-297	-4,144	-5,843	-1,409	-1,876
Other & Unknown	200	-4	38	-70	-4	44	-23	-201	25	0
Average All Vehicles	-579	-1,042	-600	-1,116	-359	-727	-889	-2,225	-1,111	-1,010
% Change	Av. Annual Distance Travelled per Vehicle per Type - kilometres									Average RSA
Motorised Veh's	GA	KZ	WC	EC	FS	MP	NW	LI	NC	
Motorcars	-4.29	-4.94	-3.99	-5.77	-1.06	-4.18	-3.70	-8.82	-7.93	-5.18
Minibuses	-2.82	-3.58	0.99	-5.91	0.96	-1.06	-1.00	-9.50	-3.96	-2.71
Buses	4.62	-7.79	-2.20	-10.68	-6.17	-6.59	-7.64	-21.73	-4.62	-6.75
Motorcycles	-20.61	-13.89	-15.48	-14.60	-13.77	-19.46	-19.42	-29.82	-17.61	-18.98
LDV's - Bakkies	-1.97	-4.75	-4.11	-4.09	-2.53	-1.22	-5.22	-10.14	-2.72	-3.86
Trucks	5.99	-5.20	4.10	-9.17	-4.32	-0.46	-7.74	-13.35	-2.22	-3.80
Other & Unknown	8.66	-0.20	3.03	-3.95	-0.81	3.41	-3.13	-14.30	1.56	0.04
Average All Vehicles	-3.45	-4.92	-3.63	-5.65	-1.95	-3.02	-4.59	-10.27	-5.46	-4.98

Annexure G

Total Number of Un-Roadworthy and Un-Licensed Vehicles

Number of Vehicles : Un-Roadworthy OR Un-Licensed OR Both										
Apr 2005	GA	KZ	WC	EC	FS	MP	NW	LI	NC	RSA
Motorised Vehicles										
Motorcars	116,453	39,892	46,893	19,078	13,493	14,720	16,366	11,177	3,299	281,371
Minibuses	11,848	6,594	3,579	2,521	1,501	1,968	2,829	2,465	317	33,622
Buses	906	574	321	249	175	235	222	295	72	3,049
Motorcycles	13,275	3,012	4,093	1,770	2,412	2,724	2,254	1,503	495	31,538
LDV's - Bakkies	25,480	15,040	10,340	8,319	4,875	6,816	6,821	6,869	1,569	86,129
Trucks	9,173	4,785	3,295	2,317	2,927	3,020	2,509	2,578	1,054	31,658
Other & Unkwn	1,632	1,995	978	622	2,044	1,633	1,750	1,022	220	11,896
Sub-Total	178,767	71,892	69,499	34,876	27,427	31,116	32,751	25,909	7,026	479,263
Towed Vehicles										
Caravans	2,652	580	879	461	455	791	698	487	135	7,138
Heavy Trailers	3,891	1,662	920	670	1,204	1,219	851	743	310	11,470
Light Trailers	11,876	3,458	4,496	2,383	2,582	2,982	2,586	1,753	592	32,708
Unknown	353	268	217	137	266	267	282	120	50	1,960
Sub-Total	18,772	5,968	6,512	3,651	4,507	5,259	4,417	3,103	1,087	53,276
All Vehicles	197,539	77,860	76,011	38,527	31,934	36,375	37,168	29,012	8,113	532,539
Number of Vehicles : Un-Roadworthy OR Un-Licensed OR Both										
Apr 2006	GA	KZ	WC	EC	FS	MP	NW	LI	NC	RSA
Motorised Vehicles										
Motorcars	130,029	12,235	45,176	21,557	16,165	16,731	53,636	3,676	16,516	315,721
Minibuses	12,987	2,399	7,340	2,794	1,833	2,208	3,808	368	2,815	36,552
Buses	1,049	306	784	263	169	311	324	82	252	3,540
Motorcycles	22,337	2,745	4,483	2,652	3,822	5,095	6,039	911	3,782	51,866
LDV's - Bakkies	28,408	7,666	16,432	9,471	5,621	7,397	11,343	1,733	6,600	94,671
Trucks	9,812	2,518	5,728	2,627	3,207	3,338	3,354	1,178	2,583	34,345
Other & Unkwn	1,981	1,145	1,989	748	2,556	1,727	1,030	287	1,752	13,215
Sub-Total	206,603	29,014	81,932	40,112	33,373	36,807	79,534	8,235	34,300	549,910
Towed Vehicles										
Caravans	2,936	522	628	492	542	847	855	151	655	7,628
Heavy Trailers	4,479	862	2,022	832	1,298	1,313	920	379	1,015	13,120
Light Trailers	13,757	2,001	3,901	2,729	3,288	3,050	4,933	645	2,404	36,708
Unknown	373	121	270	173	288	224	267	45	264	2,025
Sub-Total	21,545	3,506	6,821	4,226	5,416	5,434	6,975	1,220	4,338	59,481
All Vehicles	228,148	32,520	88,753	44,338	38,789	42,241	86,509	9,455	38,638	609,391
Number of Vehicles : Un-Roadworthy OR Un-Licensed OR Both										
% Change	GA	KZ	WC	EC	FS	MP	NW	LI	NC	RSA
Motorised Vehicles										
Motorcars	11.66	-69.33	-3.66	12.99	19.80	13.66	227.73	-67.11	400.64	12.21
Minibuses	9.61	-63.62	105.09	10.83	22.12	12.20	34.61	-85.07	788.01	8.71
Buses	15.78	-46.69	144.24	5.62	-3.43	32.34	45.95	-72.20	250.00	16.10
Motorcycles	68.26	-8.86	9.53	49.83	58.46	87.04	167.92	-39.39	664.04	64.46
LDV's - Bakkies	11.49	-49.03	58.92	13.85	15.30	8.52	66.30	-74.77	320.65	9.92
Trucks	6.97	-47.38	73.84	13.38	9.57	10.53	33.68	-54.31	145.07	8.49
Other & Unkwn	21.38	-42.61	103.37	20.26	25.05	5.76	-41.14	-71.92	696.36	11.09
Sub-Total	15.57	-59.64	17.89	15.01	21.68	18.29	142.84	-68.22	388.19	14.74
Towed Vehicles										
Caravans	10.71	-10.00	-28.56	6.72	19.12	7.08	22.49	-68.99	385.19	6.86
Heavy Trailers	15.11	-48.13	119.78	24.18	7.81	7.71	8.11	-48.99	227.42	14.39
Light Trailers	15.84	-42.13	-13.23	14.52	27.34	2.28	90.76	-63.21	306.08	12.23
Unknown	5.67	-54.85	24.42	26.28	8.27	-16.10	-5.32	-62.50	428.00	3.32
Sub-Total	14.77	-41.25	4.75	15.75	20.17	3.33	57.91	-60.68	299.08	11.65
All Vehicles	15.50	-58.23	16.76	15.08	21.47	16.13	132.75	-67.41	376.25	14.43

Annexure H

Number of Un-Roadworthy Vehicles

Number of Un-Roadworthy Vehicles										
Apr 2005	GA	KZ	WC	EC	FS	MP	NW	LI	NC	RSA
Motorised Vehicles										
Motorcars	34,731	12,708	12,691	4,301	4,316	4,117	5,074	2,805	694	81,437
Minibuses	8,159	4,648	2,118	1,611	1,135	1,384	1,984	1,713	212	22,964
Buses	756	459	257	186	145	195	197	224	64	2,483
Motorcycles	7,638	1,409	1,693	559	1,449	1,527	1,251	874	269	16,669
LDV's - Bakkies	8,393	5,709	3,009	2,108	1,583	1,957	2,193	1,663	417	27,032
Trucks	7,516	3,825	2,788	1,914	2,568	2,475	2,067	1,969	968	26,090
Other & Unkwn	760	856	288	188	830	531	573	432	79	4,537
Sub-Total	67,953	29,614	22,844	10,867	12,026	12,186	13,339	9,680	2,703	181,212
Towed Vehicles										
Caravans	818	197	244	89	154	196	212	145	39	2,094
Heavy Trailers	3,257	1,383	795	575	994	1,069	742	618	292	9,725
Light Trailers	3,013	1,052	1,020	344	938	485	598	394	115	7,959
Unknown	114	106	44	23	63	48	40	23	15	476
Sub-Total	7,202	2,738	2,103	1,031	2,149	1,798	1,592	1,180	461	20,254
All Vehicles	75,155	32,352	24,947	11,898	14,175	13,984	14,931	10,860	3,164	201,466
Apr 2006	GA	KZ	WC	EC	FS	MP	NW	LI	NC	RSA
Motorised Vehicles										
Motorcars	36,909	2,887	14,709	4,813	4,964	4,504	14,566	738	5,474	89,564
Minibuses	8,948	1,664	5,274	1,689	1,302	1,479	2,191	235	1,971	24,753
Buses	813	239	666	213	146	255	257	73	207	2,869
Motorcycles	14,272	1,758	2,499	1,165	2,435	3,314	3,002	656	2,695	31,796
LDV's - Bakkies	8,808	1,682	6,384	2,258	1,736	2,028	3,295	459	2,203	28,853
Trucks	7,949	2,022	4,651	2,222	2,800	2,747	2,819	1,066	2,156	28,432
Other & Unkwn	958	479	950	225	952	576	341	91	622	5,194
Sub-Total	78,657	10,731	35,133	12,585	14,335	14,903	26,471	3,318	15,328	211,461
Towed Vehicles										
Caravans	862	147	250	90	156	215	238	53	233	2,244
Heavy Trailers	3,765	701	1,725	708	1,123	1,151	784	347	878	11,182
Light Trailers	3,288	407	1,239	422	1,063	580	1,197	120	725	9,041
Unknown	120	21	95	31	77	46	68	16	44	518
Sub-Total	8,035	1,276	3,309	1,251	2,419	1,992	2,287	536	1,880	22,985
All Vehicles	86,692	12,007	38,442	13,836	16,754	16,895	28,758	3,854	17,208	234,446
% Change	GA	KZ	WC	EC	FS	MP	NW	LI	NC	RSA
Motorised Vehicles										
Motorcars	6.27	-77.28	15.90	11.90	15.01	9.40	187.07	-73.69	688.76	9.98
Minibuses	9.67	-64.20	149.01	4.84	14.71	6.86	10.43	-86.28	829.72	7.79
Buses	7.54	-47.93	159.14	14.52	0.69	30.77	30.46	-67.41	223.44	15.55
Motorcycles	86.86	24.77	47.61	108.41	68.05	117.03	139.97	-24.94	901.86	90.75
LDV's - Bakkies	4.94	-70.54	112.16	7.12	9.67	3.63	50.25	-72.40	428.30	6.74
Trucks	5.76	-47.14	66.82	16.09	9.03	10.99	36.38	-45.86	122.73	8.98
Other & Unkwn	26.05	-44.04	229.86	19.68	14.70	8.47	-40.49	-78.94	687.34	14.48
Sub-Total	15.75	-63.76	53.80	15.81	19.20	22.30	98.45	-65.72	467.07	16.69
Towed Vehicles										
Caravans	5.38	-25.38	2.46	1.12	1.30	9.69	12.26	-63.45	497.44	7.16
Heavy Trailers	15.60	-49.31	116.98	23.13	12.98	7.67	5.66	-43.85	200.68	14.98
Light Trailers	9.13	-61.31	21.47	22.67	13.33	19.59	100.17	-69.54	530.43	13.59
Unknown	5.26	-80.19	115.91	34.78	22.22	-4.17	70.00	-30.43	193.33	8.82
Sub-Total	11.57	-53.40	57.35	21.34	12.56	10.79	43.66	-54.58	307.81	13.48
All Vehicles	15.35	-62.89	54.09	16.29	18.19	20.82	92.61	-64.51	443.87	16.37

Annexure I

Number of Un-Licensed Vehicles

Number of Un-Licensed Vehicles										
Apr 2005	GA	KZ	WC	EC	FS	MP	NW	LI	NC	RSA
Motorised Vehicles										
Motorcars	73,973	23,944	30,060	13,546	8,231	9,601	9,926	7,584	2,445	179,310
Minibuses	2,544	1,153	1,083	638	251	395	512	467	83	7,126
Buses	76	60	34	34	15	21	15	36	5	296
Motorcycles	4,741	1,461	2,183	1,136	837	1,032	849	527	207	12,973
LDV's - Bakkies	15,376	8,055	6,501	5,688	2,995	4,426	4,115	4,804	1,082	53,042
Trucks	872	507	265	219	189	289	230	314	48	2,933
Other & Unkwn	786	1,015	654	415	1,133	1,024	1,113	527	135	6,802
Sub-Total	98,368	36,195	40,780	21,676	13,651	16,788	16,760	14,259	4,005	262,482
Towed Vehicles										
Caravans	1,677	367	595	354	287	561	442	312	92	4,687
Heavy Trailers	334	152	69	55	112	80	58	66	10	936
Light Trailers	8,487	2,285	3,347	1,983	1,582	2,424	1,895	1,306	465	23,774
Unknown	219	150	163	109	192	213	235	95	32	1,408
Sub-Total	10,717	2,954	4,174	2,501	2,173	3,278	2,630	1,779	599	30,805
All Vehicles	109,085	39,149	44,954	24,177	15,824	20,066	19,390	16,038	4,604	293,287
Apr 2006	GA	KZ	WC	EC	FS	MP	NW	LI	NC	RSA
Motorised Vehicles										
Motorcars	84,548	8,543	26,987	15,318	10,026	11,035	34,519	2,721	9,697	203,394
Minibuses	2,782	452	1,224	746	344	478	1,205	102	515	7,848
Buses	122	38	64	28	12	30	35	5	23	357
Motorcycles	6,538	784	1,727	1,335	1,139	1,415	2,719	230	866	16,753
LDV's - Bakkies	17,836	5,610	8,760	6,638	3,544	4,942	7,240	1,171	3,939	59,680
Trucks	1,004	261	587	222	216	316	293	60	227	3,186
Other & Unkwn	904	599	925	493	1,507	1,064	643	190	1,044	7,369
Sub-Total	113,734	16,287	40,274	24,780	16,788	19,280	46,654	4,479	16,311	298,587
Towed Vehicles										
Caravans	1,904	337	355	389	369	592	583	94	382	5,005
Heavy Trailers	384	88	171	71	98	88	75	17	74	1,066
Light Trailers	9,976	1,535	2,540	2,234	2,151	2,386	3,604	516	1,590	26,532
Unknown	242	99	162	136	198	175	188	28	215	1,443
Sub-Total	12,506	2,059	3,228	2,830	2,816	3,241	4,450	655	2,261	34,046
All Vehicles	126,240	18,346	43,502	27,610	19,604	22,521	51,104	5,134	18,572	332,633
% Change	GA	KZ	WC	EC	FS	MP	NW	LI	NC	RSA
Motorised Vehicles										
Motorcars	14.30	-64.32	-10.22	13.08	21.81	14.94	247.76	-64.12	296.61	13.43
Minibuses	9.36	-60.80	13.02	16.93	37.05	21.01	135.35	-78.16	520.48	10.13
Buses	60.53	-36.67	88.24	-17.65	-20.00	42.86	133.33	-86.11	360.00	20.61
Motorcycles	37.90	-46.34	-20.89	17.52	36.08	37.11	220.26	-56.36	318.36	29.14
LDV's - Bakkies	16.00	-30.35	34.75	16.70	18.33	11.66	75.94	-75.62	264.05	12.51
Trucks	15.14	-48.52	121.51	1.37	14.29	9.34	27.39	-80.89	372.92	8.63
Other & Unkwn	15.01	-40.99	41.44	18.80	33.01	3.91	-42.23	-63.95	673.33	8.34
Sub-Total	15.62	-55.00	-1.24	14.32	22.98	14.84	178.37	-68.59	307.27	13.76
Towed Vehicles										
Caravans	13.54	-8.17	-40.34	9.89	28.57	5.53	31.90	-69.87	315.22	6.78
Heavy Trailers	14.97	-42.11	147.83	29.09	-12.50	10.00	29.31	-74.24	640.00	13.89
Light Trailers	17.54	-32.82	-24.11	12.66	35.97	-1.57	90.18	-60.49	241.94	11.60
Unknown	10.50	-34.00	-0.61	24.77	3.13	-17.84	-20.00	-70.53	571.88	2.49
Sub-Total	16.69	-30.30	-22.66	13.15	29.59	-1.13	69.20	-63.18	277.46	10.52
All Vehicles	15.73	-53.14	-3.23	14.20	23.89	12.23	163.56	-67.99	303.39	13.42

Annexure J

Estimated Outstanding Vehicle Licence Fees

Estimated Outstanding Amount in Vehicle Licence Fees per Province - Rand (R)										
Apr 2005	GA	KZ	WC	EC	FS	MP	NW	LI	NC	RSA
Motorised Vehicles										
Motorcars	12,700,595	5,884,698	10,426,195	2,200,704	1,548,061	1,528,775	1,465,994	1,400,123	449,128	37,604,273
Minibuses	671,616	408,162	555,579	155,034	62,499	98,355	116,736	123,288	22,908	2,214,177
Buses	591,888	581,940	436,050	235,722	115,290	144,648	99,000	276,048	39,645	2,520,231
Motorcycles	739,596	341,874	733,488	187,440	160,704	154,800	114,615	94,860	37,881	2,565,258
LDV's - Bakkies	2,398,656	1,884,870	2,184,336	938,520	575,040	663,900	555,525	864,720	198,006	10,263,573
Trucks	1,428,336	1,042,646	762,167	298,738	262,181	419,281	319,884	511,318	80,381	5,124,930
Other & Unkwn	235,800	304,500	196,200	124,500	339,900	307,200	333,900	158,100	40,500	2,040,600
Sub-Total	18,766,487	10,448,690	15,294,015	4,140,658	3,063,675	3,316,959	3,005,654	3,428,457	868,448	62,333,043
Towed Vehicles										
Caravans	120,744	39,636	69,615	22,302	24,969	47,124	27,846	29,952	6,348	388,536
Heavy Trailers	811,620	466,716	255,024	120,120	289,464	151,680	119,625	140,976	24,990	2,380,215
Light Trailers	611,064	246,780	391,599	124,929	137,634	203,616	119,385	125,376	32,085	1,992,468
Unknown	65,700	45,000	48,900	32,700	57,600	63,900	70,500	28,500	9,600	422,400
Sub-Total	1,609,128	798,132	765,138	300,051	509,667	466,320	337,356	324,804	73,023	5,183,619
All Vehicles	20,375,615	11,246,822	16,059,153	4,440,709	3,573,342	3,783,279	3,343,010	3,753,261	941,471	67,516,662
Estimated Outstanding Amount in Vehicle Licence Fees per Province - Rand (R)										
Apr 2006	GA	KZ	WC	EC	FS	MP	NW	LI	NC	RSA
Motorised Vehicles										
Motorcars	14,516,241	2,099,607	9,360,337	2,488,586	1,885,659	1,757,112	5,098,191	502,338	1,781,264	39,489,335
Minibuses	734,448	160,008	627,912	181,278	85,656	119,022	274,740	26,928	142,140	2,352,132
Buses	950,136	368,562	820,800	194,124	92,232	206,640	231,000	38,340	182,367	3,084,201
Motorcycles	1,019,928	183,456	580,272	220,275	218,688	212,250	367,065	41,400	158,478	3,001,812
LDV's - Bakkies	2,782,416	1,312,740	2,943,360	1,095,270	680,448	741,300	977,400	210,780	720,837	11,464,551
Trucks	1,644,552	536,747	1,688,271	302,830	299,635	458,453	407,504	97,704	380,134	5,815,830
Other & Unkwn	271,200	179,700	277,500	147,900	452,100	319,200	192,900	57,000	313,200	2,210,700
Sub-Total	21,918,921	4,840,819	16,298,452	4,630,263	3,714,418	3,813,976	7,548,800	974,490	3,678,421	67,418,561
Towed Vehicles										
Caravans	137,088	36,396	41,535	24,507	32,103	49,728	36,729	9,024	26,358	393,468
Heavy Trailers	933,120	270,204	632,016	155,064	253,281	166,848	154,688	36,312	184,926	2,786,459
Light Trailers	718,272	165,780	297,180	140,742	187,137	200,424	227,052	49,536	109,710	2,095,833
Unknown	72,600	29,700	48,600	40,800	59,400	52,500	56,400	8,400	64,500	432,900
Sub-Total	1,861,080	502,080	1,019,331	361,113	531,921	469,500	474,869	103,272	385,494	5,708,660
All Vehicles	23,780,001	5,342,899	17,317,783	4,991,376	4,246,339	4,283,476	8,023,669	1,077,762	4,063,915	73,127,221
Estimated Outstanding Amount in Vehicle Licence Fees per Province - Rand (R)										
Change	GA	KZ	WC	EC	FS	MP	NW	LI	NC	RSA
Motorised Vehicles										
Motorcars	1,815,646	-3,785,092	-1,065,858	287,882	337,598	228,337	3,632,197	-897,785	1,332,137	1,885,062
Minibuses	62,832	-248,154	72,333	26,244	23,157	20,667	158,004	-96,360	119,232	137,955
Buses	358,248	-213,378	384,750	-41,598	-23,058	61,992	132,000	-237,708	142,722	563,970
Motorcycles	280,332	-158,418	-153,216	32,835	57,984	57,450	252,450	-53,460	120,597	436,554
LDV's - Bakkies	383,760	-572,130	759,024	156,750	105,408	77,400	421,875	-653,940	522,831	1,200,978
Trucks	216,216	-505,899	926,104	4,092	37,454	39,172	87,620	-413,614	299,753	690,900
Other & Unkwn	35,400	-124,800	81,300	23,400	112,200	12,000	-141,000	-101,100	272,700	170,100
Sub-Total	3,152,434	-5,607,871	1,004,437	489,605	650,743	497,018	4,543,146	-2,453,966	2,809,972	5,085,518
Towed Vehicles										
Caravans	16,344	-3,240	-28,080	2,205	7,134	2,604	8,883	-20,928	20,010	4,932
Heavy Trailers	121,500	-196,512	376,992	34,944	-36,183	15,168	35,063	-104,664	159,936	406,244
Light Trailers	107,208	-81,000	-94,419	15,813	49,503	-3,192	107,667	-75,840	77,625	103,365
Unknown	6,900	-15,300	-300	8,100	1,800	-11,400	-14,100	-20,100	54,900	10,500
Sub-Total	251,952	-296,052	254,193	61,062	22,254	3,180	137,513	-221,532	312,471	525,041
All Vehicles	3,404,386	-5,903,923	1,258,630	550,667	672,997	500,198	4,680,659	-2,675,498	3,122,443	5,610,559

Annexure K**Number of Learner Driving Licences Issued**

Apr 2005	Number of Learners Licences Issued per Province									
Category	GA	KZ	WC	EC	FS	MP	NW	LI	NC	RSA
1	12,877	2,721	6,366	2,338	2,308	1,904	1,746	935	730	31,925
2	110,292	57,100	73,666	46,914	18,048	13,309	22,675	8,084	6,635	356,723
3	162,132	84,095	36,908	24,612	34,553	31,459	50,633	62,857	10,984	498,233
Total	285,301	143,916	116,940	73,864	54,909	46,672	75,054	71,876	18,349	886,881
Apr 2006	Number of Learners Licences Issued per Province									
Category	GA	KZ	WC	EC	FS	MP	NW	LI	NC	RSA
1	16,202	1,075	3,101	2,925	2,800	2,150	7,487	972	2,074	38,786
2	107,795	7,910	53,449	47,464	17,628	12,466	70,203	6,739	19,999	343,653
3	202,239	69,801	104,046	35,753	40,079	39,362	40,372	13,108	55,794	600,554
Total	326,236	78,786	160,596	86,142	60,507	53,978	118,062	20,819	77,867	982,993
Change	Number of Learners Licences Issued per Province									
Category	GA	KZ	WC	EC	FS	MP	NW	LI	NC	RSA
1	3,325	-1,646	-3,265	587	492	246	5,741	37	1,344	6,861
2	-2,497	-49,190	-20,217	550	-420	-843	47,528	-1,345	13,364	-13,070
3	40,107	-14,294	67,138	11,141	5,526	7,903	-10,261	-49,749	44,810	102,321
Total	40,935	-65,130	43,656	12,278	5,598	7,306	43,008	-51,057	59,518	96,112
% Change	Number of Learners Licences Issued per Province									
Category	GA	KZ	WC	EC	FS	MP	NW	LI	NC	RSA
1	25.82	-60.49	-51.29	25.11	21.32	12.92	328.81	3.96	184.11	21.49
2	-2.26	-86.15	-27.44	1.17	-2.33	-6.33	209.61	-16.64	201.42	-3.66
3	24.74	-17.00	181.91	45.27	15.99	25.12	-20.27	-79.15	407.96	20.54
Total	14.35	-45.26	37.33	16.62	10.20	15.65	57.30	-71.03	324.37	10.84

Category 1 : Motorcycle

Category 2 : Light Motor Vehicle

Category 3 : Heavy Motor Vehicle

Annexure L

Number of Driving Licences Issued

Apr 2005										
Number of Driving Licences Issued per Province										
Category	GA	KZ	WC	EC	FS	MP	NW	LI	NC	RSA
A1	44,860	12,754	22,741	8,600	9,570	7,054	6,825	3,636	2,208	118,248
A	142,980	51,315	75,595	29,010	24,052	20,353	18,046	11,577	7,958	380,886
B	324,164	206,969	197,470	81,487	57,175	47,496	61,080	27,371	19,370	1,022,582
EB	1,331,251	581,824	729,229	302,623	178,850	165,385	147,033	97,833	63,728	3,597,756
C1	238,587	112,456	44,096	24,787	40,914	48,029	56,274	129,250	14,940	709,333
EC1	245,058	71,009	52,654	44,303	37,521	56,055	38,299	56,718	10,177	611,794
C	1,952	3,766	1,824	352	258	402	1,525	1,060	235	11,374
EC	270,391	131,491	102,451	57,218	68,228	82,398	50,970	69,400	21,136	853,683
Total	2,599,243	1,171,584	1,226,060	548,380	416,568	427,172	380,052	396,845	139,752	7,305,656
Apr 2006										
Number of Driving Licences Issued per Province										
Category	GA	KZ	WC	EC	FS	MP	NW	LI	NC	RSA
A1	45,197	12,778	23,311	8,723	9,435	3,616	6,868	7,056	2,196	119,180
A	144,902	51,968	77,343	29,492	24,125	11,628	18,210	20,522	7,999	386,189
B	375,368	227,355	222,990	93,197	63,514	30,319	66,737	52,871	21,550	1,153,901
EB	1,332,097	580,852	734,437	303,587	177,811	98,178	147,597	164,972	63,390	3,602,921
C1	296,673	140,758	53,937	31,416	48,698	149,947	67,036	59,151	17,347	864,963
EC1	243,970	71,006	52,595	44,453	37,196	57,001	38,870	55,759	10,185	611,035
C	2,173	3,939	1,971	421	278	1,090	1,521	438	247	12,078
EC	270,747	132,717	103,036	57,923	68,504	69,796	51,507	82,797	21,223	858,250
Total	2,711,127	1,221,373	1,269,620	569,212	429,561	421,575	398,346	443,566	144,137	7,608,517
Change										
Number of Driving Licences Issued per Province										
Category	GA	KZ	WC	EC	FS	MP	NW	LI	NC	RSA
A1	337	24	570	123	-135	-3,438	43	3,420	-12	932
A	1,922	653	1,748	482	73	-8,725	164	8,945	41	5,303
B	51,204	20,386	25,520	11,710	6,339	-17,177	5,657	25,500	2,180	131,319
EB	846	-972	5,208	964	-1,039	-67,207	564	67,139	-338	5,165
C1	58,086	28,302	9,841	6,629	7,784	101,918	10,762	-70,099	2,407	155,630
EC1	-1,088	-3	-59	150	-325	946	571	-959	8	-759
C	221	173	147	69	20	688	-4	-622	12	704
EC	356	1,226	585	705	276	-12,602	537	13,397	87	4,567
Total	111,884	49,789	43,560	20,832	12,993	-5,597	18,294	46,721	4,385	302,861
% Change										
Number of Driving Licences Issued per Province										
Category	GA	KZ	WC	EC	FS	MP	NW	LI	NC	RSA
A1	0.75	0.19	2.51	1.43	-1.41	-48.74	0.63	94.06	-0.54	0.79
A	1.34	1.27	2.31	1.66	0.30	-42.87	0.91	77.27	0.52	1.39
B	15.80	9.85	12.92	14.37	11.09	-36.17	9.26	93.16	11.25	12.84
EB	0.06	-0.17	0.71	0.32	-0.58	-40.64	0.38	68.63	-0.53	0.14
C1	24.35	25.17	22.32	26.74	19.03	212.20	19.12	-54.24	16.11	21.94
EC1	-0.44	-0.00	-0.11	0.34	-0.87	1.69	1.49	-1.69	0.08	-0.12
C	11.32	4.59	8.06	19.60	7.75	171.14	-0.26	-58.68	5.11	6.19
EC	0.13	0.93	0.57	1.23	0.40	-15.29	1.05	19.30	0.41	0.53
Total	4.30	4.25	3.55	3.80	3.12	-1.31	4.81	11.77	3.14	4.15

A	Motorcycle > 125 cub.cm	A1	Motorcycle < 125 cub.cm	B	Motor vehicle < 3,5000 kg
C	Motorvehicle > 16,000 kg	C1	Motor vehicle 3,500 – 16,000 kg	EB	Articulated motor vehicle <16,000 kg
		EC	Articulated vehicle > 16,000 kg	EC1	Articulated vehicle 3,500 – 16,000 kg

Annexure M

Number of Professional Driving Permits (PrDP's) Issued

Apr 2005										
Number of Professional Driving Permits (PrDP's) Issued per Province										
Category	GA	KZ	WC	EC	FS	MP	NW	LI	NC	RSA
G	1,502	1,442	1,870	575	749	1,102	775	710	520	9,245
P	618	195	3,609	325	310	200	247	112	98	5,714
P G	155,250	63,540	68,249	35,050	34,007	41,735	32,246	41,116	13,621	484,814
D G	92	41	391	22	110	79	45	18	24	822
D P G	24,211	36,391	11,011	9,914	8,343	10,177	5,522	7,384	1,213	114,166
Total	181,673	101,609	85,130	45,886	43,519	53,293	38,835	49,340	15,476	614,761
Apr 2006										
Number of Professional Driving Permits (PrDP's) Issued per Province										
Category	GA	KZ	WC	EC	FS	MP	NW	LI	NC	RSA
G	1,516	1,833	1,891	680	751	711	630	1,149	560	9,721
P	599	166	3,576	240	383	106	204	274	116	5,664
P G	162,455	63,052	68,854	36,780	35,276	46,485	35,343	42,974	14,209	505,428
D G	128	62	533	26	121	36	33	113	26	1,078
D P G	20,714	43,720	12,633	11,419	8,031	6,105	3,528	10,672	1,199	118,021
Total	185,412	108,833	87,487	49,145	44,562	53,443	39,738	55,182	16,110	639,912
Change										
Number of Professional Driving Permits (PrDP's) Issued per Province										
Category	GA	KZ	WC	EC	FS	MP	NW	LI	NC	RSA
G	14	391	21	105	2	-391	-145	439	40	476
P	-19	-29	-33	-85	73	-94	-43	162	18	-50
P G	7,205	-488	605	1,730	1,269	4,750	3,097	1,858	588	20,614
D G	36	21	142	4	11	-43	-12	95	2	256
D P G	-3,497	7,329	1,622	1,505	-312	-4,072	-1,994	3,288	-14	3,855
Total	3,739	7,224	2,357	3,259	1,043	150	903	5,842	634	25,151
% Change										
Number of Professional Driving Permits (PrDP's) Issued per Province										
Category	GA	KZ	WC	EC	FS	MP	NW	LI	NC	RSA
G	0.93	27.12	1.12	18.26	0.27	-35.48	-18.71	61.83	7.69	5.15
P	-3.07	-14.87	-0.91	-26.15	23.55	-47.00	-17.41	144.64	18.37	-0.88
P G	4.64	-0.77	0.89	4.94	3.73	11.38	9.60	4.52	4.32	4.25
D G	39.13	51.22	36.32	18.18	10.00	-54.43	-26.67	527.78	8.33	31.14
D P G	-14.44	20.14	14.73	15.18	-3.74	-40.01	-36.11	44.53	-1.15	3.38
Total	2.06	7.11	2.77	7.10	2.40	0.28	2.33	11.84	4.10	4.09

G : Goods

P : Passengers

D : Dangerous goods

Annexure N

Number of Fatal Crashes & Fatalities : First 4 Months 2003

Number of Fatal Crashes and Fatalities : First 4 Months 2003											
2003	GA	KZ	WC	EC	FS	MP	NW	LI	NC	RSA	
Jan	Crashes	133	142	83	69	39	56	62	53	20	657
	Fatalities										
	Driver	43	36	30	25	17	21	20	20	10	222
	Passenger	39	60	43	30	27	28	36	31	7	301
	Pedestrian	75	79	34	33	12	21	34	17	7	312
	Total	157	175	107	88	56	69	90	68	24	834
Feb	Crashes	158	125	83	59	46	71	64	53	23	682
	Fatalities										
	Driver	46	34	29	13	21	26	16	16	12	214
	Passenger	31	68	13	22	17	27	17	18	8	220
	Pedestrian	95	63	44	34	20	28	37	23	7	351
	Total	172	164	87	69	58	81	70	57	26	785
Mch	Crashes	215	188	118	86	74	80	78	86	23	948
	Fatalities										
	Driver	74	44	20	26	27	25	26	28	11	280
	Passenger	55	36	31	40	28	36	31	36	15	307
	Pedestrian	114	125	79	45	40	32	38	37	6	517
	Total	243	205	130	111	95	94	95	101	32	1,104
Apr	Crashes	181	179	92	82	55	83	75	69	20	836
	Fatalities										
	Driver	49	35	26	23	23	22	23	27	11	240
	Passenger	35	70	26	43	23	36	27	36	11	307
	Pedestrian	120	120	60	44	21	41	37	29	5	475
	Total	203	225	112	109	67	99	87	92	27	1,022
TOT	Crashes	687	634	376	296	214	290	279	261	86	3,123
	Fatalities										
	Driver	213	148	106	87	87	94	85	91	44	955
	Passenger	160	233	113	134	95	128	111	120	41	1,135
	Pedestrian	403	387	217	156	93	122	146	106	25	1,655
	Total	776	769	436	377	275	343	342	318	109	3,745

Annexure O

Number of Fatal Crashes & Fatalities : First 4 Months 2004

Number of Fatal Crashes and Fatalities : First 4 Months 2004											
2004	GA	KZ	WC	EC	FS	MP	NW	LI	NC	RSA	
Jan	Crashes	146	139	83	67	56	69	68	58	21	707
	Fatalities										
	Driver	48	37	24	19	21	22	18	21	8	218
	Passenger	37	76	37	45	46	53	26	21	4	345
	Pedestrian	76	67	46	27	17	24	39	28	9	334
	Total	160	180	107	91	85	100	83	69	21	897
Feb	Crashes	149	153	89	66	40	59	58	61	23	698
	Fatalities										
	Driver	44	47	25	14	21	21	19	22	11	223
	Passenger	49	57	23	24	12	42	15	17	8	247
	Pedestrian	78	81	48	39	15	24	32	28	7	351
	Total	172	184	95	76	47	87	66	67	26	820
Mch	Crashes	187	170	85	69	70	78	58	58	26	801
	Fatalities										
	Driver	65	38	29	24	27	32	18	21	11	266
	Passenger	41	54	23	23	36	25	21	26	31	280
	Pedestrian	102	104	41	35	33	33	28	24	8	407
	Total	208	196	93	81	96	90	67	71	51	953
Apr	Crashes	196	203	109	70	67	75	74	82	23	899
	Fatalities										
	Driver	78	42	35	31	29	24	33	24	12	306
	Passenger	46	44	22	32	36	36	18	21	10	266
	Pedestrian	103	137	58	32	19	32	33	45	8	466
	Total	227	222	115	94	84	93	84	90	29	1,039
TOT	Crashes	678	665	366	272	233	281	258	259	93	3,105
	Fatalities										
	Driver	234	163	112	87	99	99	88	87	42	1,012
	Passenger	174	231	105	123	130	156	80	85	54	1,138
	Pedestrian	359	388	193	132	83	114	132	124	32	1,558
	Total	768	783	410	343	312	369	300	297	127	3,709

Annexure P

Number of Fatal Crashes & Fatalities : First 4 Months 2005

Number of Fatal Crashes and Fatalities : First 4 Months 2005											
2005		GA	KZ	WC	EC	FS	MP	NW	LI	NC	RSA
Jan	Crashes	160	144	89	78	54	68	58	62	26	739
	Fatalities										
	Driver	58	32	36	23	30	33	22	21	11	265
	Passenger	37	41	38	33	32	41	38	41	13	315
	Pedestrian	84	88	36	44	18	23	26	23	8	350
	Total	179	161	110	100	80	97	86	85	31	930
Feb	Crashes	192	174	91	55	65	75	61	55	19	787
	Fatalities										
	Driver	64	52	37	18	24	32	25	14	11	278
	Passenger	41	29	30	30	20	52	17	24	6	249
	Pedestrian	110	104	44	25	28	33	29	25	5	404
	Total	215	185	111	73	73	118	72	63	21	931
Mch	Crashes	235	197	128	102	64	83	66	81	24	980
	Fatalities										
	Driver	83	35	41	28	34	30	25	31	7	313
	Passenger	53	56	46	44	32	40	17	46	25	359
	Pedestrian	125	129	64	46	17	35	33	29	8	487
	Total	261	221	151	118	83	105	74	106	40	1,159
Apr	Crashes	219	212	123	96	70	89	62	84	20	975
	Fatalities										
	Driver	61	59	43	32	46	23	24	35	5	329
	Passenger	76	63	34	41	26	42	20	46	5	353
	Pedestrian	133	128	63	45	24	53	25	34	11	516
	Total	270	250	141	117	96	118	69	115	22	1,198
TOT	Crashes	806	727	431	331	253	315	247	282	89	3,481
	Fatalities										
	Driver	266	177	158	101	134	118	96	101	34	1,185
	Passenger	206	191	148	148	111	175	92	156	50	1,277
	Pedestrian	452	449	207	161	87	144	113	111	31	1,756
	Total	924	817	513	409	333	437	301	368	115	4,218

Annexure Q

Number of Fatal Crashes & Fatalities : First 4 Months 2006

Number of Fatal Crashes and Fatalities : First 4 Months 2006											
2006		GA	KZ	WC	EC	FS	MP	NW	LI	NC	RSA
Jan	Crashes	163	139	95	86	45	66	54	56	19	723
	Fatalities										
	Driver	73	31	46	22	23	21	21	29	9	274
	Passenger	49	60	20	38	35	37	21	13	13	286
	Pedestrian	67	76	46	42	7	23	23	24	4	311
	Total	189	166	112	102	64	82	66	66	25	872
Feb	Crashes	201	152	81	96	54	78	59	69	24	814
	Fatalities										
	Driver	70	34	42	16	27	39	30	17	6	280
	Passenger	63	56	22	47	50	48	16	47	9	359
	Pedestrian	97	93	31	54	19	25	30	33	11	392
	Total	229	184	95	116	96	112	75	97	26	1,031
Mch	Crashes	243	195	113	103	57	100	80	82	18	991
	Fatalities										
	Driver	90	50	44	23	31	37	28	21	8	332
	Passenger	60	69	66	54	26	65	45	56	13	455
	Pedestrian	132	107	50	52	13	40	39	34	5	471
	Total	281	226	160	129	70	142	112	111	26	1,258
Apr	Crashes	199	232	105	97	75	103	101	108	20	1,040
	Fatalities										
	Driver	67	56	45	22	35	43	51	43	8	368
	Passenger	85	98	35	38	48	98	37	59	19	516
	Pedestrian	116	130	48	61	21	36	37	37	6	492
	Total	268	284	128	120	104	177	124	139	33	1,377
TOT	Crashes	806	718	394	382	231	347	294	315	81	3,568
	Fatalities										
	Driver	300	172	177	82	115	140	129	110	30	1,254
	Passenger	256	284	144	177	159	249	119	174	54	1,616
	Pedestrian	412	405	174	208	61	124	128	129	26	1,667
	Total	967	861	494	467	335	513	377	413	109	4,537